

NEVER COMPROMISE DESIGN OR QUALITY.. CHOOSE ALUFLAM !

Greetings!

Have you found a company that provides product without sacrificing design or quality in your construction?

Over the years, Aluflam has shown its leadership in fire rated glazing systems comprised of aluminum and glass structures. The secret?

Aluflam develops, manufactures, pre-tests a wide variety of quality fire-resistant products in its own factories. The many years of experience from conceptualization stage to development of passive fire-resistant doors and windows to production of new solutions through intensive research and knowledge acquisition of Aluflam experts, Aluflam has proven its drive to promote safety in building constructions as well as in marine and offshore industries.

Aluflam has its own extrusion and painting lines which make its technology more effective and sustainable from production of profiles to delivery of finished products, in one factory. Recyclable materials and use of renewable energy in factories such as solar system, is also a must for Aluflam.

So why look for another? Choose ALUFLAM !

ALUFLAM PORTFOLIO



CONTENTS

1. Introduction
2. Vision and Mission
3. Catalogues
4. Technical Specification
5. Technical Drawings
6. Hardwares and Accessories
7. Certificates and Testings
8. Project References



INTRODUCTION

Aluflam is a danish family-owned company established in 1943 with head office in Roskilde, Denmark. Product demands lead the expansion with locally producing subsidiaries in Lithuania (2001), USA (2006) & Australia (2021). Aluflam has more than 200 employees distributed in different factories and offices. Aluflam products offer a wide variety of fire-rated glazing systems in Aluminium structures. These quality products were developed and extensively tested by leading fire-resistance rating Institutions to conform European and UL Standards. Aluflam manufacture products with fire rating and classification from E30 to EI120 to be used for interior or exterior walls in buildings, airports, schools, hospitals, hotels, marine platforms, ships, etc.

Main Activities:

1. Manufacture of Fire Rated products for Buildings
2. Manufacture of Fire Rated products for Marine/Offshore
3. Extrusion of Aluminium and Powder coating
4. Research, Development and Testing of Fire Rated Systems



VISION AND MISSION

Aluflam Vision:

Aluflam envisions to produce, develop and design more quality fire rated construction products for safety and security of mankind and properties for both land and sea.

Aluflam Mission:

Aluflam commits to create and promote safety, security and sustainability through design and development of passive fire-resistant structures in Aluminium and glass.

Aluflam seeks to deliver world class products and services through extensive researches, testing and development.



CATALOGUES

(see attachment)



TECHNICAL SPECIFICATION

ALUFLAM doors and windows
tested according the EN standards

EN 1364-1: Non-load bearing walls

EN 1634-1: Fire resistance tests for door and shutter assemblies
Part 1: **Fire doors and shutters**

EN 1634-2: Fire resistance tests for door and shutter assemblies
Part 2 : **Fire door hardware**

EN 1634-3: Fire resistance tests for door and shutter assemblies
Part 3: **Smoke control doors and shutters**

Classification of the fire resistance on elements of building construction:

EN 13501-2: Fire classification of construction products and building elements
Part 2: Classification using data from fire resistance tests,
excluding ventilation services;



Picture 8: The specimen at 2300 minutes of the test.

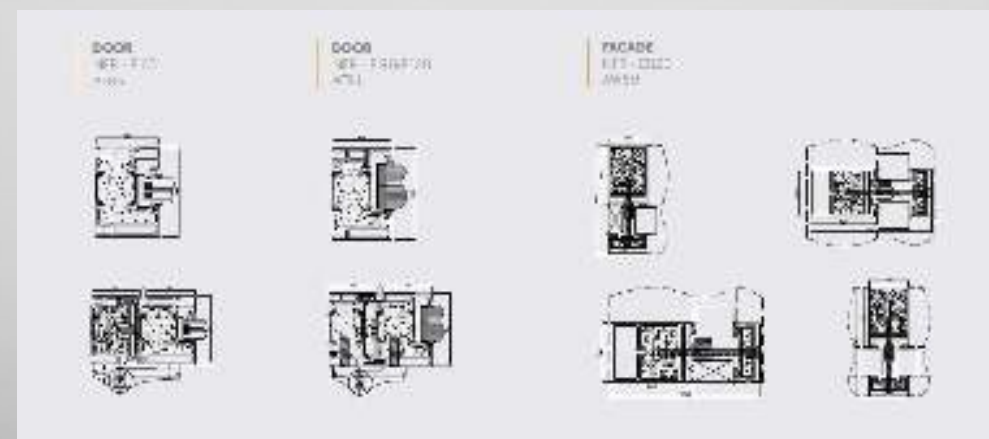
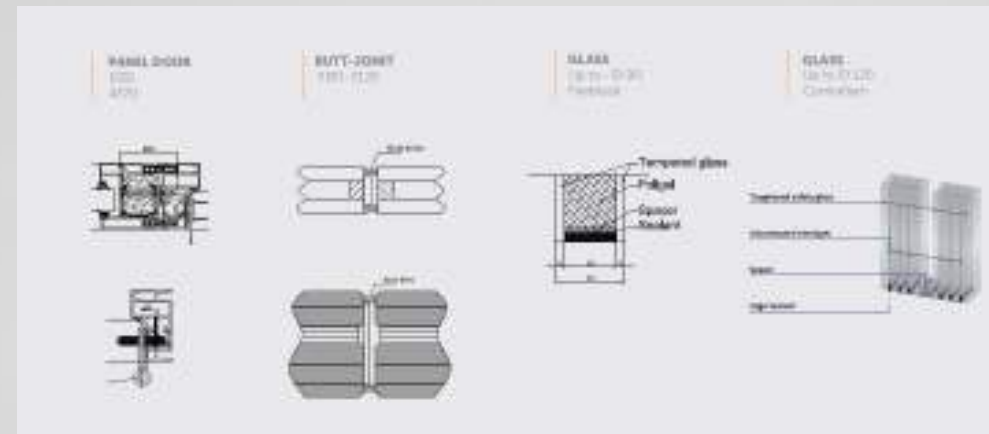


Picture 7: Specimen at 1200 minutes.



TECHNICAL SPECIFICATION

ALUFLAM doors and windows tested according the EN standards



(see attachment)

The image displays the ALUFLAM system components and their assembly. It includes a perspective view of the window frame and six detailed cross-sections illustrating the internal structure and sealing mechanisms.

- Section 1:** Shows the top profile with a drainage channel and a sealant.
- Section 2:** Shows the side profile with a drainage channel and a sealant.
- Section 3:** Shows the bottom profile with a drainage channel and a sealant.
- Section 4:** Shows the side profile with a drainage channel and a sealant.
- Section 5:** Shows the top profile with a drainage channel and a sealant.
- Section 6:** Shows the bottom profile with a drainage channel and a sealant.



ALUFLAM FACADE STRUCTURES

Aluflam facade structures is constructed of vertical aluminium profiles with a cavity flow and protected fire-retardant insulating wool. Available in the range of 200mm to 300mm with up to 120 mm depth including the cladding. Profiles are fully capable to support a 100kg/m² permanent and 100mm snow.

Aluflam Aluflam® system can be retrofitted to existing walls up to 120 mm.

- Aluflam system is made of aluminium with 2.5 mm thick 2.01 mm plate
- Aluflam can be insulated with up to 120 mm
- Aluflam can be finished with up to 120 mm
- Aluflam can be finished with up to 120 mm
- Aluminium profiles can be used in any position
- Aluflam can be used in any position
- Aluflam can be used in any position



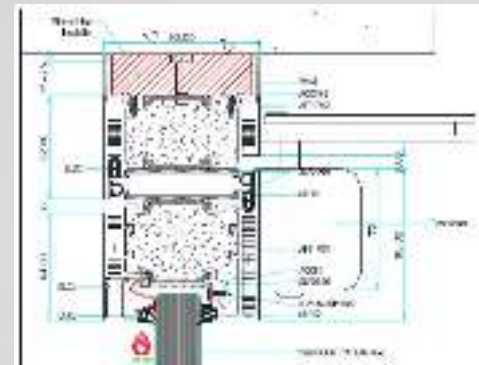
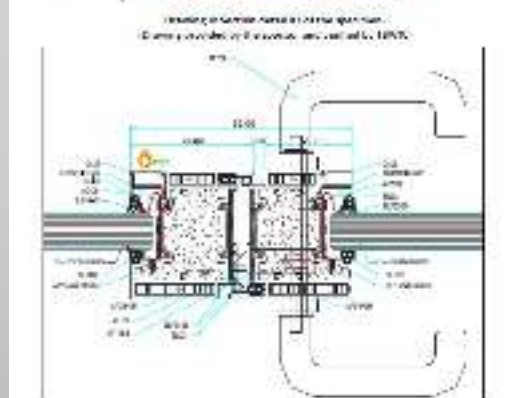
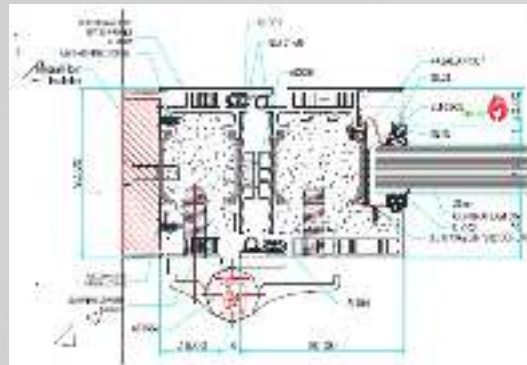
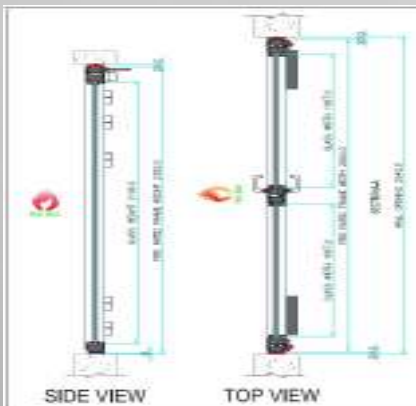
TECHNICAL SPECIFICATIONS

Material	Aluminium 2.01 mm plate
Thickness	2.01 mm
Finish	Aluminium
Insulation	Up to 120 mm
Weight	Up to 120 kg/m²
Load capacity	Up to 120 kg/m²
Fire rating	Up to 120 mm
Sound insulation	Up to 120 mm
Wind resistance	Up to 120 mm



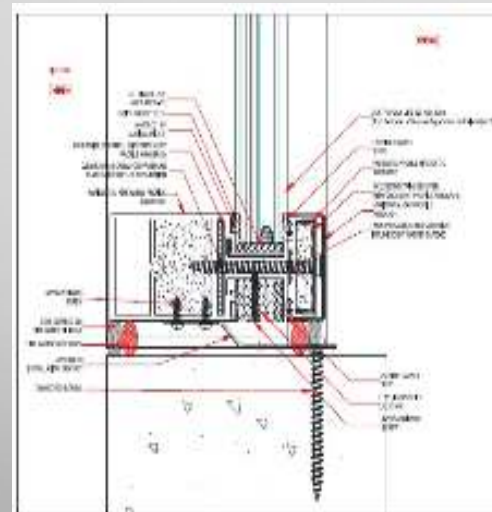
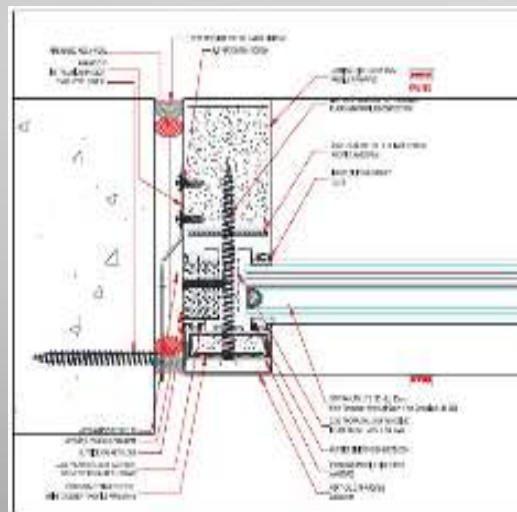
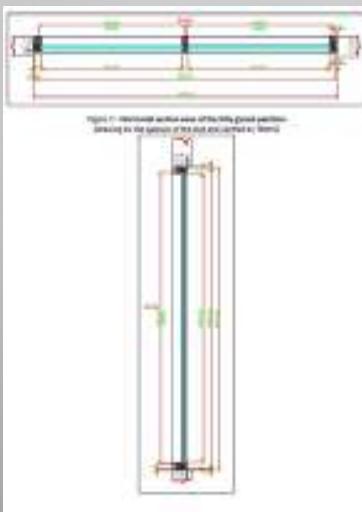
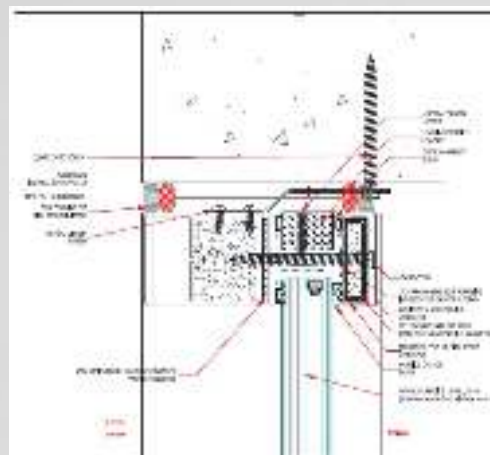
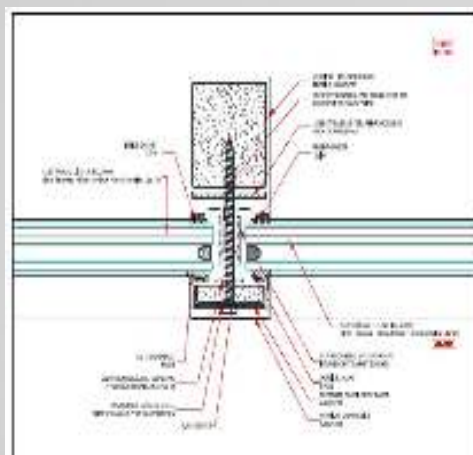
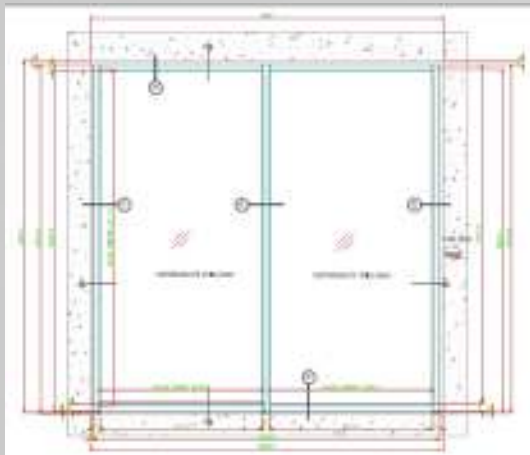
TECHNICAL DRAWINGS

AF91 door system drawing



TECHNICAL DRAWINGS

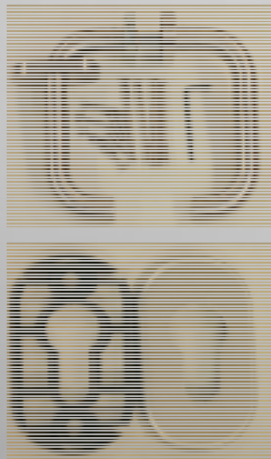
AW60 CW system drawing



TECHNICAL HARDWARES AND ACCESSORIES

Handles

Stainless steel lever handles for narrow profiles and matching design escutcheon. In general, ALL CE marked lock sets tested for the fire resistance with backset 30-35mm can be used in ALUFLAM systems without additional testing.



Lock

Standard lock for ALUFLAM doors: BKS1828 lock with the stainless front plate, 35mm backset. However, 30mm backset can also be used if needed



Hinges

Standard hinges for ALUFLAM doors: Dr. Hahn Turband 4 65mm to 83mm hinges with various surface coatings, usually painted same colour as the doors. Minimum 3 pieces for each door leaf & can install up to 5 pieces per door leaf. Cylindrical hinges can be used as well.



Passive Vent Flush Bolts

Standard manual passive vent flush bolt for ALUFLAM doors: ASSA 96, ASSA 1396, semi-automatic ASSA 2396.



CERTIFICATES AND TESTINGS

AW60 CW system

intertek
Test Quality Assured

Certificate of Compliance

You have been awarded:
WH Service Mark 2014 for Category D - Doorframe Assemblies
Standard: EN 14001:2015

Certificate number: WH026-2014-1001

Organisation: ALUFLAM AG
Langebergweg 11
Reutlingen 72636
Germany

Product: ALUFLAM - WST fully glazed movable wall sliding system
ALUFLAM - WST 1004-1 - 1004-10
Jan 10 2015
Via Email - 1 hour following
issue of certificate (see below paragraph)

Certification body: Intertek Testing Services NA, Inc.
Initial registration: November 03, 2010
Date of expiry: November 31, 2020
Issue status: 2

Authorised by:
Juan Philippe Kay, Director of Certification

Intertek Testing Services NA, Inc.
3010 Alameda Road, Suite 1400, Sparks, Nevada 89411
Phone: 800-451-2857 Fax: 775-345-1500

intertek
Test Quality Assured

Certificate of Compliance

You have been awarded:
WH Service Mark 2014 for Partition
Standard: EN 12841:2015

Certificate number: WH025-2014-0008

Organisation: ALUFLAM AG
Langebergweg 11
Reutlingen 72636
Germany

Product: ALUFLAM - ALUW Non-insulating Fully Glazed Fixed Partition - EN 12841-1 - EN 12841-10
Jan 10 2015
Via Email - 1 hour following
issue of certificate (see below paragraph)

Certification body: Intertek Testing Services NA, Inc.
Initial registration: November 03, 2010
Date of expiry: November 31, 2020
Issue status: 2

Authorised by:
Juan Philippe Kay, Director of Certification

Intertek Testing Services NA, Inc.
3010 Alameda Road, Suite 1400, Sparks, Nevada 89411
Phone: 800-451-2857 Fax: 775-345-1500

intertek
Test Quality Assured

Certificate of Compliance

You have been awarded:
WH Service Mark 2014 for Partition
Standard: EN 12841:2015

Certificate number: WH026-2014-1002

Organisation: ALUFLAM AG
Langebergweg 11
Reutlingen 72636
Germany

Product: ALUFLAM - ALUW Non-insulating Fully Glazed Fixed Partition - EN 12841-1 - EN 12841-10
Jan 10 2015
Via Email - 1 hour following
issue of certificate (see below paragraph)

Certification body: Intertek Testing Services NA, Inc.
Initial registration: November 03, 2010
Date of expiry: November 31, 2020
Issue status: 2

Authorised by:
Juan Philippe Kay, Director of Certification

Intertek Testing Services NA, Inc.
3010 Alameda Road, Suite 1400, Sparks, Nevada 89411
Phone: 800-451-2857 Fax: 775-345-1500

intertek
Test Quality Assured

Certificate of Compliance

You have been awarded:
WH Service Mark 2014 for Partition
Standard: EN 12841:2015

Certificate number: WH026-2014-1004

Organisation: ALUFLAM AG
Langebergweg 11
Reutlingen 72636
Germany

Product: ALUFLAM - ALUW Non-insulating Fully Glazed Fixed Partition - EN 12841-1 - EN 12841-10
Jan 10 2015
Via Email - 1 hour following
issue of certificate (see below paragraph)

Certification body: Intertek Testing Services NA, Inc.
Initial registration: November 03, 2010
Date of expiry: November 31, 2020
Issue status: 2

Authorised by:
Juan Philippe Kay, Director of Certification

Intertek Testing Services NA, Inc.
3010 Alameda Road, Suite 1400, Sparks, Nevada 89411
Phone: 800-451-2857 Fax: 775-345-1500

CERTIFICATES AND TESTINGS

AF91 door system



CERTIFICATES AND TESTINGS

AF91 window system

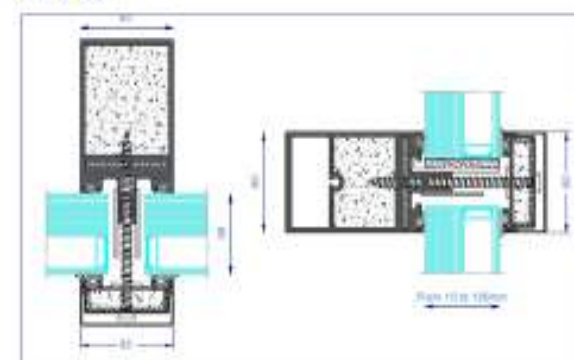


CERTIFICATES AND TESTINGS

AW60 CW system

Type	FR class	Glass type	Tested constr. BxH, mm	Increase	Tested glass size, mm	Sound insulation
GW	EI ₁ 60	CF60/3	3000x3100	+20%	1446x2911	n.a
GW	EI ₁ 120	CF120/5	3000x3010	+20%	1500x2922	n.a
GW	EW120	CFL120	3000x3010	+10%	1446x2911	n.a

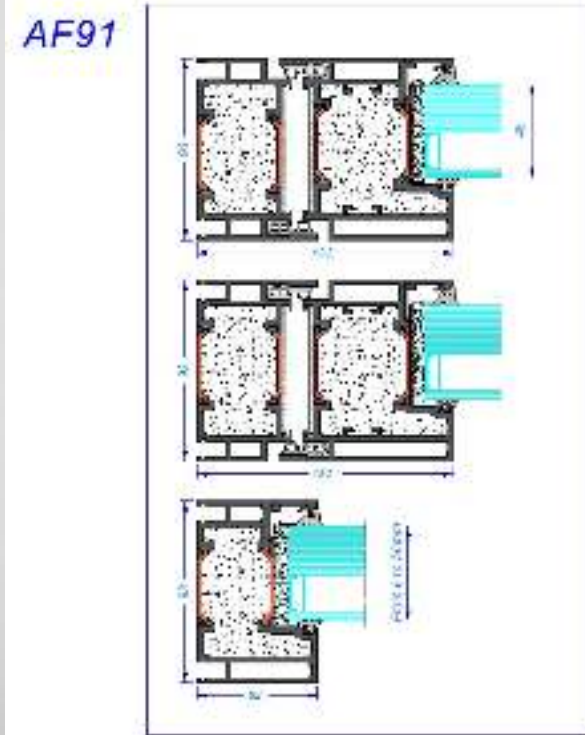
AW60



CERTIFICATES AND TESTINGS

AF91 door and window system

Type	FR class	Glass type	Tested constr. BxH, mm	Increase	Tested glass size, mm	Sound insulation
SD	E _i 60	CF60/3	1200x2300	+20%	965x2100	n.a
DD	E _i 60	CF60/3	2500x2300	+20%	1067x2100	n.a
SD	E _i 90	CF60/3	1200x2300	+20%	965x2100	n.a
DD	E _i 90	CF60/3	2500x2300	+20%	1067x2100	n.a
DD	EW120	CFL120	2500x2300	+20%	1067x2100	n.a
SDD	E _i 60	CF60/3	2200x2200	+20%	1046x2124	n.a



PROJECT REFERENCES

**ALUFLAM ALUMINIUM FRAMED FIRE RATED GLAZING
INTEGRITY & INSULATION**

Constructed from thermally insulated extruded aluminium subframes and filled with a proprietary fire blocking material, our aluminium door and curtain wall systems are available in 60, 90 and 120 minute ratings for internal installations with Fiberglas Pyroshield Heatwood Integrity & Insulation (TI) Glass.

EW 120 CURTAIN WALL

Aluminium	Extruded Alloys
Door	14 mm Fiberglas Pyroshield TI 120
Rating	120 mins Integrity & Insulation
Related Standards	EN 1366-1
Related Date	12 Dec 2014

W 90 SINGLE & DOUBLE DOOR


Aluminium	Extruded Alloys
Door	14 mm Fiberglas Pyroshield TI 90
Rating	90 mins Integrity & Insulation
Related Standards	EN 1366-1
Related Date	12 Dec 2014



MOHAMMED BIN RASHID LIBRARY

A development project in Abu Dhabi, featuring a modern architectural design with a large, cantilevered upper floor. The library is constructed using Alufлам aluminium framed fire-rated glazing systems, ensuring integrity and insulation.

Product Integrity & Insulation (PFI) 120, PFI 90, PFI 60
Extruded Aluminium Framing System
Extruded Alloys
Extruded Glass

**ALUFLAM ALUMINIUM FRAMED FIRE RATED GLAZING
INTEGRITY & INSULATION**

Constructed from thermally insulated extruded aluminium subframes and filled with a proprietary fire blocking material, our aluminium door and curtain wall systems are available in 60, 90 and 120 minute ratings for internal installations with Fiberglas Pyroshield Heatwood Integrity & Insulation (TI) Glass.

EW 120 CURTAIN WALL

Aluminium	Extruded Alloys
Door	14 mm Fiberglas Pyroshield TI 120
Rating	120 mins Integrity & Insulation
Related Standards	EN 1366-1
Related Date	12 Dec 2014

EN 120 SINGLE & DOUBLE DOOR

Aluminium	Extruded Alloys
Door	14 mm Fiberglas Pyroshield TI 120
Rating	120 mins Integrity & Insulation
Related Standards	EN 1366-1
Related Date	12 Dec 2014



DEIRA WATER FRONT

A development project in Dubai, featuring a modern architectural design with a large, cantilevered upper floor. The project is constructed using Alufлам aluminium framed fire-rated glazing systems, ensuring integrity and insulation.

Product Integrity & Insulation (PFI) 120, PFI 90, PFI 60
Extruded Aluminium Framing System
Extruded Alloys
Extruded Glass




PROJECT REFERENCES

ALUFRAM ALUMINUM FRAMED FIRE RATED GLAZING INTEGRITY & INSULATION

Laminated Glass fire rated between aluminum extrusions and fixed with a proprietary fire retaining material and a stainless steel, and carbon steel system are available in 60, 90 and 120 minute ratings for interior installations with integrity, fire integrity & insulation (IIF) Glass.

IIF IN CURTAINWALL

Extrusion:	Aluflex 4000
Glass:	60 mm Pilkington Pyrosec 60 IIF
Fixing:	60 mm Integrity & Insulation
System Tested:	EN 1366-1
System Date:	01 May 2015

IIF IN SHORE & DECK DOOR

Extrusion:	Aluflex 4000
Glass:	60 mm Pilkington Pyrosec 60 IIF
Fixing:	60 mm Integrity & Insulation
System Standard:	EN 1366-1
System Date:	01 May 2015






TARA HOTEL – THE PALM

This is a luxury residential project with over 1000 high-end 1 and 2 bedroom housing over 400 apartments on the island of Palm Jumeirah.

The project is made up with towers of four 15-story towers covering a 115,000 sqm plot and 1100 luxury serviced apartments. The hotel is also called "Elegant Palm Jumeirah". The hotel will be located with an entertainment facilities including a shopping mall and beach, a golf and water-skiing, golf plus a range of other services with a wide selection of restaurants.

Project: TARA HOTEL THE PALM
Contract: Top-selling Consultant Consulting Engineer
Contract: Arabian Development LLC
Location: Dubai, UAE





DUBAI CREEK RESIDENCE

Completion of its residential towers will take place within the Dubai Creek Harbour in the newly growing development inside the urban corridor of Dubai. The biggest challenge in this project was the fact that construction while being the city's water channel.

The scope of work was design, fabrication, supply and installation of aluminium and glass facade systems, including curtain walls, storefront windows, aluminium cladding, aluminium canopies, handrails, screens, louvers, and roof structures and systems for ground floor levels.

Project: EPC OW & EPC, O&M OW & EPC
 Consultant: Turner DFE Engineering Consultants
 Contractor: Al Jassbi & Partners LLC
 Location: Dubai, UAE






MASDAR INSTITUTE NEIGHBOURHOOD

Masdar Institute Neighbourhood is a state-of-the-art building and will provide excellent accommodation for Masdar Institute students, as well as provide excellent environment and an office building. Most of the facilities within the building and public services are also part of the state-of-the-art.

Project: T9801760, 500 T9817123 (A, B, C, D, E, F, G, H, I, J, K, L, M, N, O, P, Q, R, S, T, U, V, W, X, Y, Z)
 Project Size: 100,000 sqm
 Completed: 2012
 Commissioned by: Masdar Institute of Science and Technology
 Location: Masdar City, Abu Dhabi, UAE




PROJECT REFERENCES

ALUFLAM ALUMINIUM FRAMED FIRE RATED GLAZING
INTEGRITY & INSULATION

Constructed from thermally treated non-reinforced aluminium extrusion and filled with a proprietary fire blocking material, our aluminium doors and curtain wall systems are available in 60, 90 and 120-minute fire ratings. All systems conform with EN 1634-1 and EN 1634-2 standards.

E.L. 60 CW PARTITION		E.L. 90 MINERAL WOOL JOINT PARTITION	
Aluminium	Alufam 60/90	Aluminium	Alufam 60/90
Size	12.4m x 1.8m (Standard)	Size	12.4m x 1.8m (Standard)
Rating	60 min Integrity & Insulation	Rating	90 min Integrity & Insulation
System Standard	EN 1634-1	System Standard	EN 1634-1
Tested Date	12.10.2018	Tested Date	12.10.2018






SHEIKH KHALIFA CENTRAL HOSPITAL

The Project is located at the eastern edge of the emirate of Fujairah, aligned to the main beach on the coast and adjacent to the highway. With an approximate area of 11,000 sqm, the building is a modern, multi-story structure with a curved facade and a central tower. The building is designed to provide a high level of care and comfort for patients and staff.

Project: Integrity & Insulation (I&I)
System: Aluminium Curtain Wall
Location: Fujairah, UAE




AL KHAIL AVENUE MALL

AL KHAIL AVENUE MALL is a large shopping and entertainment destination located in the heart of Al Khail. The mall features a modern design with a large glass facade and a central atrium. The building is designed to provide a high level of service and comfort for customers and staff.

Project: E.L. 60 CW, E.L. 90 CW, E.L. 120 CW Partitions
System: Aluminium Curtain Wall
Location: Al Khail, UAE





BIG BOX PARK

The project consists of a new 10,000 sqm, a new market of 1,000 sqm and a new 10,000 sqm. The project is located in the heart of the city and is designed to provide a high level of service and comfort for customers and staff.

Project: E.L. 60 CW, E.L. 90 CW, E.L. 120 CW Partitions
System: Aluminium Curtain Wall
Location: Al Khail, UAE




PROJECT REFERENCES

ALUFLAM ALUMINIUM FRAMED FIRE RATED GLAZING
INTEGRITY & INSULATION

Constructed from thermally insulated narrow aluminium extrusions and filled with a proprietary fire-sealing material, our aluminium door and curtain wall systems are available in 60, 90 and 120 minute ratings for interior installations with Pilkington Pyroshield Multi-layered Integrity & Insulation (MII) Glass.

EL 60 & 90 SLIDING DOOR

Aluminium	60/90mm
Glass	27mm Pilkington Pyroshield MII 60 27mm Pilkington Pyroshield MII 90
Rating	60 & 90 mins Integrity & Insulation
System Standard	EN 1364-1
Tested Date	11 Dec 2014





AL KHAIL AVENUE MALL

Al Khail Mall will be a leading retail and entertainment destination ideally located to serve the fast-growing new communities of Jumeirah.

Product: 120 Door, 120 Sliding door, 60 Sliding door
 Consultant: Gaf Al-Harbaleh Consultants
 Contractor: Wael Contracting LLC
 Location: Dubai, UAE






PROJECT REFERENCES



UAE UNIVERSITY IN AL AIN
SYSTEM: AFIS, AWSO
PRODUCTS: DOORS & WINDOWS
OWNER: MUBADALA
CONSULTANT: COX GROUP PTY. LTD.
CONTRACTOR: OGER ABU DHABI
SUB-CONTRACTOR: CLOISALL
CHEMICAL CO / GULF INT. TRAD. GROUP

Aluflam provided the fire rated glazed doors, facade, fixed partitions and windows in order to meet the fire requirement for this prestigious project. Aluflam systems are high end aluminum-glass materials which allows the design and aesthetics in structures without sacrificing the fire performance.



CLEVELAND CLINIC, ABU DHABI
SYSTEM: AFIS
PRODUCTS: DOORS & WINDOWS
FIRE RATING: 45-60 MINUTES
CONTRACTOR: SIXTH CONSTRUCT
SAMSUNG C & T
CONSULTANTS: ARDAS / AECOM
OWNER: MUBADALA

Aluflam provided the UL listed constructions in order to meet the fire requirement for this prestigious project. It is here we provided the fixed windows with blinds between the glasses and at the same time fire rated. Aluflam systems are high end materials which allows the design and aesthetics in structures without sacrificing the fire performance.



AL JISRA FISH MARKET IN SHARJAH
SYSTEM: AF70, AF85, AWSO
PRODUCTS: HINGED SLIDING FLUSHED DOORS, GLASS WALLS, WINDOWS
FIRE RATING: 60 AND 120 MINUTES
CONTRACTOR: SUN ENGINEERING & CO
CONSULTANT: GODWIN AUGUSTIN JOHNSON
OWNER: GOVERNMENT OF SHARJAH

Aluflam provided the doors both in flushed hinged and glazed sliding doors, glass walls and windows in order to meet the fire requirement for this prestigious project. Aluflam systems are high end materials which allows the design and aesthetics in structures without sacrificing the fire performance.



HIGHER COLLEGE OF TECHNOLOGY / WOMEN
SYSTEM: AF70
PRODUCTS: DOORS WITH SIDE PANELS
FIRE RATING: 90 MINUTES
OWNER: EMIRATES REAL ESTATE CORP.
MAIN CONSULTANT: DEWANARCH & ENGINEERS
MEP CONSULTANT: IAN BANHAM & ASSOC.
SUB-CONTRACTOR: GITHI

Aluflam provided the doors and fixed side panels in order to meet the fire requirement for this prestigious project. The constructions were mostly located along the corridors with mechanical closures and pull handles. Aluflam systems are high end materials which allows the design and aesthetics in structures without sacrificing the fire performance.

PROJECT REFERENCES



NEW DOHA INT'L AIRPORT, QATAR
SYSTEM: AFW3
PRODUCTS: CURTAIN WALLS, DOORS
WITH FIXED SIDE & TOP PARTITIONS
CONTRACTOR: CONSOLIDATED
CONTRACTORS GROUP
SUB-CONTRACTOR: TECHNICAL GLASS
PHASES: GEN. AVIATION, OPERATIONS
FACILITIES, MAIN FIRE STATION

Alufam provided the fire rated curtain walls and glazed doors with fixed top and side partitions and also fixed windows in order to meet the fire requirement for this prestigious project. Alufam systems are high end materials which allows the design and aesthetics in structures without sacrificing the fire performance.



SIERA VILLAGE STAFF HOUSING, QATAR
SYSTEM: AFW5
PRODUCTS: DOORS WITH FIXED
SIDE & TOP PARTITIONS
OWNER: SAZAYA QATAR
CONSULTANT: ARAB ENGINEERING
BUREAU
CONTRACTOR: BINOHYDRO
SUB-CONTRACTOR: TSOAC

Alufam provided the fire rated glazed doors with fixed top and side partitions and also fixed windows in order to meet the fire requirement for this prestigious project. Alufam systems are high end materials which allows the design and aesthetics in structures without sacrificing the fire performance.



GATE DEVELOPMENT PROJECT, QATAR
SYSTEM: AFW6
PRODUCTS: FIXED PARTITION
ARCHITECT: M2 & PARTNERS
CONSULTANT: HALDROW YOLLES
SUB-CONTRACTOR: MAN ENTERPRISE
SUB-CONTRACTOR: GTS

Alufam provided the 90 minutes fire rated fixed partitions to meet the E190 fire rating requirement for this prestigious project.

Alufam systems are high end materials which allows the design and aesthetics in structures without sacrificing the fire performance.



**DEVELOPMENT OF MUSCAT AND SALALAH
INT'L AIRPORT**
SYSTEM: AFW6
PRODUCTS: CURTAIN WALLS
CONTRACTOR: SHANFAR ALUMINIUM
COMPANY LLC
SUB-CONTRACTOR: GTS
OWNER: GOVERNMENT OF OMAN

Alufam provided the exterior aluminium and glass fire rated curtain walls to meet the fire requirement for this prestigious project.

Alufam systems are high end materials which allows the design and aesthetics in structures without sacrificing the fire performance.