



ARCHITECTURAL BUILDING SYSTEMS





Contents

Alumil Group	01
Sliding	03
Hinged & Pivot Systems	13
Curtain Wall	21
Partitions	27
Outdoor Products	33
Reference Projects	43



ALUMIL Group

With more than 35 years of experience and 3.200 employees, ALUMIL is one of the world's most advanced companies in the design and production of aluminium architectural systems, owning state-of-the-art production lines in its 12 factories in Southeast Europe and Northern Africa.

ALUMIL produces top-quality aluminium systems, designed and developed in the Group's innovative Research & Development Department and then tested and certified by internationally accredited certification institutes and laboratories, such as ift Rosenheim (Germany), A.A.M.A. (USA), Istituto Giordano (Italy), CSTB (France), ATG (Belgium), EXOVA (United Kingdom) etc.

The high standard industrial facilities and the strong international sales network in over 60 countries and with 30 subsidiaries across the globe, prove that ALUMIL is one of the most renowned suppliers of architectural aluminium systems that meet the highest requirements and cover a wide range of architectural needs:

- / High-end aesthetics in accordance with the latest architectural trends.
- / Energy efficiency through advanced thermally insulated aluminium systems and shading systems.
- / Energy saving through the integration of photovoltaic systems into building cells.
- / High security level against burglaries, vandalism, fire, smoke and earthquakes.
- / Protection even in extreme weather conditions.
- / Various solutions for people with special needs.

Our mission is to improve the quality of people's life by enhancing the performance of their buildings, with products of the highest quality, technology and aesthetics.

Industrial facilities

- | | |
|----|--|
| 11 | aluminium extrusion lines |
| 8 | powder coating lines |
| 3 | sublimation lines (wood effect colors) |
| 3 | anodizing plants |
| 2 | foundries for billet production |
| 8 | thermal break assembly lines |
| 3 | manufacturing plants for system accessories |
| 1 | manufacturing plant for roll-formed aluminium-foam filled profiles |
| 1 | manufacturing plant for polycarbonate sheets |

630.000 m ²	own industrial real estate
230.000 m ²	manufacturing buildings
12	factories
3.200	employees

Production capacity

100.000 t	of aluminium extrusion
75.500 t	of powder coating
80.000 t	of billets
22.000 t	of anodized aluminium
30.500 t	of thermal broke profiles
2.000.000 m ²	polycarbonate sheets

Regional Support

ALUMIL MIDDLE EAST, based in Dubai in the United Arab Emirates, is servicing all project requirements in the Middle East region in terms of:

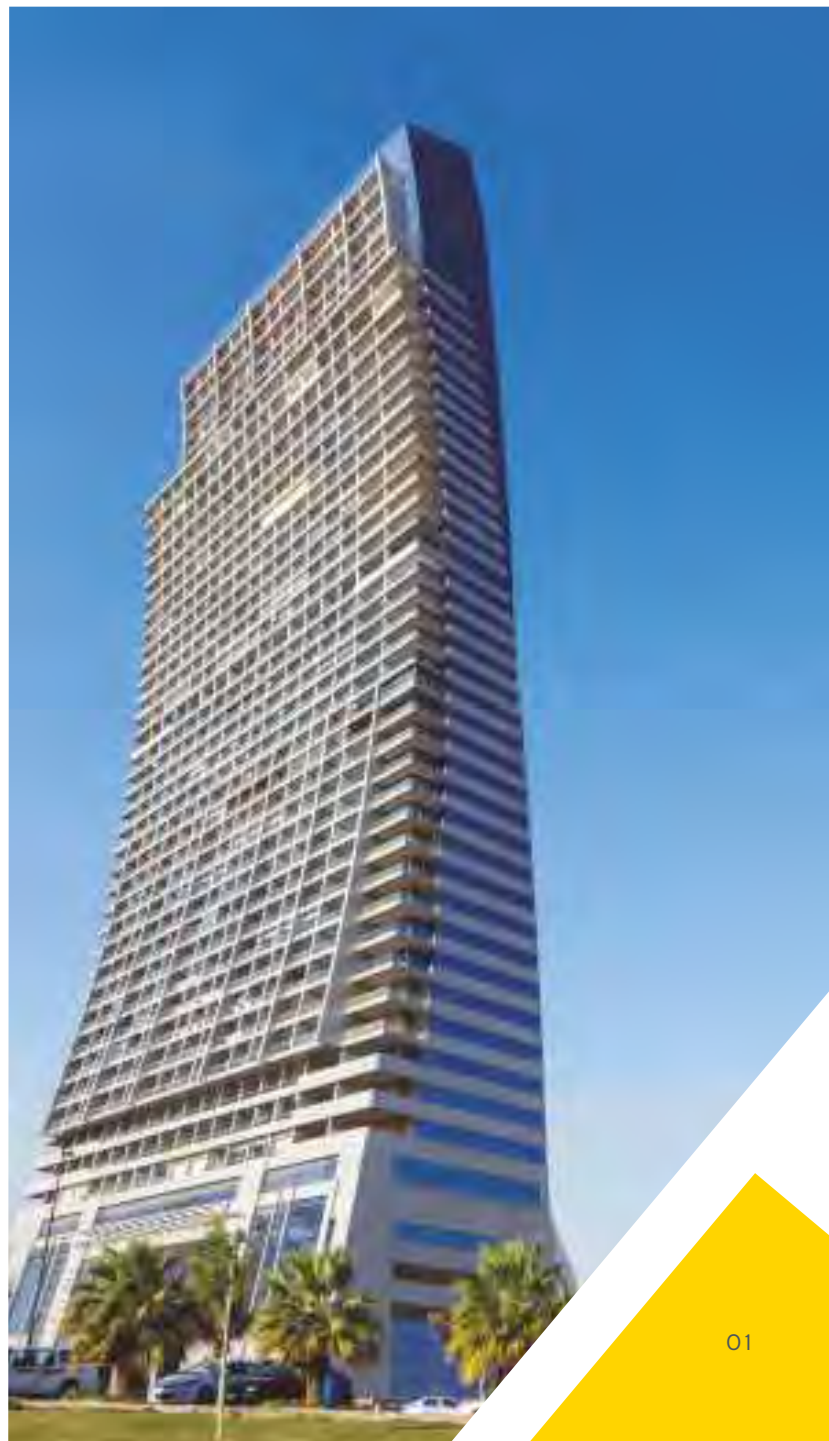
- / Architectural project requirements.
- / ALUMIL SYSTEMS products.
- / Aluminium extrusions/powder coating/anodizing.
- / Technical service & engineering support.
- / Costing estimations.
- / Technical design proposals/submissions.
- / Performance testing.
- / Customized solutions.
- / Training & quality control.
- / Site inspections/reports/warranties.
- / Logistics facilities.
- / Showroom facilities.

Regional References


ALUMIL Systems have been successfully placed in notable & demanding projects through the Middle East, Near East, Africa, India and Asia. **ALUMIL MIDDLE EAST** reference portfolio includes:

- / High rise towers over 50 floors.
- / Highest thermal performance projects such as Estidama Pearl 2.
- / Advanced design projects (minimal visible aluminium systems) for residential towers.
- / Projects with highly specialized products such as folding doors and motorized shading louvres.
- / High performance/budget sensitive commercial towers.
- / Luxury villas and large scale villa projects.

ALUMIL MIDDLE EAST showroom in JLT/Dubai is open for visits from owners/developers, architects, consultants, main contractors and aluminium subcontractors (contact details can be found in the last page).





A photograph of a modern building with a large glass facade and a flat roof. In the foreground, there is a swimming pool and a lounge chair on a wooden deck. A tree is visible near the building. The sky is clear and blue.

For information
on the full range
of ALUMIL SYSTEMS
& products contact us

➤ Sliding systems

SUPREME S700
SUPREME S650 PHOS
SMARTIA S500
SMARTIA M630 PHOS
SMARTIA S600
SMARTIA S560
SMARTIA S440
SMARTIA S350
SMARTIA M1 4600

Alumil > SUPREME S700



The lift & slide system SUPREME S700 represents the evolution of ALUMIL's advanced systems for projects with wide spans and impressive features. SUPREME S700 complies perfectly with the modern trends of "transparent" architecture, combining high thermal insulation, safety and modern design.

Its minimal design along with the state-of-the-art technology make it the ideal solution for projects enhancing natural lighting, satisfying even the most demanding requirements.

- / Basic system's depth 70 mm.
- / Interlocking face width of only 47 mm for maximum visibility and reinforced profiles for door height of more than 3 m.
- / Innovative low threshold for easy access and high performance.
- / Alternative solution for totally concealed in-floor installation, covered with the floor finish (version SUPREME S700 Eclipse).
- / High energy efficiency with special anti-distortion polyamides, for improved performance when there are high temperature differences between indoors and outdoors.
- / Smart water evacuation system that guarantees watertightness under any weather condition.





Alumil SUPREME S650 PHOS



ALUMIL's sliding thermally insulated system SUPREME S650 is the ideal solution for projects requiring wide spans with minimal aluminium site lines. Massive, yet elegant, glazing surfaces are achieved, while maintaining high functionality, performance and minimal architectural design.

The system's main advantage is the improvement of living conditions, by maximizing the natural light and minimizing the visible aluminium face width. Thus, the residents feel closer to the external environment, increasing their sense of freedom.

- / Basic system's depth 62 mm.
- / All the aluminium profiles are totally integrated into the walls, maximizing natural light in the buildings.
- / Only 25 mm visible aluminium face width at the interlocking profile.
- / Extra concealed profiles available for water drainage.
- / Stainless steel rollers for smooth sliding and maximum functionality, with high resistance to corrosion.
- / Availability of 3 alternative solutions for the on-floor, in-floor or totally concealed in-floor installation, covered with the floor finish (version SUPREME S650 ECLIPSE).
- / Supports curved glass applications



Alumil SUPREME S500 PHOS



Discover perfection in ALUMIL's thermally insulated sliding system SUPREME S500 PHOS, where minimalist aesthetics combine with exceptional functionality.

- / Basic system's depth 50 mm.
- / Minimal design with concealed profiles and symmetrically clear lines for maximum natural light.
- / Narrow interlocking profile of only 25 mm face width for an unobstructed view.
- / The Eclipse version features a recessed bottom track covered with the floor finish, creating uniformity in design and providing a flat surface for easy access.
- / The Total Eclipse version offers the ultimate minimal design, with all tracks covered by the ceiling, floor, and walls, resulting in a seamless appearance.
- / The real revolution of the system is the ability to defy gravity using the version SUPREME S500 SlidAir, which offers elimination of the force needed to operate the sash by adding magnetic levitation or support.

Alumil SMARTIA

M630 PHOS



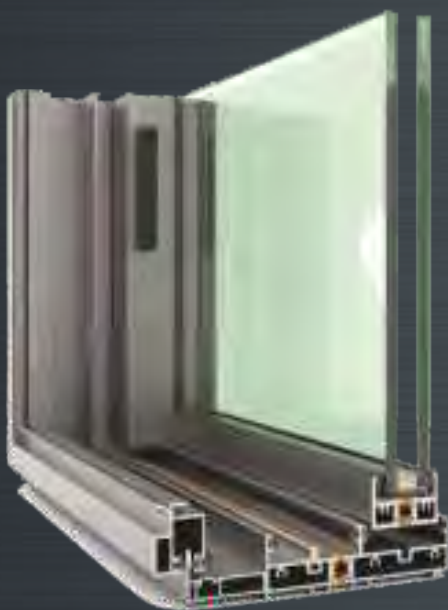
The SMARTIA M630 PHOS sliding system offers a minimal touch in contemporary residences, combining minimal design with high thermal insulation performance.

Following the "less is more" philosophy, all aluminium profiles can be hidden into the walls, providing a total sense of comfort with top functionality and enhanced safety.

- / Basic system depth 63 mm.
- / Maximum natural light with only 44 mm of visible aluminium face width at the interlocking profile.
- / Easy access, thanks to the low threshold. Ideal for children, the elderly and people with special needs.
- / Smooth sliding and maximum functionality, with high resistance to corrosion using stainless steel rollers.
- / Extra concealed profiles available for water drainage.



Alumil SUPREME S600 PHOS



S600 Phos is a minimal sliding system designed to provide slim solutions across different applications and typologies.

- / The original characteristic of the system is that both the fixed frame and the sliding sash can be concealed in the wall, so that no aluminium frame is visible from inside or outside.
- / As a variant, frames can be exposed, with different options for concealing the bottom frame.
- / Special locking devices, in the interlocking profile or in the concealed shutters, provide design freedom.
- / Heavy duty, stainless steel, low height, twin rollers can carry frames of up to 1 ton.
- / Water drainage can be normal or more sophisticated, depending on the profiles used and the floor construction.
- / Excellent smooth sliding with minimal sight lines.
- / Ideal solution for premium villas, luxury apartments & hotels.

Alumil SMARTIA S560



SMARTIA S560 is a remarkably flexible and robust thermally insulated system for Lift & Slide and regular sliding doors. At the same time, it is distinguished by its modern design, thanks to the slim interlocking profile and the low threshold. It provides high thermal insulation performance, robust constructions and is ideal for large spans.

- / Basic system depth 56 mm.
- / Maximum natural light with only 49 mm of visible aluminium face width at the interlocking profile.
- / Easy access thanks to the low threshold, ideal for renovations (version SMARTIA S560 LT).
- / Flexible constructions of Lift & Slide and regular sliding doors with the same design.
- / Extra concealed profiles available for water drainage.
- / Ideal for renovations and hotel solutions, thanks to the wide variety of typologies.



Alumil > SMARTIA S440



SMARTIA S440 is an insulated sliding system which incorporates modern architectural trends and meets high energy efficiency requirements. It is an ideal option for minimal sliding doors with slim sight lines.

- / Basic system's depth 44 mm.
- / Minimum visible interlock width of only 39 mm, so as to maximize visibility and natural light.
- / One of the highest thermal insulation performance for its category.
- / Wide variety of typologies available with optional mounting profiles.
- / Smooth and easy sliding, thanks to specially designed and anodized rails.



For information on the full range of ALUMIL SYSTEMS & products, kindly contact ALUMIL MIDDLE EAST (contact details can be found on the last page).





Alumil SMARTIA S350



SMARTIA S350 is a flexible insulated sliding system with a modern flat design. It is ideal for refurbishments or renovations thanks to its construction easiness.

- / Basic system depth 35 mm.
- / Maximum visibility and natural light with only 25 mm width at the interlocking profile.
- / Easy access with low threshold ideal for renovations (version SMARTIA S350 LT).
- / High thermal insulation with special sash available using anti-distortion polyamides, ideal for dark frames.
- / Smooth and easy gliding, thanks to inox rails.
- / Wide variety of typologies, compatible with various mechanisms.



Alumil SMARTIA

M1 4600




SMARTIA M1 4600 is a non-insulated sliding system with slim lines. It meets the modern architectural trends and the requirements for especially high performance and is the ideal solution for sliding systems in warmer climates.

- / Basic system's depth 35 mm.
- / Maximum visibility and natural light with only 23 mm width at the interlocking profile.
- / Exceptional wind load resistance performance, certified under extreme conditions.
- / Easy access, with low threshold. Ideal for multi-track constructions.
- / Vast range of typologies, compatible with various mechanisms.
- / Smooth and easy gliding, thanks to inox rails.



For information on the full range of ALUMIL SYSTEMS & products, kindly contact ALUMIL MIDDLE EAST (contact details can be found on the last page).





For information
on the full range
of ALUMIL SYSTEMS
& products contact us

➤ Hinged & Pivot Systems

SUPREME PD100 PIVOT
SMARTIA FC80 PIVOT
SUPREME S91
SMARTIA S77
SMARTIA S67
SMARTIA S67 PHOS
SMARTIA S67 URBAN
SMARTIA M9660

Alumil > SUPREME

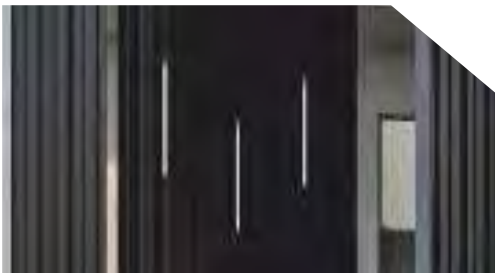
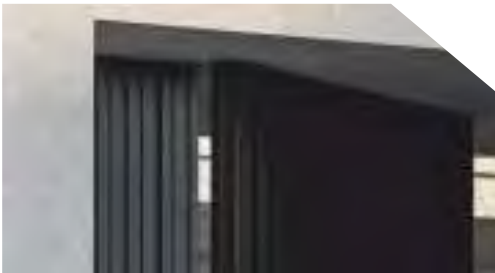
PD 100 PIVOT



PD 100 is an innovative Pivot Entrance Door system that meets the principles of minimalistic design. Its slim lines of 50 mm visible aluminium, allow glazed options with an abundance of natural light into the entryway creating a welcoming and well-lit space, while alternative options are available for more private entrances.

- / Flexibility in terms of big openings (up to 6 m height) from a single sash door up to multiple sash combinations.
- / Available in various options including triple glazing and Barcode cladding.
- / Various options regarding door hardware such as electromagnetic lock with automatic operation, concealed door closer or manual locking.
- / Easy access options such as finger scanner, remote access via smartphone and no touch button.
- / Led lighting integrated options offer excellent aesthetic effects.
- / Adjustable pivot mechanism up to 1000 kg sash weight.

Alumil SMARTIA FC80 PIVOT



ALUMIL introduces a remarkable aluminium hinged gate, designed specifically for contemporary homes and villas.

This gate showcases a unique 'barcode' design on both sides, ensuring a striking and unforgettable first impression. Concealed pivot hinges add to its stunning appearance while ensuring seamless operation.

- / Striking "barcode" design on gate and fence.
- / Concealed pivot hinges for a stunning appearance (supporting up to 180 Kg).
- / Great dimensions, up to 1.5 m width & 3.0 m height.
- / Unlimited customization with integrated LEDs and Woodalux® bars.
- / Combined with Barcode wall cladding solutions for a unique design.

Alumil > SUPREME S91



Top Ranking Passive House
Performance for HOT CLIMATE

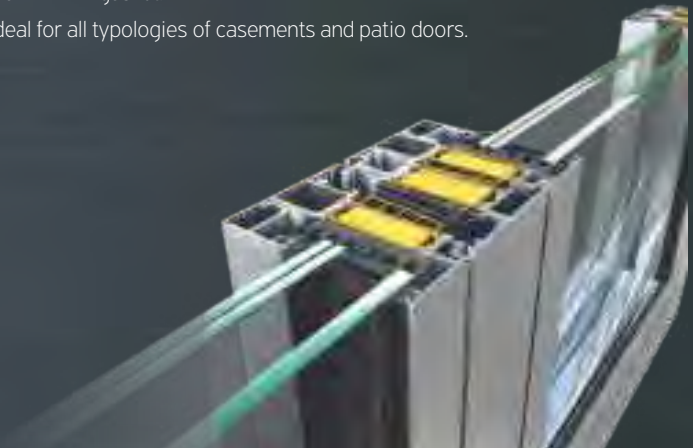


The SUPREME S91 system, designed for passive house constructions, is ALUMIL's latest solution for robust and modern hinged thermally insulated systems. The system is characterized by its best-in-class performance in terms of thermal insulation, watertightness and sound reduction as well as the high level of security that offers. These characteristics make the system the best choice for the most demanding projects in the most advanced markets.

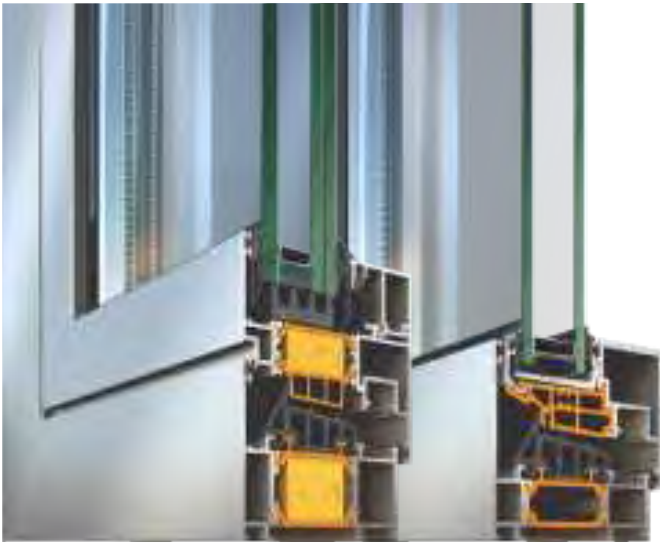
- / Certified by the Passive House Institute (PHI), according to passive house specifications. Visible aluminium face of only 93 mm width.
- / Superior thermal insulation with $U_i \geq 0,67 \text{ W/m}^2\text{K}$, thanks to the use of fiberglass reinforced polyamides 54 mm width, PE insulation foam and NRG bars.
- / Exceptional level of watertightness, achieved by a special co-extruded foam EPDM gasket.
- / Ideal for all typologies of casements and patio doors.



For information on the full range of ALUMIL SYSTEMS & products, kindly contact
ALUMIL MIDDLE EAST (contact details can be found on the last page).



Alumil SMARTIA S77



The system SUPREME S77 is ALUMIL's proposal for advanced insulating casement windows, which meet the high standards of all advanced markets and incorporate a modern design. It is the ideal solution for projects that require high performance and maximum security.

The series gives also the option for concealed sashes through the version SUPREME S77 PHOS, which is an exceptional solution for minimal windows and patio doors allowing maximum natural lighting.

Furthermore, SUPREME S77 meets the highest requirements in terms of thermal insulation, water tightness and sound reduction and is the ideal solution in the demanding category of casement systems.

- / High thermal insulation value $U_i \geq 0,85 \text{ W/m}^2\text{K}$, certified by the ift Rosenheim Institute.
- / Certified by the Passive House Institute (PHI), according to the passive house specifications.
- / Visible aluminium face width 93 mm and only 67 mm with concealed sash.
- / Maximum watertightness at 3 levels through EPDM gaskets in combination with EPDM foam.
- / Specially designed low threshold for easy access to people with special needs.
- / For all typologies of hinged windows and patio doors.
- / Wide range of sill profiles is available.



Alumil SMARTIA S67



S67 is a thermal insulated hinged system of high standards, that offers modern lines and remarkable performance in terms of thermal insulation, air permeability, watertightness & wind load resistance.

- / Frame width 67 mm & sash width 75 mm.
- / Available in three energy versions: Standard-Advanced-High.
- / High thermal insulation value $U_i \geq 1,1 - 2,6 \text{ W/m}^2\text{K}$ by using special 30 mm fiber glass polyamides in the frame and sash profiles & PE insulation foam.
- / Visible aluminium face width 93 mm and only 72 mm with the concealed sash.
- / Available in various designs: flat & curved.
- / 3 levels of watertightness with EPDM gaskets.
- / Certified sound reduction 45dB.



Alumil SMARTIA S67 PHOS



A high standard thermally insulated hinged system that offers modern lines and remarkable performance in terms of thermal insulation, air permeability, watertightness and wind load resistance.

The system is available in 2 versions: With a concealed sash to enhance natural lighting (PHOS version) and with a visible sash (simple version).

For information on the full range of ALUMIL SYSTEMS & products, kindly contact ALUMIL MIDDLE EAST (contact details can be found on the last page).

- / Frame width 67 mm and sash width 75 mm.
- / Available in 3 energy versions: Standard – Advanced – High.
- / High thermal insulation value $U_i \geq 1,1 - 2,6 \text{ W/m}^2\text{K}$ by using special 30 mm fiber glass polyamides in the frame and sash profiles as well as PE insulation foam.
- / Visible aluminium face width of 93 mm and only of 72 mm with the concealed sash.
- / Available in various designs: Flat or curved.
- / 3 levels of watertightness with EPDM gaskets.
- / Certified sound reduction 45 dB.



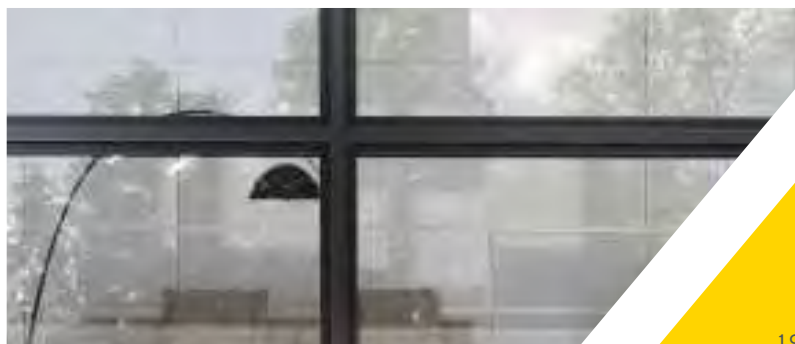
Alumil SMARTIA

S67 URBAN

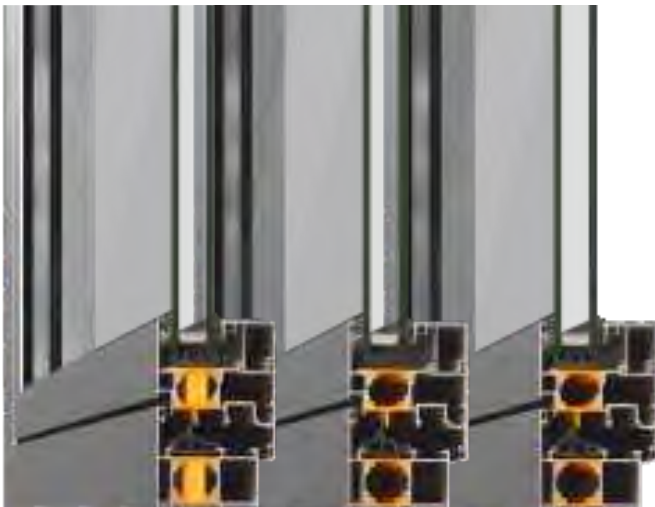


SMARTIA S67 URBAN is the new hinged insulated system of ALUMIL, which successfully blends the present with the past and the classic with the modern. The system's unique aesthetics perfectly meets the contemporary architectural trends for industrial design. The combination of aesthetics with top performance makes the system the ideal choice for an industrial look in new buildings or for upgrading existing steel framed windows.

- / Frame and sash width 105mm
- / Available in 2 versions: Standard and Hi
- / Designed for euro groove mechanism
- / 3 levels of watertightness with the use of EPDM gaskets.
- / Internal, in glass, partitions can be achieved with use of special profiles.
- / Improve aesthetics by using concealed hinges.



Alumil > SMARTIA M9660



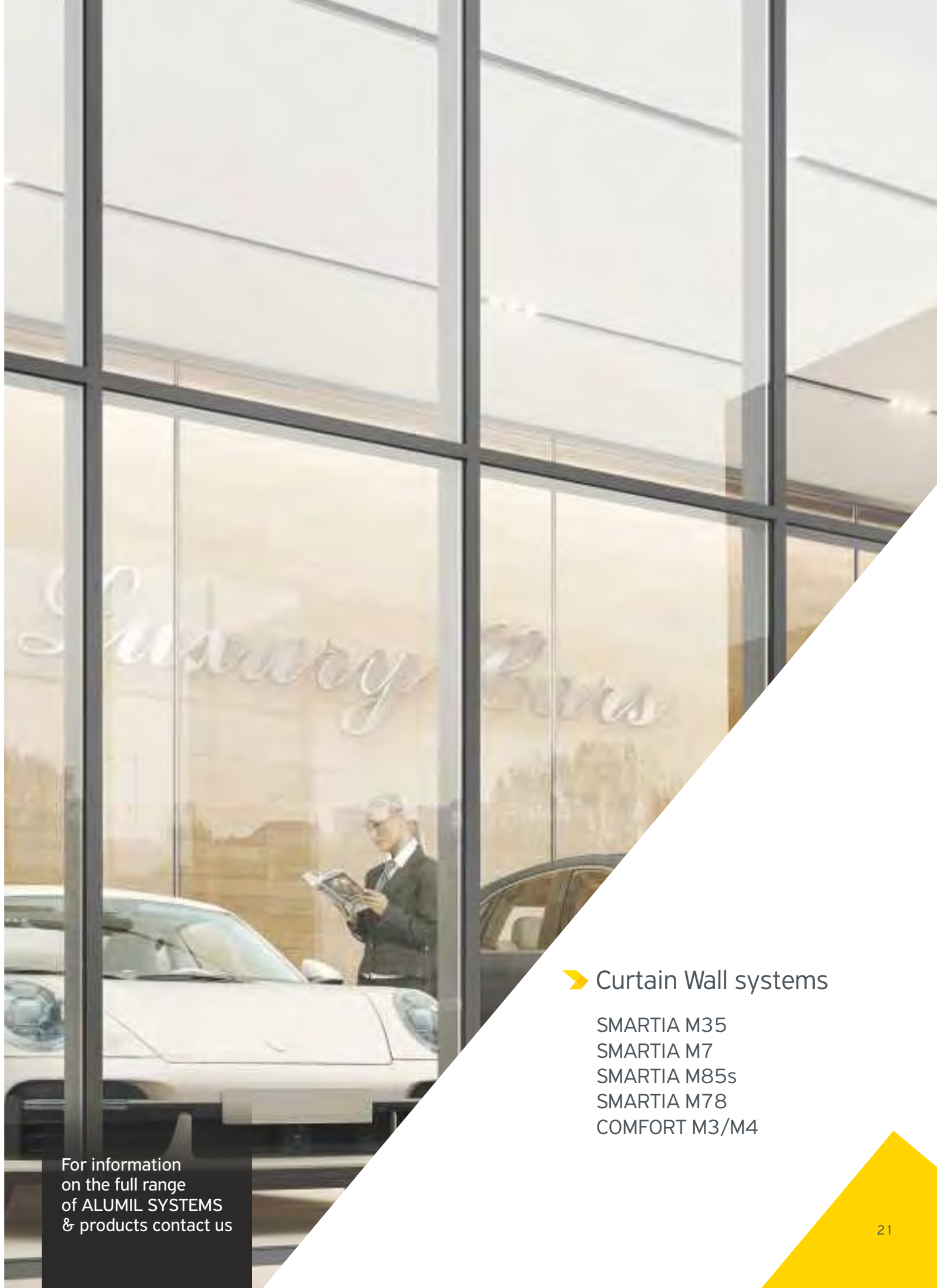
SMARTIA M9660 is a thermal insulated hinged system, for areas with warmer climate, ensuring high quality constructions and application of various typologies, with considerable thermal insulation performance. It is ideal for renovations, combining security and functionality, without requiring high investment costs.

- / Basic system width 56 mm.
- / Available in three energy versions: Standard-Advanced-High.
- / Minimal look, thanks to concealed sash of 70,5mm visible aluminium face width.
- / Special profiles available for various entrance doors typologies.
- / Available in various designs (flat, curved) .
- / European groove or PVC groove hardware can be applied.
- / Certified by the IFT Rosenheim institute.

For information on the full range of ALUMIL SYSTEMS & products, kindly contact ALUMIL MIDDLE EAST (contact details can be found on the last page).



For information
on the full range
of ALUMIL SYSTEMS
& products contact us



➤ Curtain Wall systems

SMARTIA M35
SMARTIA M7
SMARTIA M85s
SMARTIA M78
COMFORT M3/M4

For information
on the full range
of ALUMIL SYSTEMS
& products contact us

Alumil SMARTIA M35



SMARTIA M35 is a “value for money” curtain wall system that ideally combines aesthetics with high performance.

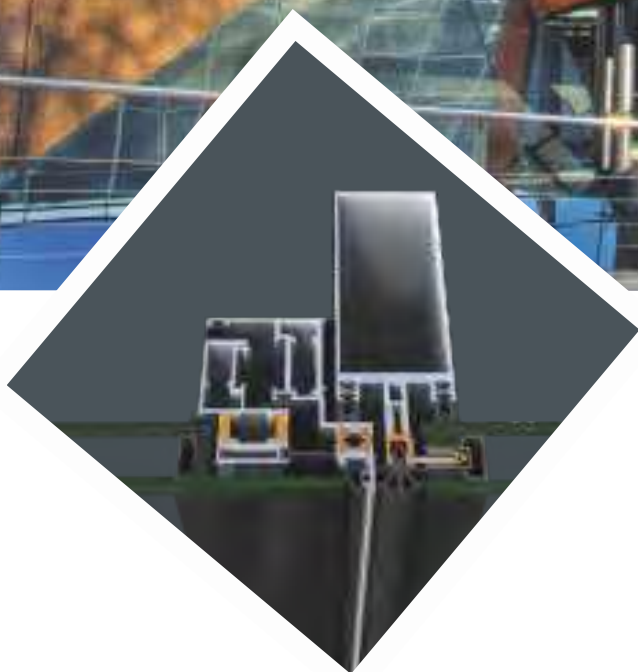
- / Its minimal design offers, compared to other typical curtain wall systems, a reduced sightline of 35 mm, which renders SMARTIA M35 ideal for Transparent Architecture.
- / Basic system width 35 mm.
- / High thermal insulation due to the use of special insulating materials.
- / Ideal for constructions that require a seamless appearance, such as shopfronts.
- / Low fabrication cost thanks to accessories and ease of fabrication.
- / Effective water evacuation system.
- / Implementation of various types of hinged windows: projected, parallel projected, Tilt & Turn and concealed sash.
- / Implementation of entrance door systems.



For information on the full range of ALUMIL SYSTEMS & products, kindly contact ALUMIL MIDDLE EAST (contact details can be found on the last page).



Alumil SMARTIA M7



SMARTIA M7 is a complete system for high energy efficiency curtain walls, that offers quality constructions in affordable prices and fully meets all stability and safety requirements.

- / 50 mm width of mullions and transoms.
- / High thermal insulation thanks to the special insulating material.
- / Option for structural curtain wall constructions without aluminium covers, using the same mullions and transoms.
- / Construction of heavy units up to 700 kg.
- / Low fabrication cost due to accessories and ease of fabrication.
- / Effective water evacuation system.
- / Special support for shading blades.
- / Various hinged window types can be applied: parallel projected, top hung, inwards Tilt & Turn, concealed sash Tilt & Turn, seamless inwards Tilt & Turn and all Tilt & Turn SMARTIA systems.
- / Constructions with inclined or polygonal surfaces.
- / Can be combined with all types of thermally insulated doors of the SMARTIA series.
- / Wide range of certifications in Standard and Structural typologies as well as in projected and concealed sash typologies.



Alumil SMARTIA

M85 s



SMARTIA M85S is a unitized thermally broken curtain wall of ALUMIL.

- / 85mm basic system width
- / Only glazing with total thickness of 32 mm or 44 mm is applicable.
- / Easy replacement of broken glasses.
- / Projected windows can be seamlessly applied.



For information on the full range of ALUMIL SYSTEMS & products, kindly contact ALUMIL MIDDLE EAST (contact details can be found on the last page).

Alumil > SMARTIA

M78



SMARTIA M78 is a cost-efficient unitized curtain wall system that combines minimal aesthetics with structural robustness. Its Structural Silicone Glazing construction offers maximum transparency at the external surface of the façade.

Modular units, including glazing panes, are prefabricated in workshop conditions resulting in a fast and economic installation with minimum manpower and tooling requirements. This construction mode renders M78 an ideal system for high-rise buildings, where meeting demanding deadlines is a prerequisite.

- / Basic system width 78 mm.
- / Structurally bonded glazing, providing a flush exterior appearance.
- / Various hinged typologies can be implemented: projected, parallel projected and all Tilt & Turn windows.
- / Horizontal unit joint: 12 mm.
- / Vertical unit joint: 19 mm.
- / Stack joint height: 92 mm.
- / 3 levels of sealing.
- / Glazing from 24 mm up to 46 mm.




Alumil > COMFORT M3/M4



COMFORT M3/M4 is a semi unitized system for Curtainwalls with:

- / 55 mm width of mullions.
- / Options with structural glazing (M4) or an elegant 16 mm visible aluminium frame around the glass (M3).
- / Vents are supported by the mullions on which they are attached by means of special hardware, which secure the frame on the curtainwall structure.
- / The same vents can be either fixed or projected outwards (windows parallel projected or top hung).
- / Big variety of mullions for high wind loads.
- / Polygonal surfaces are possible.
- / Very easy installation on the building.

For information on the full range of ALUMIL SYSTEMS & products, kindly contact ALUMIL MIDDLE EAST (contact details can be found on the last page).



For information
on the full range
of ALUMIL SYSTEMS
& products contact us

➤ Partition systems

SMARTIA P100

SMARTIA P100 SLIM

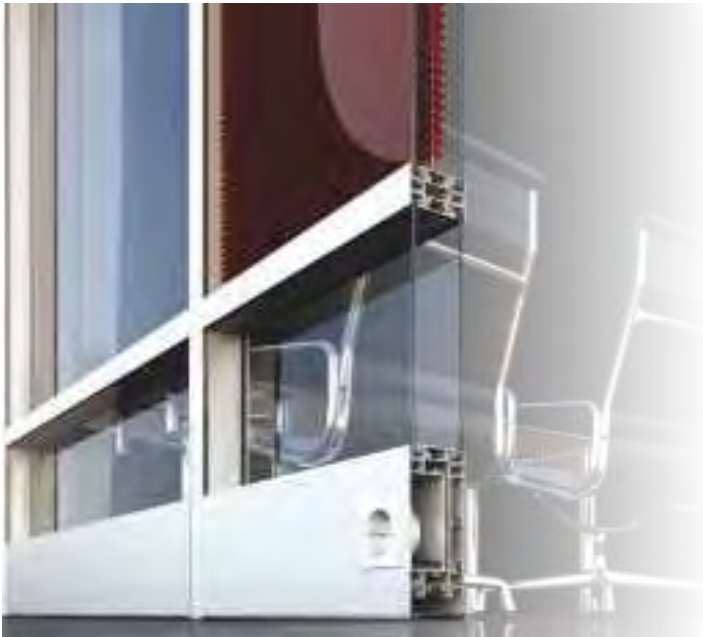
SMARTIA P200

SMARTIA P200 SLIM

SMARTIA P150 URBAN

Alumil > SMARTIA

P100



SMARTIA P100 is a partitioning system with considerably slim aluminium cover profiles, which offers a wide variety of solutions. It provides multiple design options, top sturdiness and ease of installation.

- / In straight minimal lines.
- / Possibility for angled constructions with fixed or variable corners.
- / Special profiles for easy and concealed wires & switches installation.
- / Various door options, either with aluminium frame with round edges or wooden panels in numerous designs.
- / Installation of rotating blinds within the glass panel.
- / Possibility for "open office" constructions.



Alumil SMARTIA

P100 SLIM



SMARTIA P100 Slim is a minimal aluminium-framed office partition with double glazing and excellent sound reduction.

High aesthetics and a wide range of sturdy applications allow working conditions to upgrade.

- / Very thin aluminium profiles and minimum sight lines to enhance lighting levels.
- / Attention to detail, to achieve a highly stylish result.
- / High sound insulation for comfortable working conditions.
- / Technical flexibility and wide variety of typologies, e.g., adjustable corners.
- / Concealed and robust aluminium framework to allow large dimensions.



Alumil SMARTIA P200



SMARTIA P200 is a versatile system for interior partitions in minimal, "structural" lines, ideal for business premises and offices, meeting rooms & banqueting, etc. The double-glazing panel of 98 mm thickness offers exceptional sound insulation properties (42 dB). Additionally, the system provides the option for rotating blinds inside the glass panel and is characterized for the complete solutions it provides.

/ Panel Type

The aluminium framed glass panel can be structural, fixed either with tape or silicone, providing an exceptional look of clear lines and glass. Additionally, there is an option of "semi-structural" panels with more visible aluminium. Not to mention the wooden panel possibility.

/ Construction Type

Apart from the continuous grid, more complex constructions can be made, as for example corner, "T" and cross structures.

/ Door Type

Door panels can be structural on both sides or with glazing bid on one side and structural on the other. Furthermore, a glass or a wooden door can be placed on the aluminium frame.



Alumil SMARTIA

P200 SLIM



SMARTIA P200 Slim is a structural partitioning system with minimum aluminium face width and large glass panels hanging on the concealed aluminium framework, on both sides.

The series offers spaces centration, rich lighting and undoubtedly modern aesthetics.

- / Modern aesthetics with fully glazed wall surfaces (structural).
- / Minimal design thanks to the very thin lines.
- / High sound insulation for comfortable working conditions.
- / Possibility for complex typologies, e.g., cross or "T" shape structures.
- / Concealed and robust aluminium framework to allow constructions of large dimensions.



Alumil SMARTIA

P1 50 URBAN



SMARTIA P1 50 is an additional proposal for office partitions, which consists of single glass panels firmly fixed on a “multi-levelled” aluminium framework. Quite light and with small or larger frames, the series has a distinct “steel look”.

- / Unique design for modern office facilities.
- / Quite robust for ground-to-ceiling constructions.
- / Sufficient sound insulation with single glazing.
- / Possibility of complex typologies, e.g., cross or “T” shape structures.





For information
on the full range
of ALUMIL SYSTEMS
& products contact us

➤ Outdoor Products

SMARTIA Bioclimatic Pergolas
SMARTIA Fixed Pergolas
SUPREME SF85
SMARTIA MF65
WOODALUX
BARCODE
SMARTIA M8200 Railings

Alumil SMARTIA

Bioclimatic Pergolas



Our innovation and experience, always in accordance with top quality and reliability standards, has led to a great variety of functional and customized pergola solutions of high aesthetics that meet all needs.

ALUMIL bioclimatic pergolas literally extend your indoor space, converting it into a new living room to be used all year round.

Unparalleled benefits

- / Efficient protection against sunlight, rain, snow, frost and other weather conditions.
- / A bioclimatic structure integrated with side elements, such as glass sliding panels, shading ZIP screens, LED lighting and sliding shutters.
- / Extremely robust construction, which allows very wide dimensions up to 7,5 x 7,5 m.
- / State-of-the-art fittings and fully compatible automation systems.
- / Real seaside-class surface treatment due to pre-anodising process.

For information on the full range of ALUMIL SYSTEMS & products, kindly contact ALUMIL MIDDLE EAST (contact details can be found on the last page).



Extra equipment

- / Additional shading with special vertically rolling fabric ZIP-screens.
- / Integrated glass sliding system, creating pleasant spaces full of natural light, with controllable environmental conditions.
- / Dimmable LED lights applied on transoms and louvers, providing sufficient and stylish lighting at night.
- / Infra-red heating, as well as sound devices transform the place into a comfortable lounge.



Alumil SMARTIA

Fixed Pergolas



CRETA

The epitome of minimal aesthetics

NAXOS

Traditional design of timeless value

CORFU

An ultra-modern proposal

KOS

Shading & water protection in style

A complete range of fixed pergolas for effective shading and aesthetic upgrading of the surrounding environment. Available in four (4) exceptional models, it offers ideal solutions for modern or traditional residences, hotels, dining and recreation areas.

The fixed pergolas can be integrated with vertical ZIP-screens, horizontal shading fabrics, reeds, polycarbonate and glass panels, spotlights and speakers, etc.

- / Very clean lines with no visible connection points for a totally minimal effect.
- / Extreme robustness to resist intense wind turbulence and allow very large dimensions up to 4,8 x 6,0 m.
- / Top quality surface coating and anodising for outstanding durability, especially in seaside areas.
- / Amazingly easy to manufacture and to install.



Alumil > SUPREME SF85



SUPREME SF85 is an exceptional folding door system, providing minimal aesthetics, outstanding thermal insulation and the ability to create constructions of very large dimensions and extraordinary low sightlines. Its state-of-the-art fittings are designed to achieve unparalleled performance and a smooth, bottom-slide, operation.

Ideal for flawless residential use as well as for heavy-duty constructions and high-end applications. Its construction flexibility (odd and even number of vents, corner typologies and semi-structural versions), provides numerous solutions, meeting every need in a very effective and elegant way.

- / Extremely reduced sightlines offering an excellent minimal design (105 mm sash to sash).
- / Very large dimensions are possible in terms of maximum height (up to 4 m), sash width (up to 1,5 m per sash) and total construction length (infinite).
- / Outstanding thermal insulation for maximum energy savings.
- / Extreme performance in terms of watertightness, air permeability and wind load resistance.
- / Enhanced safety and anti-burglary protection, with quadruple locking latches and anti-lift roller hinges (RC2 certified).
- / Ultra-smooth and long-lasting operation.



Alumil SMARTIA MF65



SMARTIA MF65 is a thermally insulated system for folding doors with minimal design and little visible aluminium. It offers excellent thermal insulation, high watertightness performance and is ideal for large constructions, remaining flawless over time.

- / Elevates the aesthetics thanks to its minimal design and very thin profiles.
- / Achieves top performance in terms of air permeability, watertightness and wind load resistance.
- / Increases energy efficiency and cost savings, thanks to the top thermal insulation (up to $U_w = 1.1 \text{ W/m}^2\text{K}$).
- / Provides enhanced levels of burglary protection, with quadruple latches, 3-point locking and a special anti-lift mechanism.
- / Allows robust large constructions (up to 1.3 m width or up to 3 m height).
- / Offers a wide variety of solutions with an odd number of vents, double or triple glazing, standard and low threshold.
- / Ensures smooth and flawless operation (bottom slide), without any problems, even at the open position, thanks to its high-quality, heavy-duty roller hinges.



WOODALUX is an exceptional combination of aluminium and wood-composite coating, an innovative product of premium quality. The outer layer consists of 20% wood powder and 70% polyethylene, plus 10% other ingredients compliant to "REACH" standards, all blended with a special recipe to offer long-lasting natural look to various constructions.

WOODALUX can be applied to specific applications, but can be also treated as a basic building material and offer an infinite set of customised solutions, outdoors as well as indoors.



- / Decorative grids, hanging and on-wall criss-crossed trellises.
- / Building cladding structures and solar shading facades.
- / Pergola louvers and fencing blinds for outdoor constructions.
- / Customised solutions and architectural innovative concepts.

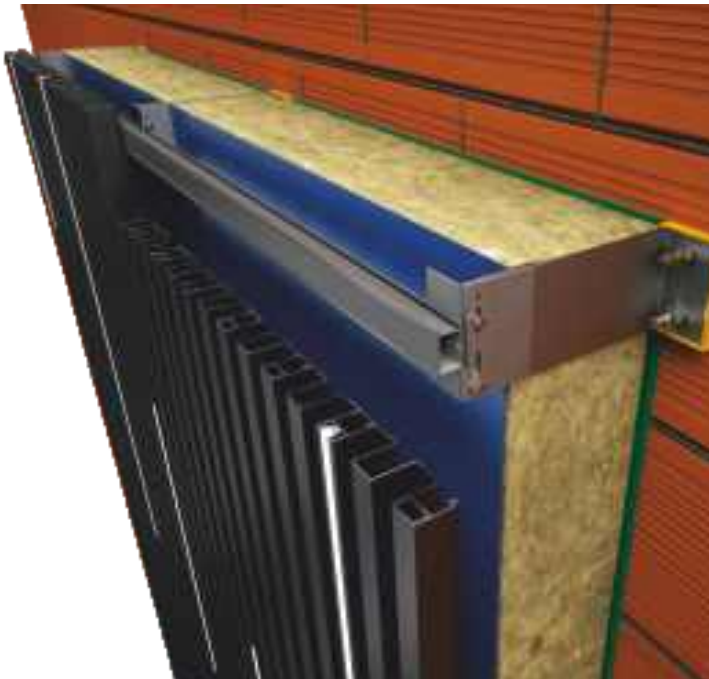
Incomparable advantages

- / No need for maintenance.
- / Resistant to wood decaying factors, like insects, rot as well as salt.
- / Resistant to weather conditions, esp. direct sunlight and UV radiation.
- / Enhanced sturdiness which allows much bigger lengths.
- / Do not break which provides extra safety.
- / Can be bended (even with low radius).
- / Natural and warmer result.
- / Lasts much more than wood sublimation, without fading out when placed directly to sunlight.
- / Better sound & thermal insulation compared to other metallic products (e.g. noise of raindrops).
- / Offer competitive differentiation in the market

For information on the full range of ALUMIL SYSTEMS & products, kindly contact ALUMIL MIDDLE EAST (contact details can be found on the last page).

Alumil SMARTIA

Barcode



SMARTIA Barcode is the ideal series for modern wall-cladding constructions, applied both at exterior and interior, upgrading overall aesthetics and energy levels.

Undoubtedly, an amazingly useful tool for architects to design impressive constructions, and cover, in a unique style, large surfaces of commercial and office buildings, modern residences, etc.

- / Modern and unique aesthetics that create new architectural trends.
- / Unlimited customisation, thanks to the profile range and their combination with LED lighting, perforation and synthetic wood (Woodalux®).
- / Top sturdiness and possibility to cover the whole building.
- / Allows and protects the insulative materials (up to 200 mm thickness).
- / Corrosion resistance thanks to the durability of aluminium and its surface treatment.
- / Allows complex technical applications, i.e., cladding with curtain walls, windows, entrance doors etc.





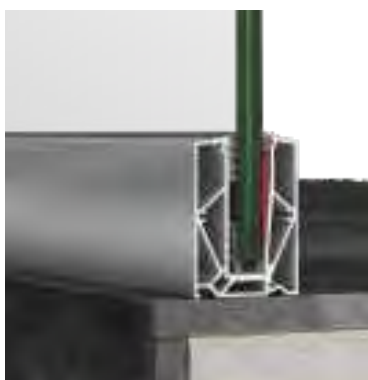
SMARTIA M8200 is a vertical glass support system for the construction of glass railings of modern aesthetics without mullions, so as to leave the visual field free and offer a sense of luxurious freedom. Ideal for modern residences, hotels and shopping malls, public buildings and surrounding areas, for exterior/interior use.

- / Extreme sturdiness due to the continuous profile logic.
- / Easy and fast installation without any glass alignment issues.
- / On-floor, in-floor and side mounted.
- / Compatible with glass laminate tempered 10+10, 8+8, 6+6 and 5+5 mm.
- / Top surface treatment in all anodising and powder coated colours for maximum resistance to weather conditions, esp. at coastal areas.



M8200

On-floor with extreme robustness.
M8200 on-floor, with 8+8mm
and 10+10mm glass



M8207

On-floor with top sturdiness
and smart features.
M8207 on-floor, with 8+8mm
and 10+10mm glass



M8209

Light weight on-floor solution.
M8209 on-floor, with 5+5mm,
6+6mm and 8+8mm glass up
to 70cm height

Alumil SMARTIA

M8200 Railings

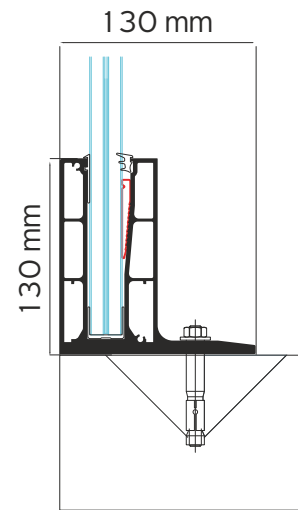


M8217

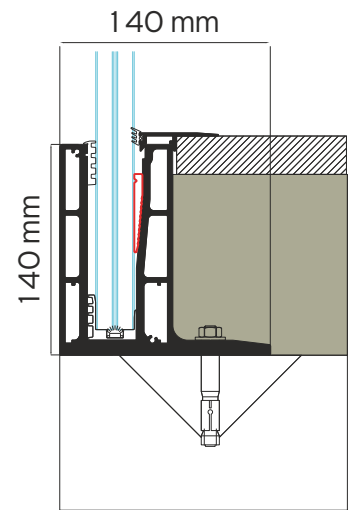
Mounted on the floor and at the edge of the balcony 8+8 mm and 10+10 mm.

M8219

Mounted on the floor and at the edge of the balcony 12+12 mm.



M8217



M8219

Technical characteristics

- / Continuous profiles
- / On-floor, in-floor and side mounted
- / Laminate tempered glass panel 5+5, 6+6, 8+8 and 10+10mm
- / Quadruple or single membrane
- / Special anchorages (2 types)
- / 4 handrails (round, oval, flat)
- / Horizontal linear load up to 4 kN/m



M8202

Side-mounted for finished and semi-finished floor.
M8202 side-mounted, with 8+8mm and 10+10mm glass



M8210

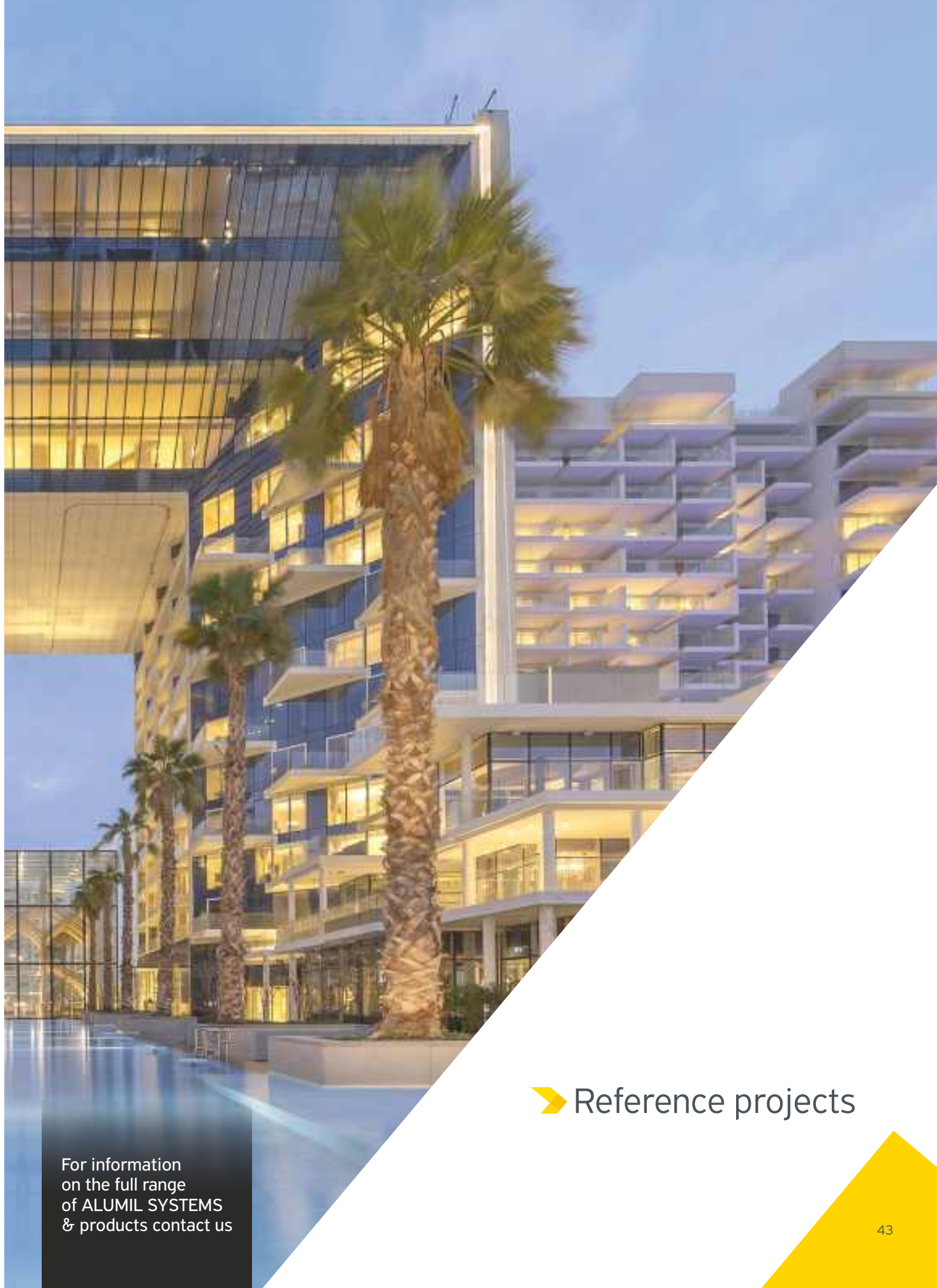
Specially designed for embedded installation.
M8210 in-floor, with 8+8mm and 10+10mm glass



M8208

On-floor with continuous curved profiles.
M8208 on-floor and curved, with 8+8mm and 10+10mm glass





For information
on the full range
of ALUMIL SYSTEMS
& products contact us

➤ Reference projects



Six Senses The Palm, Hotel & Residences
 Palm Jumeirah, Dubai, U.A.E.

Client: Select Group
 Consultant: BSBG
 Main Contractor: INOVO



Damac Lagoons Santorini, Dubai, U.A.E.

Client: Damac Properties Island Oasis Properties
 Consultant: Arif & Bintook Consulting
 Main Contractor: Shapoorji Pallonji & Co. Ltd.



Google building, 111 8th Av. Manhattan
 New York, USA
 Ext. Wall Consultant: Gilsanz Murray Steficek LLP
 Main Contractor: Taconic Management Comp

Lamborghini Villas, Dubai Hills Vista
 Dubai, U.A.E.
 Client: EMAAR
 Consultant: Whitespace
 Main Contractor: Innovo Build UAE





Address Hillcrest Villas, Dubai Hills
Dubai, UAE

Client: Emaar Properties
Consultant: Emaar Properties
Main Contractor: Aroma International Building Contracting L.L.C.



Pier 8 Dubai Marina
Dubai, U.A.E.

Client: Abyaar Real Estate
Consultant: Atkins Global, BHNS Engineering
Main Contractor: Modern Executive Systems Contracting (MESOC)



Ellington Beach House (B+G+7) Palm Jumeirah
Dubai, U.A.E.

Client: Ellington Group
Consultant: ADU Architectural Design Unit
Main Contractor: Al Rakha General Contracting LLC

The butterfly
Vancouver, Canada

Client: Westbank Corp.
Facade Consultant: RDH
Main Contractor: PEAK Construction





**Shams Townhouses by Nshama,
Town Square, Dubai, UAE**

Client: Nshama Properties
Consultant: Arif & Bintok Consulting Architects & Engineers
Main Contractor: Engineering Contracting Company (ECC)

Desert Rock, Red sea, Tabouk Province, KSA

Client: Red Sea Global (RSG)
Consultant: WSP Oppenheim Architecture
Main Contractor: Man Enterprises Al Majal Al Arabi Group



**Canal Front Residences,
Safa B, Dubai water canal,
Safa Park, Dubai, U.A.E.**

Client: Meydan
Consultant: AE7
Main Contractor: United Engineering
Construction (UNEC)



**Century Plaza Hotel
Century city, Los Angeles
California, USA**

Client: Next Century Partners, LLC
Main Contractor: Webcor Builders



**Creek Palace
Dubai Creek Harbour
Dubai, U.A.E.**

Client: Emaar Properties
Consultant: Meinhardt Archgroup
Consultants
Main Contractor: Al Sahel
Contracting, Dubai





**Mohammed Bin Rashid Al Maktoum city,
District One, phase 3A/3B/3C, Dubai, UAE**

Client: Nakheel PJSC / Meydan / District one / Sobha Group
Consultant: Ae7
Main Contractor: MS Construction (Meydan and Sobha JV)



1550 Alberni, Vancouver, Canada

Facade Consultant: RDH
Main Contractor: Graham





Al Sahel Resort Bahrain, Manama, Bahrain

Client: AL SAHEL RESORT

Consultant: DSA ARCHITECTS/ NEXT Engineering

Main Contractor: Al Sahel Contracting Company LLC



Collective 1 Tower, Dubai, U.A.E.

Client: Emaar Properties

Consultant: Rice Perry Ellis (RPE)

Main Contractor: Ginco General Contracting LLC



Adeo Living Tower, Dubai, U.A.E.

Client: SRG Holding

Consultant: Erga Progress Engineering Consultants (UAE)

Main Contractor: Al Habbai Contracting



The Pixel by Makers District, Abu Dhabi, UAE

Client: Imkan

Consultant: Ramboll

Main Contractor: CNCT



AREEJ 1,2,3,4, Sharjah, U.A.E.

Client: Arada
Consultant: Arcadia Middle East
Main Contractor: Modern Building
Contracting Group MBCC



Qasr Al Jurf, Abu Dhabi, UAE

Client: IMKAN
Consultant: MZ ARCHITECTS
Main Contractor: PIVOT



**Deira Waterfront
Dubai, U.A.E.**

Client: Ithra Dubai
Consultant: Design & Architecture
Bureau (DAR Consult)
Main Contractor: China State
Construction Engineering
Corporation LLC



Bloom Towers
(3 Towers G+39/G+29/G+29)

Dubai, U.A.E.

Client: Bloom Properties (Bloom Holding)

Consultant: Al Khawajah Engineering Consultancy
(KWEK)

Main Contractor: Al Oroba Contracting



Al Mirfa Beach Villas, Abu Dhabi, U.A.E.

Client: Abu Dhabi Housing Authority

Consultant: Pioneer Engineering Consultancy LLC
Main Contractor: Combined Group Contracting CO.



Seven Residences - Palm Jumeirah,
Dubai, U.A.E.

Client: Seven Tides LTD.

Consultant: Incorporated Consultants Conin
Main Contractor: Airolink Building Contracting LLC





Seventh Heaven Phase II, Dubai, U.A.E.

Client: Al Barari Firm Management LLC
 Consultant: WSP Middle East (Dubai) PHB Consultant
 Main Contractor: Sustainable Builder (Al Barari Development)

Erec Bldg. No. 40, Dubai, U.A.E.

Client: Emirates Real Estate Corporation (EREC)
 Consultant: Ehaf Consulting Engineers
 Main Contractor: Airolink Building Contracting LLC



**Park Gate Residences
 & The Dubai 1 Residence, Zabeel Park
 Dubai, U.A.E.**

Client: AL Wasl
 Consultant: Arch Group
 Main Contractor: Saleh Construction



Dubai Hills, Dubai, U.A.E.

Client: Emaar Properties
 Consultant: Various
 Main Contractor: Various

Golf Vita Residential Towers
Damac Hills, Dubai, U.A.E.

Client: Damac Properties
Consultant: Lacasa Architects &
Engineering Consultants
Main Contractor: CSCEC



MISK, Sharjah, U.A.E.

Client: Arada
Consultant: Arif & Bintok
Main Contractor: Intermass



Al Duaa Marina Tower, Dubai, U.A.E

Client: MESC
Consultant: DXB Design Studio
Main Contractor: Modern Executive
Systems Contracting LLC



Al Raha Beach Residential Towers , Abu Dhabi, U.A.E.

Client: Link International Properties
Consultant: Pioneer Engineering Consultancy LLC
Main Contractor: Al Firas General Contracting



Al Reem Tower G+M+24, Abu Dhabi, U.A.E.

Client: Sultan Bin Zayed Cultural & Media Center
Consultant: Al Meedan
Main Contractor: Emirates Link Maltauro



Socio Park Heights III, Dubai, U.A.E.

Client: Emaar Properties
Consultant: Rice Perry Ellis (RPE)
Main Contractor: Dubco Construction LLC



Reach British School, Abu Dhabi, U.A.E.

Client: Reach British School
Consultant: FIRAS Engineering Consultants
Main Contractor: NEXCON

**Madinat Jumeirah Living
Dubai, U.A.E.**

Client: Dubai Properties
Consultant: DSA Architects/Next Engineering
Main Contractor: Al Sahel Contracting Company LLC





The Nest (99 villas), Wadi Al Safa, Dubai, U.A.E.
 Client: Al Barari Development Co.
 Consultant: Emkaan Engineering Consultancy
 Main Contractor: Sustainable Builder (Al Barari Development)



Ras Al Hamra Development Project (80 Villas), Muscat, Oman
 Client: Petroleum Development Oman
 Consultant: KEO International
 Main Contractor: Oman Shapoorji Construction



Corporate Tower, Jumeirah Lakes Towers (JLT) Dubai, U.A.E.
 Client: ORRA Real Estate Development
 Consultant: AL HAWRAA Engineering Consultants
 Main Contractor: China Railway 18th Bureau Group



Ashjar-Al Barari Development, Dubai, U.A.E.
 Client: Al Barari Development Co.
 Consultant: Sustainable Builder (Al Barari Development)
 Main Contractor: Sustainable Builder (Al Barari Development)



Gems International School, Abu Dhabi, U.A.E.
 Client: Baniyas Investment & Development Co. LLC
 Consultant: National Engineering Bureau
 Main Contractor: Chicago Maintenance & Construction Co. LLC

W Hotel The Palm Jumeirah
Dubai, U.A.E.

Client: Al Sharaq Investment LLC
Consultant: Robert Mathew,
Johnson-Marsal (RMJM)
Main Contractor: Al Futtaim
Carillion LLC



IBIS Hotel, Amman, Jordan

Client: Actions Hotel
Consultant: Consolidated Consultants
Engineering Environments Co.
Main Contractor: Mo'ata Contractors Co.



Dannat Al Emarat
Abu Dhabi, U.A.E.

Client: Premium Hospital
Main Contractor: TERNA S.A.

Jumeirah Park Villas
(1,100 villas), Dubai, U.A.E.

Client: NAKHEEL
Consultant Dar Al Handasah
Main Contractor: Various



Warsan Villas, Dubai, U.A.E

Client: Nakheel Co. LLC

Consultant: Ae7

Main Contractor: Ginco Contracting



Nawras Commercial Centre
Muscat, Oman

Client: Osool Gulf Investment Company

Consultant: Al Saqf Engineering Consultants

Main Contractor: Unique Contracting Co. LLC

Al Zamil Suites, Seef, Bahrain

Main Contractor: Al Taitoon Contracting Co WLL



Radisson Blu Hotel

Aqaba, Jordan

Client:

Moon Beach for Tourism and Investment

Consultant:

Sigma Consulting Engineers

Main Contractor:

Al Fadel Engineering & Contracting





Marassi Shores
Manama, Bahrain

Client: Eagles Hills
Consultant: Gulf House Engineering
Main Contractor: Dadabhai Construction



Providence Tower, Manama, Bahrain

Client: Twahbit Properties
Consultant: Aref Sadeq Design Consultants
Main Contractor: Juma Construction



DIB Residential Development, Jumeirah Village Circle, Dubai, UAE

Client: NAKHEEL
Consultant: DEWAN Architects & Engineers
Main Contractor: Darwish Engineering Emirates



Crystal Residence
15 buildings, Gwan Island, Qatar

Client: United Development
Company UDC
Consultant: KEO
Main Contractor: China Railway
18th Bureau Group



Maryam Gate Residences
Dubai, UAE

Client: Eagle Hills Properties
Consultant: SIE - Studio International Engineering Consultants
Main Contractor: GINCO

GOSI Residential Project

(400 Low Rise Towers and Villas), Jubail, Saudi Arabia

Client: Azmeel
Consultant: Sofcon



Creek Rise
Dubai, U.A.E.

Client: EMAAR
Consultant: DAR
Main Contractor: Al Fara'a



Al Mutahidah Qatar, Doha, Qatar

Main Contractor: Leighton Contracting Qatar WLL





**Upper Crest
Burjside Terrace**
Dubai, U.A.E.

Client: Damac Properties
Consultant: ZASPSE
Main Contractor: ANC

Golf Place Villas, Dubai, UAE

Client: EMAAR
Consultant: DEWAN Architects & Engineers & Aedas
Main Contractor: TROJAN





City Center Tower Bahrain, Jidhafs, Bahrain

Client: Mr. Mahmood Fageeh
 Consultant: Arabs Architects
 Main Contractor: Al Taitoon Contracting Co WLL



Marina Gate 3, Dubai, U.A.E.

Consultant: Engineering Consortium Consulting Engineers
 Main Contractor: ALEC



Saudi Aramco Ajyal Community of Excellence Project, KSA

Client: ARAMCO
 Main Contractor: AJYAL AL Dammam Contracting Est

MASAAR, Al Juwaiza, Sharjah, UAE

Client: MASDAR CITY LLC
 Consultant: DEWAN Architects & Engineers
 Main Contractor: Intermass Engineering & Contracting CO. LLC.





AHAD Residences, Dubai, UAE

Client: AHAD Real Estate Development / Mercury Investments, UAE
 Consultant: VX STUDIO (EX-VE EXPERTS)
 Main Contractor: Evan Lim Penta - Construction



**Hartland Waves, Waterfront District
 Sobha Hartland, Dubai, UAE**

Client: Sobha Group
 Consultant: PNC ARCHITECTS

Bloom Gardens, Eastern Mangrove Corniche, Abu Dhabi, UAE

Client: BLOOM Holding
 Consultant: AVANTGARDE Architects & Engineers
 Main Contractor: Emirates Link Maltauro





The Valley, Dubailand, Dubai, UAE

Client: EMAAR

Consultant: WHITE SPACE

Main Contractor: GINCO General Contracting LLC



Citizen School, Dubai, UAE

Client: AL Zarooni Emirates Investments LLC

Consultant: Godwin Austen Johnson

Main Contractor: Intermass Engineering & Contracting CO, L.L.C.



Stella Maris, Dubai, Dubai Marina, Dubai, UAE

Client: Scope Investment

Consultant: LACASA Architects & Engineering Consultants

Main Contractor: General Construction Company (GCC)



The Hillside Villas at Jumeirah Golf Estates, Dubai, UAE

Client: EMAAR

Consultant: Federal Engineering Consultants and Project Management

Main Contractor: BHATIA General Contracting Company LLC



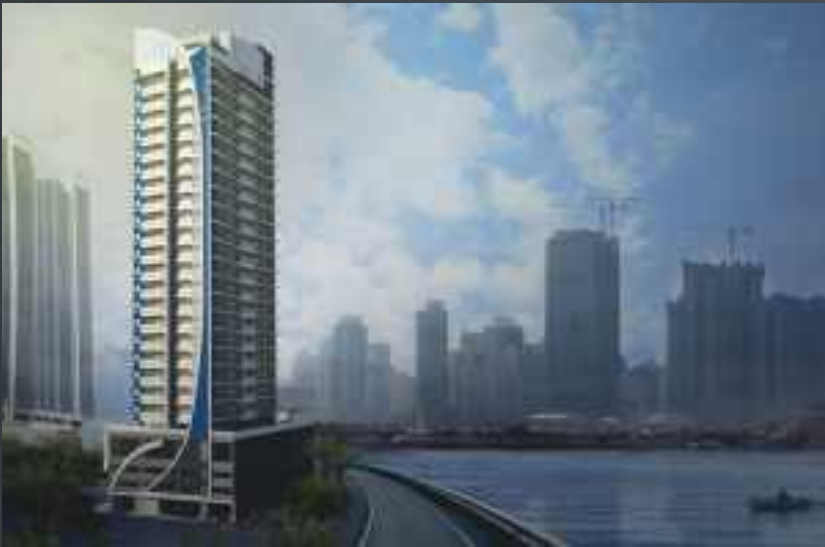


MAG City Townhouses, Mohammed Bin Rashid City, Meydan, Dubai, UAE

Client: MAG Property Development

Consultant: DEWAN Architects & Engineers

Main Contractor: Intermass Engineering & Contracting CO. L.L.C.



Vision Tower, Manama, Bahrain

Client: Tkuwaiti Bahraini Trading and Contracting CO

Consultant: Syrconsult International Planners
and Consulting Engineers

Main Contractor: Almoayyed Construction



ADNEC Residences

Abu Dhabi, UAE.

Client: (ADNEC)

Consultant: Al Firas General Contracting

Main Contractor: Al Firas General Contracting



JUBAIL ISLAND Mixed Use Development, Abu Dhabi, UAE

Client: JIIC

Consultant: EHAF Consulting Engineers

QETAIFAN Island North, Qatar

Client: QETAIFAN Projects

Consultant: WS ATKINS & Partners Overseas





Jeddah Marriott Luxury Hotel & Residences
 210 rooms and 94 residences, Madinah Road, Jeddah, KSA
 Client: Al Hokair Group
 Consultant: Design Worldwide Partnership
 Main Contractor: Specialized Contracting Company



Vida Residences at Creek Beach
 Dubai Creek Harbour, Dubai, UAE
 Client: Dubai Creek Harbour / Dubai Holding /
 The Lagoons Development LLC
 Consultant: SSH
 Main Contractor: Engineering Contracting
 Company (ECC)



Havelock City Tower, Colombo, Sri Lanka
 Consultant: Design Group Five International
 Main Contractor: International Construction Consortium



NOYA Yas Living, North Yas Development, Yas Island, Abu Dhabi, UAE
 Client: ALDAR Properties
 Consultant: ARCADIS
 Main Contractor: AL Rakha General Contracting LLC

Murooj Al Furjan, Al Furjan, Dubai, UAE
 Client: NAKHEEL
 Consultant: LACASA Architects & Engineering Consultants
 Main Contractor: GINCO General Contracting LLC





American University of Iraq, Sulaimania, Iraq
Consultant: Dar Al Handasah/ Perkins & Will



**Tadrous Building
Commercial Complex**
Amman, Jordan

Client: Modern Systems
& Computer Trade Co.
Consultant: Al Bouca'i Engineering
Consulting Bureau
Main Contractor: Modern Systems
& Computer Trade Co.

Luxury Tower 1
(20 Storey Building), Juffair, Bahrain

Client: Mr. Ali Abdulla
& Abdulla Zinj Transport
Consultant: Arab Architects
Design & Consultant
Main Contractor: Al Zinj Transport



Down Town Views
Dubai Mall extension Dubai, UAE

Client: EMAAR
Consultant: Arch Group
Main Contractor: CSCESC- China State





Arab Open University
Amman, Jordan

Consultant: Consoliated Consultants Co.
Main Contractor: Muttah Co.



**Park Rotana Mixed Use -
Development Project 4
Buildings.** Abu Dhabi, U.A.E.

Client: Faithful Gould
Consultant: Al Salam
Main Contractor: Terna SA



Durrat Al Bahrain
(2,000 Luxury Sea Resort Villas & 3,600 Apartments)
Bahrain Island, Manama, Bahrain

Client: Durrat Al Bahrain - Government of Bahrain and Kuwait Finance House
Consultant: WS Atkins Partners Overseas
Project Manager: KMC & Bovis Lend Lease JV



Dubai Maritime City - Control Building
Dubai, U.A.E.

Client: ANWA Real Estate Development
Consultant: Arenco / Turner
Main Contractor: Arabtec



**Raffles Hotel
& Wafi Mall Phase Extension**
Dubai, UAE

Client: MKM Commercial Holdings LLC
Consultant: Arif & Bintook
Main Contractor: Khansaheb Civil Engineering



Ramada Hotel & Suites

Amwaj Island, Bahrain

Client: Mannai Trading & Contracting SPC

Consultant: EPCOMain

Main Contractor: Mannai Holding



InterContinental Residence Suites,

Business Bay, Dubai, U.A.E.

Client: AL ALI Property Investment

Consultant: KLING CONSULT Architects and Engineering



Al Barari Villas (320 Villas), Dubai, U.A.E.

Client: ABWAB

Consultant: Arif & Bintok

Main Contractor: Al Naboodah

Golf Suites, Dubai, UAE

Client: EMAAR

Consultant: Khatib& Alami

Main Contractor: Parkway





Sabah Rotana, Sheikh Zayed Road
Sofouh Gardens, Dubai, UAE

Client: RS REALTY FZ-LLC
Consultant: ALASRI Engineering Consultant
Main Contractor: China Railway 18th Bureau Group LLC UAE



Twin Tower Residential Buildings
Sanabis, Bahrain

Client: Reliance Industries Ltd.
Consultant: MSCEB - Mohamed Salahuddin Consulting Engineering Bureau
Main Contractor: TERNA WLL



Specialized Technical Services Building
Amman, Jordan

Client: General Contracting Co.
Consultant: Diran Masri Sarar
Main Contractor: General Contracting Co.



Al Wathba North & South Emirati Neighbourhood, Abu Dhabi, UAE

Client: ADGS (ABU Dhabi General Services Company) Musanada
 Consultant: KHATIB & ALAMI
 Main Contractor: NAEL Contracting



The Grand (PLOT A 004), Dubai, U.A.E.

Client: Emaar Properties
 Consultant: Atkins Engineering and Design
 Main Contractor: Al Basti & Mukhta LLC



ALJADA by Arada Sharjah, UAE

Client: ARADA
 Consultant: MIMAR Consultants/ ARCADIA
 Main Contractor: United Engineering Construction LLC/ CSCEC/
 Intermass/ Best Building/ Mohammad Abdulmohsin
 Al Kharafi & Sons Wll

The Address Hotel & Serviced Apartments, Bahrain

Client: Eagle Hills Properties LLC
 Consultant: Mohammad Salahuddin Consulting Engineering Bureau (MSCEB)
 Main Contractor: Dadabhai Construction WLL





Sharjah Sun Island 295 Villas

Sharjah, U.A.E.

Client: Sharjah Oasis

Consultant: Adnan Saffarini Consultant Office

Main Contractor: Jabal Hafeet Contracting

Da'wah and Guidance Building, Ministry of Islamic Affairs

Riyadh, Saudi Arabia

Consultant: WMA Contracting & Project Management

Main Contractor: WMA Contracting & Project Management



Abu Ghazaleh Tower (G+7+36)

Sharjah, U.A.E.

Consultant: Al Emmar Engineering Consultant

Main Contractor: Darwish Engineering



Ruler's Court (Office Building Extension), Dubai, U.A.E.

Client: Government of Dubai

Consultant: Arif & Bintok

Main Contractor: Khansaheb Civil Engineering





Zara Center, Amman, Jordan

Consultant: Sigma Consultants

Main Contractor: IBSF Construction Co.

**The Grand Tower, (39 storey building)
Seef, Bahrain**

Client: Bin Faqeeh Real Estate Investment Co. SPC

Consultant: Arab Architects Design & Consultant

Main Contractor: Al Taitoon Contracting Co WLL



Kempinski Dead Sea (5 star), Amman, Jordan

Client: United Saudi Jordanian CO.

Consultant: Perspective Design





Sustainable City (500 Villas)
Dubai, U.A.E.

Client: Diamond Developers
Consultant: Al Ajmi Engineering Consultants
Main contractor: JEET Contracting



Kempinski Aqaba, Jordan

Client: United Saudi Jordanian Co.
Consultant: Perspective Design

Qatar Navigation Showroom
Doha, Qatar

Consultant: James Cubitt & Partners
Main Contractor: Satal Contracting





Anantara Eco Resort & Spa
Mina Al Arab, Ras Al Khaimah, UAE

Client: RAK Properties
Consultant: Perkins Eastman
Main Contractor: AL NUAIMI GROUP



Uniworld Head Quarters, Dubai, U.A.E.

Consultant: Kalavaal Architects
Main Contractor: Penta Construction



University of Bahrain, Bahrain

Client: Ministry of Works, Power & Water

FIVE PalmJumeirah Hotel
Dubai, U.A.E.

Client: FIVE
Consultant: P&T Architects and Engineers
Main Contractor: China State Construction



BlueBay Walk (6 towers)

Dubai, UAE

Client: Sharjah Oasis

Consultant: NAGA

Main Contractor: High Star



RP Tower, (G+15 Storey Building)

Seef, Bahrain

Client: RP International Holding Company

Consultant: Salah Al Kooheji Consulting
Architects SPC

Main Contractor: Al Taitoon Contracting Co WLL



Al Jassim Tower

Doha, Qatar

Client: Al Jassim Real Estate & Asset Management

Consultant: AEB- Arab Engineering Bureau





Qatar Airways
Muscat, Oman

Client: Qatar Airways
Consultant: Ibrahim Jaidah
Main Contractor: Sakshy Engineering



Armada
Manama, Bahrain

Client: Armada Retail Concept
Consultant: Arabs Architects
Main Contractor: United Arab Construction



Sarab 101 Villas, Sharjah, U.A.E.

Client: Arada
Consultant: Arcadia Middle East
Main Contractor: Klampfer Middle East

Suha Plaza Project, Manama, Bahrain

Client: Suha Investment
Consultant: Aref Sadeq Design Consultants
Main Contractor: Juma Construction



Maple Villas, (1800 villas)

Dubai Hills, U.A.E.

Client: EMAAR

Consultant: Arif & Bintok

Main Contractor: Trojan



Arch Hotel, Manama, Bahrain

Client: A. Dadabai

Consultant: Habib Modara art & Architecture

Main Contractor: HQ Construction

Special Economic Zone, Authority HQ Building

Duqm, Oman

Client: Special Economic Zone Authority

Consultant: Simon Engineering & Partners

Main Contractor: Hasan Juma Backer Trading & Contracting Co. LLC





**The Kilimanjaro
Hyatt Recency, Kempinski Hotel**
Dar es Salaam, Tanzania

Client: ASB Tanzania Ltd.
Consultant: ARD Singapore
Main Contractor: China Railway, Tanzania

Sultan Qaboos, Muscat, Oman

Client: Al Fardhan
Consultant: Ibrahim Jaidah Architect and Engineers
Main Contractor: Al Turki/ Tasnim



MBM Tower, Al Seef, Bahrain

Client: Mr. Mohammed Mussalam
Consultant: Gulf House Engineering
Main Contractor: Fundament



Baniyas North Residential Development, Abu Dhabi, UAE

Client: MODON Properties
Consultant: National Engineering Bureau





**Juffair Residential Tower
of Gulf Hotel**
Manama, Bahrain

Client: Gulf Hotels Group
Consultant: ANSARI Engineering Services
Main Contractor: OLYMPIC Contracting



YAS Family HILTON Resort
Abu Dhabi, U.A.E.

Client: Miral
Consultant: WSP
Main Contractor: San Jose, Fibrex JV

**Sidra Villas
(more than 1.200 villas), Dubai Hills**
Dubai, U.A.E.

Client: Emaar
Consultant: National Engineering Bureau/AL GURG
Main Contractor: GINCO/Torjan



Akoya Artesia, Dubai, U.A.E.

Client: DAMAC
Main Contractor:
China State Construction





Akoya Oxygen Villas

Dubai, U.A.E.

Client: DAMAC

Consultant: ECC/KEO

Main Contractor: Multiple Contractors



SABIS International School, Aljada

Sharjah, UAE

Client: ARADA

Consultant: MIMAR Consultants

Main Contractor: ASGC Group



City Hospital, Health Care City, Dubai, U.A.E.

Client: Welcare World Health Systems

Consultant: Sharafi PHB

Main Contractor: Al Ahmadiyah AKTOR

Tower Number 9 - Dubai Marina

Dubai, U.A.E.

Client: Select Group

Consultant: National Engineering Bureau

Main Contractor: ALEC





Juman Two, Al Mouj, Muscat, Oman

Client: Al Mouj, Muscat
 Consultant: SSH
 Main Contractor: Shaksy Engineering Services L.L.C. (Shaksy Group)

S Plaza
 Manama, Bahrain

Client: Mr. Saeed Radhi Ali Ahmed
 Consultant: Syrconsult International Planners
 and Consulting Engineers
 Main Contractor: HHC



FIVE Jumeirah Village Hotel
 Dubai, U.A.E.

Client: FIVE HOTELS
 Consultant: P&T Architects and Engineers
 Main Contractor: China State Construction





Golf Grove Townhouses, Dubai Hills, U.A.E.

Client: Emaar Properties

Consultant: U + A Architects

Main Contractor: Parkway International Contracting LLC

Fontana Garden Towers

(3 towers G+45 each) , Manama, Bahrain

Client: Kooheji Developers & Contracting

Consultant: Arab Architects

Main Contractor: Kooheji Developers & Contracting





**Golf Towers
Muscat Hills**
Muscat Hills, Oman

Client: Muscat Hills Development
Consultant: ViA International Engineering Consultancy LLC
Main Contractor: AZ Engineers



Tecom II Tower, Dubai, U.A.E.

Client: Al Fahad Holding
Consultant: ACE: Associated Consulting Engineering Intl.
Contractor: Khalifa Alfahad Contracting Co.



Al Jawharah Tower G+54 (2nd Tallest Tower in Jeddah)
Jeddah Corniche, Saudi Arabia

Client: DAMAC
Main contractor: Drake & Scull





Tatweer Buildings Company (TBC),
60 schools in Jeddah and Makkah, KSA

Client: WAVE 1
Consultant: KHATIB & ALAMI
Main Contractor: AL BAWANI



AKOYA G+7 Golf Apartments
Dubai, U.A.E.

Client: Damac Crescent Properties LLC
Consultant: Various
Main Contractor: ASCON

Akoya Golf Villas
Dubai, U.A.E.

Consultant: AECOM
Main Contractor: Various



NOOR Tower
Doha, Qatar

Client: Royal Group
Consultant: James Cubitt and Partners
Main Contractor: Oriental Enterprises Contracting



ON320, Colombo, Sri Lanka
Main Contractor: SANKEN



Porta Reef

(3x10 storey Buildings)
Reef Island, Bahrain

Client: ADIH
Consultant: Scott Wilson



S Hotel

Al Manama, Bahrain

Client: Mr. Saeed Radhi
Consultant: Bahrain Engineering Bureau
Main Contractor: Al Taitoon Contracting



Al Zahia Phase II

(197 villas), Sharjah, U.A.E

Client: Sharjah Holding
Consultant: Khatib & Alami
Main Contractor: Al Qabdash



101 Worli Residences

Mumbai South, India

Client: ENPAR





ADNOC Bachelor Accommodation
(14 Buildings), Abu Dhabi, U.A.E.

Client: Abu Dhabi National Oil Company
for Distribution
Main Contractor: Target



Juffair Heights, Manama, Bahrain

Client: Dadabhai Development & Properties Management
Consultant: Habib Modara Arts & Architecture
Main Contractor: Dadabhai Construction



Al Forsan Hotel, Hoor, Bahrain

Client: Mr. Fadel Mohd Al Bado
Consultant: Arab Architects Design & Consultant
Main Contractor: Al Qaed Contracting



Saadiyat Beach Apartments
(7 Blocks of Apartments)
Abu Dhabi, U.A.E.

Client: Tourist Development
& Investment Co.
Consultant: GHD
Main Contractor: Dhabi Contracting



MBR Golf Villas, Dubai Hills Estate, UAE

Client: Emaar Properties PJSC
 Consultant: Al Basti & Muktha
 Main Contractor: LACASA / BHNS Engineering



Foremarke School, Dubai, U.A.E.

Client: Evolve Knowledge Investments
 Consultant: Brewer Smith Brewer Gulf



Spring Hills 1 & 2 Multi Storey Building, Juffair, Bahrain

Client: Abdul Ghaffar Kooheji
 Consultant: Arab Architects Design & Consultant
 Main Contractor: Kooheji Contractors



Mina by Aziz, Dubai, UAE

Client: Azizi
 Consultant: 360° degrees architectural design



Tala Bay Resort, Aqaba, Jordan

Client: Jordan projects for Tourism Development
 Consultant: Mohammed Mahmoud Abu Afifa Office
 Main Contractor: Aqaba Gulf Contracting Company



Mercedes Benz Central Showroom, Tubli, Bahrain

Client: Mercedes Bahrain
Consultant: Map Design Co.
Main Contractor: Dar Al Tasneen



Gold & Diamond Park, Dubai, U.A.E.

Client: Emaar Properties PJSC
Consultant: Robert Mathew, Johnson Marsal (RMJM)
Main Contractor: Al Basti & Mukhta LLC



Ain Al Fayda Emirati Housing 2000 Villas, Al Ain, U.A.E.

Client: Musanada
Consultant: NPC
Main Contractor: PAL



Arab Open University in Oman, Jordan, Bahrain

Consultant: Arab Architects



**Rixos Hotel, Al Fattan Resort
The Palm Jumeirah, Dubai, U.A.E.**

Client: Al Fattan Group
Consultant: DSA
Main Contractor: SEMBOL



Palm Views, Palm Jumeirah, Dubai
(2 Buildings of Residential Apartments)
The Palm Jumeirah, Dubai, UAE

Client: NAKHEEL
Consultant: Dar Al Handasah
Main Contractor: SS Lootah



Palma Residence, (104 Luxury Villas)
The Palm Jumeirah, Dubai, UAE

Client: NAKHEEL
Consultant: Dar Al Handasah
Main Contractor: Dubai Civil Engineering



Knight Bridge Mansion
Amwaj Island, Bahrain

Client: Mr. Abdul Aziz Buhajeih
Consultant: United Engineering Co.
Main Contractor: Al Taitoon Contracting Co WLL

Al Yal Tower
Manama, Bahrain

Client: First Real Estate
Consultant: Arab Architects Design & Consultant
Main Contractor: Kooheji Contractors



Premier Inn Hotel
Abu Dhabi, U.A.E.

Client: Abu Dhabi Airports Co.
Consultant: DEWAN
Main Contractor: BAM International

EN NOVEMBER 2023

ALUMIL MIDDLE EAST DMCC

Mazaya Business Avenue BB 1
29th Floor, Office #2907
Jumeirah Lakes Towers Dubai, UAE
Tel.: +971 4 4425 930
Fax: +971 4 441 6528
marketing.uae@alumil.com
www.alumil.ae



www.alumil.ae