

Hebei Kingflex Insulation Co.,Ltd.

Office Address:

No. 82 Huaxiang Road, Langfang Economic and Technological Development Zone, Hebei Province,  
065001, China

Tel: 0086-316-6060333/6074888

Fax: 0086-316-6073566

Email: [info@kwiweb.com](mailto:info@kwiweb.com)

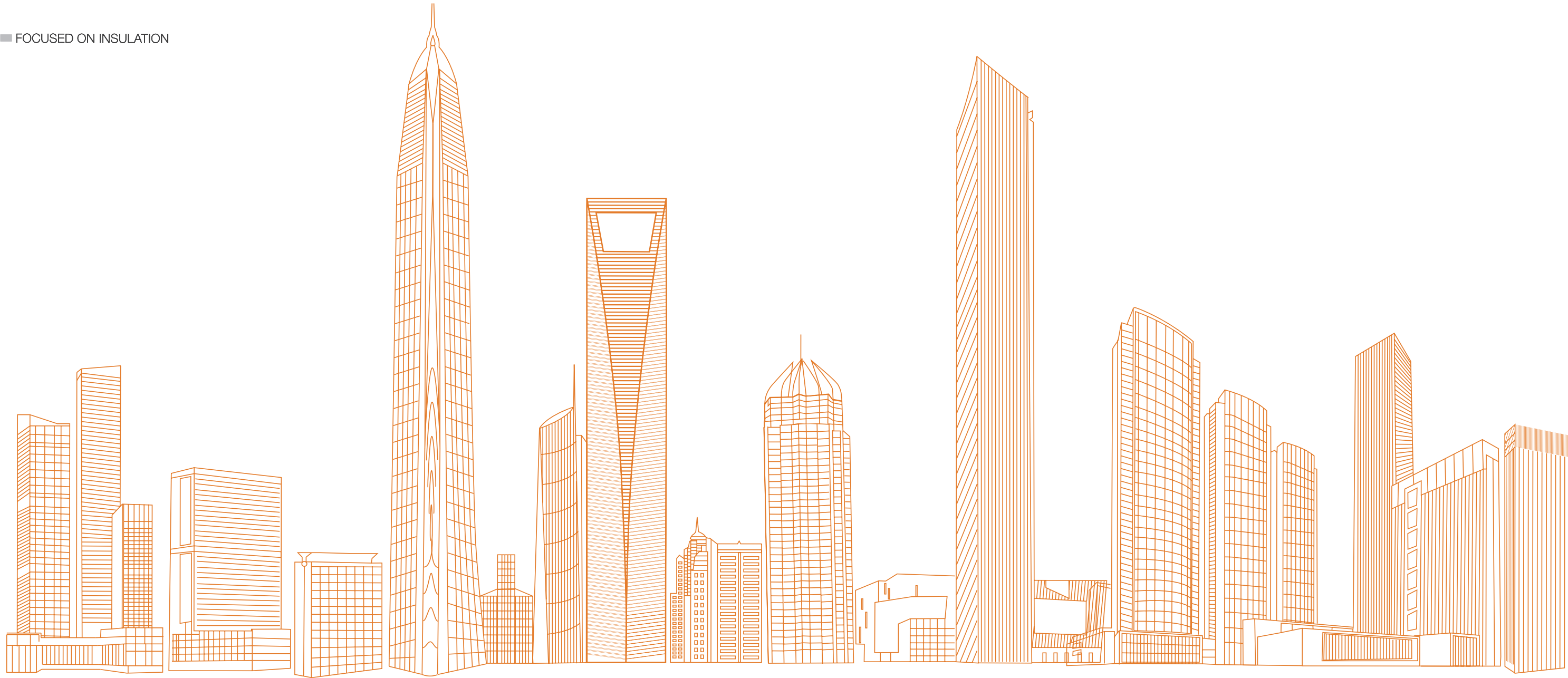
[www.kwiweb.com](http://www.kwiweb.com)

[www.cnjinwei.en.alibaba.com](http://www.cnjinwei.en.alibaba.com)

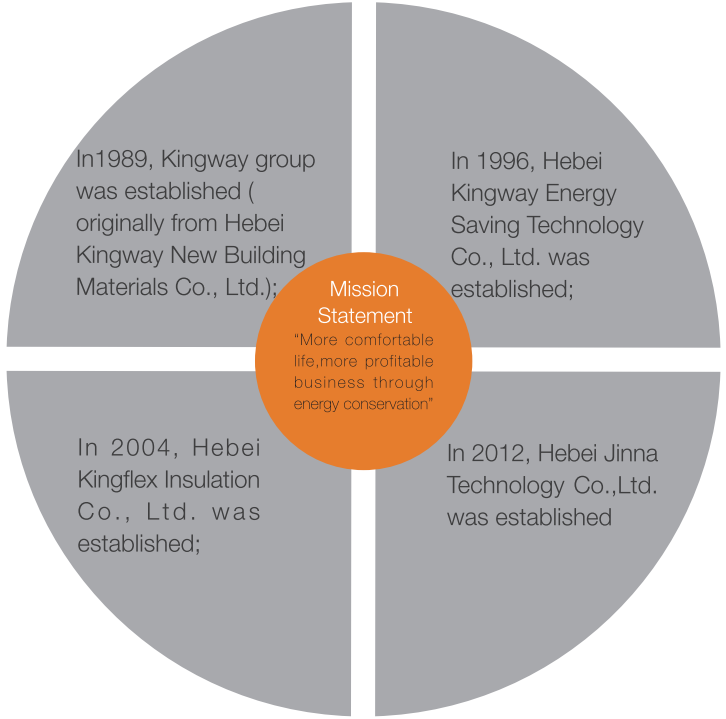
Plant Address:

Liugezhuang Industrial Area, Dacheng County, Hebei Province, China

High-Performance Rubber Insulation Products



Growth in the construction industry and many other industrial segments, combined with concerns over rising energy costs and noise pollution, is fueling market demand for thermal insulation. With more than four decades of dedicated experience in manufacturing and applications, Kingflex Insulation Company is riding on top of the wave.



Over four decades, Kingflex Insulation Company has grown from a single manufacturing plant in China to a global organization with product installation in over 50 countries. From the National Stadium in Beijing, to the high rises in New York, Singapore and Dubai, people around the world are enjoying the quality products from Kingflex.

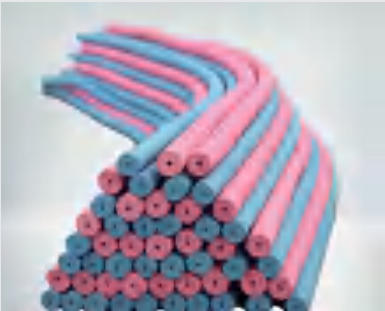
In operation, the company takes energy saving and consumption reduction as the core concept. We provide the solutions regarding the insulation by means of consultation , research and development production, installation guidance, and post-sale service to lead the development of global building materials industry.

COMPANY  
INTRODUCTION



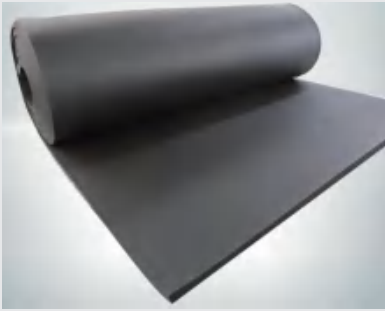
**NORMAL SERIES**

High density, low thermal conductivity, closed cell elastomeric tube in black color.  
Used to reduce long-term heat gain and energy loss. Fire-free to prevent potential air-quality problems. Closed-cell insulation to provide a continuous barrier to water vapor.



**CUSTOMIZED SERIES**

Variety color available as per customers' requirement. Better to distinguish hot water pipe and cold water pipe. More pleasant to look at than traditional black color.



**NORMAL SERIES**

High density, low thermal conductivity, closed Cell elastomeric sheet roll in Black color. Mainly used to conserve energy and prevent condensation on large pipes, ducts, vessels, tanks and equipment.



**CUSTOMIZED SERIES**

Variety color available as per customers' requirement. Better to distinguish hot water pipe and cold water pipe. More pleasant to look at than traditional black color.



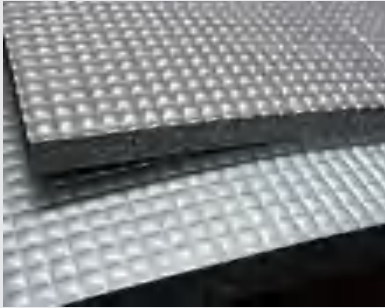
**ALUMINUM FOIL FACING**

Faced with aluminum foil to reach better performance. And protect the insulation against damage from UV rays, moisture and chemical erosions.



**COIL TUBE**

Coil tube designed for labor saving and to minimize waste. Meeting all necessary requirement in terms of dimension, structure (flexible and easy to install) cleanliness and cost effective. It is kind of insulation material with fireproof, soundproof and shockproof performance.



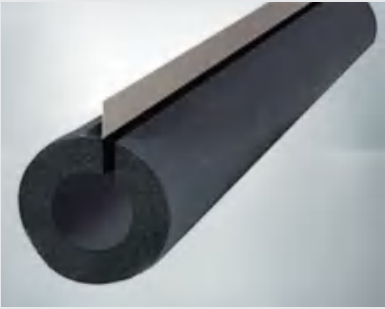
**ALUMINUM FOIL FACING**

Faced with aluminum foil to reach better performance. Time saving in comparison with metal jacketting. Reduce risk of galvanic corrosion. Excellent mechanical, UV and weather resistance.



**SELF-ADHESIVE FACING**

Faced with self-adhesive kraft paper for easy installation, labor savings.



**FABRICATION SERIES**

Pre-slit with a factory-applied pressure sensitive modified-acrylic adhesive on the seam surface and flexible PVC overlap tape with acrylic adhesive for doubled seam security.



**ALUMINUM FOIL TAPE**

Designed for sealing joints and seams of foil jacketting in air-conditioning and electronic field. Made from malleable aluminum foil with crossed linked acrylic. Specification : 30m×50mm×3μm



**RUBBER FOAM TAPE**

Excellent performance black rubber foam adhesive insulation tape. ideal for wrapping hot or cold pipings and fittings. Adheres firmly to all metals. Specification: 10m×50mm×3mm and 10m×50mm×5mm.

**TUBE  
PRODUCTS**



ASTM-E84



BS476



BV APPROVED



DIN5510



GREEN PRODUCT



REACH



UL94



RoHS



UKAS



CE

**SHEET AND  
ROLL PRODUCTS**

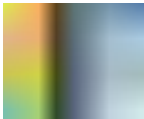




TECHNICAL DATA

Property	Unit	Value	Test Method
Temperature range	° C	(-50 - 110)	GB/T 17794-1999
Density range	Kg/m3	45-65Kg/m3	ASTM D1667
Water vapor permeability	Kg/(m.s.pa)	≤ 0.91 × 10 <sup>-3</sup>	DIN 52 615 BS 4370
μ	-	≥ 10000	Part 2 1973
Thermal Conductivity	W/(m.k)	≤ 0.030 (-20° C)	ASTM C 518
		≤ 0.032 (0° C)	
		≤ 0.036 (40° C)	
Fire Rating	-	Class 0 & Class 1	BS 476 Part 6 part 7
Flame Spread and Smoke Developed Index		25/50	ASTM E 84
Oxygen Index		≥ 36	GB/T 2406,ISO4589
Water Absorption,%by Volume	%	20%	ASTM C 209
Dimension Stability		≤ 5	ASTM C534
Fungi resistance		Good	ASTM 21
Ozone resistance	-	Good	GB/T 7762-1987
Resistance to U.V. and weather		Good	ASTM G23

PERFORMANCE ADVANTAGES



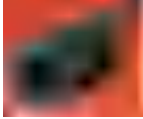
Good Thermal Insulation Property

Suitable apparent density and stable closed cell structure create the lowest and the most stable thermal conductivity. It (λ ) can reach 0.030 w/m.k at -20℃ .



Excellent Water Vapor Permeability

Perfect closed cell structure brings low water absorption and high moisture resistance factor-μ. μ value fully promote up to 10000 in the industry-leading.



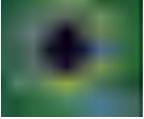
Safety

Passed test of BS 476 part 6 part 7 (Class 0). It has achieved the highest fire certification of BS standard. It can better control balance of the oxygen index and smoke density with foaming chemical reaction fully.



Easy Installation

Kingflex product has high tear strength. It can prevent surface damage. Meanwhile, compare with the high density material, Kingflex is more flexible, and easier to install. The joint is not easy to rebound and gap.



Environment Friendly

- Save Operating Cost
- Increase Process Efficiency
- Reduce Fire Risk
- Protect Workforce
- Improve Appearance of Equipment

TUBE SPECIFICATION

Tube		9mm • 3/8"		13mm • 1/2"		19mm • 3/4"		Tube		25mm • 1"		30mm • 1 1/4"		40mm • 1 5/8"	
ID Inches	ID (mm)	Wall*ID	PCS/CTN	Wall*ID	PCS/CTN	Wall*ID	PCS/CTN	ID Inches	ID (mm)	Wall*ID	PCS/CTN	Wall*ID	PCS/CTN	Wall*ID	PCS/CTN
1/4"	6	9*6	168	13*6	90	19*6	50	1/4	6	25*6	35				
3/8"	9	9*9	130	13*9	80	19*9	40	3/8	9	25*9	25				
1/2"	13	9*13	115	13*13	65	19*13	40	1/2	13	25*13	25				
5/8"	16	9*16	90	13*16	60	19*16	35	5/8	16	25*16	20	30*16	16		
3/4"	19	9*19	76	13*19	45	19*19	30	3/4	19	25*19	20	30*19	12		
7/8"	22	9*22	70	13*22	40	19*22	30	7/8	22	25*22	20	30*22	12		
1 "	25	9*25	55	13*25	40	19*25	25	1	25	25*25	20	30*25	12		
1 1/8"	28	9*28	50	13*28	36	19*28	24	1 1/8	28	25*28	18	30*28	11		
1 1/4"	32	9*32	40	13*32	30	19*32	20	1 1/4	32	25*32	15	30*32	9		
1 3/8"	35	9*35	36	13*35	30	19*35	20	1 3/8	35	25*35	15	30*35	9		
1 1/2"	38	9*38	32	13*38	25	19*38	17	1 1/2	38	25*38	12	30*38	8		
1 5/8"	42	9*42	30	13*42	24	19*42	17	1 5/8	42	25*42	12	30*42	8		
1 3/4"	45	9*45	26	13*45	20	19*45	16	1 3/4	45	25*45	10	30*45	6		
1 7/8"	48	9*48	25	13*48	20	19*48	15	1 7/8	48	25*48	10	30*48	6	40*48	6
2 1/8"	54	9*54	25	13*54	20	19*54	15	2 1/8	54	25*54	9	30*54	5	40*54	4
2 1/4"	57			13*57	20	19*57	12	2 1/4	57	25*57	9	30*57	5	40*57	4
2 3/8"	60			13*60	18	19*60	12	2 3/8	60	25*60	9	30*60	5	40*60	4
2 5/8"	67			13*67	15	19*67	10	2 5/8	67	25*67	8	30*67	4	40*67	4
3 "	76			13*76	12	19*76	10	3	76	25*76	6	30*76	4	40*76	4
3 1/2"	89			13*89	10	19*89	10	3 1/2	89	25*89	6	30*89	4		
4 1/4"	108					19*108	8	4 1/4	108	25*108	6	30*108	3		
4 1/2"	114					19*114	8	4 1/2	114			30*114	2		

© Length Available 1.80m, 1.83m and 2.0m. Packing with carton box.

SHEET AND ROLL SPECIFICATION

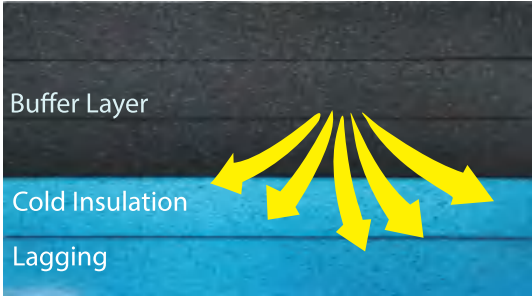
Thickness		Sheet 1 metre wide		Sheet 1.2 metre wide		Sheet 1.5 metre wide	
Inches	mm	Size(L × W)	m <sup>2</sup> /Roll	Size(L × W)	m <sup>2</sup> /Roll	Size(L × W)	m <sup>2</sup> /Roll
1/4"	6	30 × 1	30	30 × 1.2	36	30 × 1.5	45
3/8"	10	20 × 1	20	20 × 1.2	24	20 × 1.5	30
1/2"	13	15 × 1	15	15 × 1.2	18	15 × 1.5	22.5
3/4"	19	10 × 1	10	10 × 1.2	12	10 × 1.5	15
1"	25	8 × 1	8	8 × 1.2	9.6	8 × 1.5	12
1 1/4"	32	6 × 1	6	6 × 1.2	7.2	6 × 1.5	9
1 1/2"	40	5 × 1	5	5 × 1.2	6	5 × 1.5	7.5
2"	50	4 × 1	4	4 × 1.2	4.8	4 × 1.5	6

© The Packing can be plastic bag or carton.

TECHNICAL DATA

Physical Properties	Base Material		Standard
	Kingflex ULT	Kingflex LT	
Thermal Conductivity	(-100℃ , 0.028	(0℃ ,0.033, -50 )	ASTM C177
	-165℃ , 0.021)	(℃ , 0.028)	EN 12667
Density	60-80 kg/m3	40-60 kg/m3	ASTM D 1622
Recommend Operating Temperature	(-200℃ +125℃ )	(-50℃ +105℃ )	NA
Percentage of Close Area	> 95%	>95%	ASTM D 2856
Moisture Permeance Factor	NA	< 1.96 × 10g (m.s.Pa)	ASTM E96
Wet Resistance Factor μ	NA	>10000z	EN 12086
			EN 13469
Water Vapor Permeability Coefficient	NA	0.0039g/h.m2 (25mm thickness)	ASTM E96
PH	≥ 8.0	≥ 8.0	ASTM C871
Tensile Strength MPa	-100℃ , 0.30	0℃ , 0.15	ASTM D 1623
	-165℃ , 0.25	-40℃ , 0.218	
Compressive Strength MPa	(-100℃ , ≤ 0.37)	(-40℃ , ≤ 0.16)	ASTM D 1621

Performance for layers



- Excellent internal shock resistance.
- Extensive absorption and dispersion of external stresses in local positions
- Avoid material cracking due to stress concentration
- Avoid the cracking of hard foamed material caused by impact

Multi-layer composite structure



Temperature range -200℃ to +200℃ for LNG/cold pipeline or equipment application

Main raw material: ULT: polybutadiene polymer ;LT:NBR/PVC

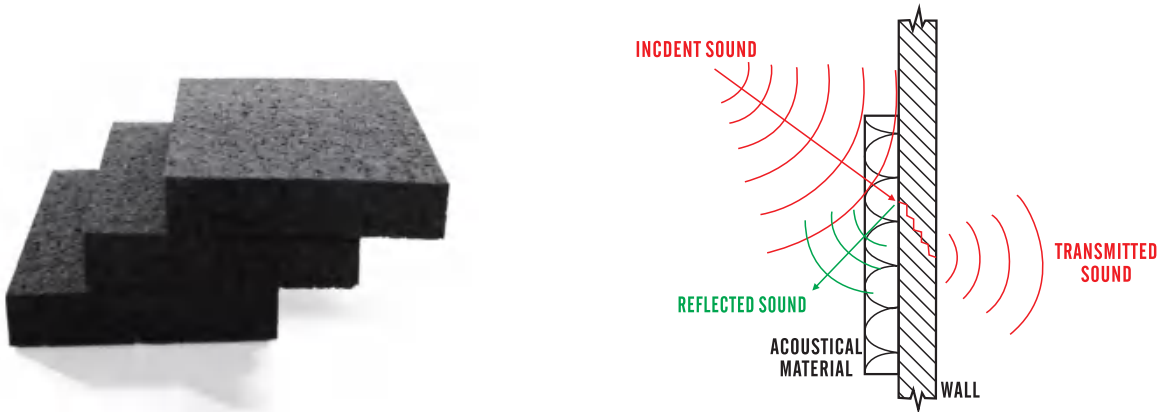
Color : ULT Blue ; LT Black

Application : LNG;large-scale cryogenic storage tanks;PetroChina, SINOPEC ethylene project, nitrogen plant;coal chemical industry...

ELASTOMERIC CRYOGENIC INSULATION

TECHNICAL DATA

Physical Properties	Low Density	High Density	Standard
Temperature Range	-20℃ ~ +85℃	-20℃ ~ +85℃	
Thermal Conductivity (Normal Atmospheric Temperature)	0.047 W/(m.K)	0.052 W/(m.K)	EN ISO 12667
Fire Resistance	Class 1	Class 1	BS476 Part 7
	V0	V0	UL 94
	Fireproof, Self-Extinguishing, No Drop, N0	Fireproof, Self-Extinguishing, No Drop, N0	
	Flame Propagation	Flame Propagation	
Density	≥ 160 KG/M3	≥ 240 KG/M3	-
Tensile Strength	60-90 kPa	90-150 kPa	ISO 1798
Stretch Rate	40-50%	60-80%	ISO 1798
Chemical Tolerance	Good	Good	-
Environmental Protection	No Fiber Dust	No Fiber Dust	-



SPECIFICATION

NO	Thickness	Width	Length	Density	Unit Packing	Size of Carton Box
1	6mm	*	1m	160KG/M3	8 PC/CTN	1030mmx1030mmx55mm
2	10mm	*	1m	160KG/M3	5 PC/CTN	1030mmx1030mmx55mm
3	15mm	*	1m	160KG/M3	4 PC/CTN	1030mmx1030mmx65mm
4	20mm	*	1m	160KG/M3	3 PC/CTN	1030mmx1030mmx65mm
5	25mm	*	1m	160KG/M3	2 PC/CTN	1030mmx1030mmx55mm
6	6mm	*	1m	240KG/M3	8 PC/CTN	1030mmx1030mmx55mm
7	10mm	*	1m	240KG/M3	5 PC/CTN	1030mmx1030mmx55mm
8	15mm	*	1m	240KG/M3	4 PC/CTN	1030mmx1030mmx65mm
9	20mm	*	1m	240KG/M3	3 PC/CTN	1030mmx1030mmx65mm
10	25mm	*	1m	240KG/M3	2 PC/CTN	1030mmx1030mmx55mm

Kingflex flexible sound absorbing insulation sheet is a kind of universal sound absorbing material with open cell structure, designed for different acoustic application.  
Raw material:synthetic rubber

Color: black

Application: HVAC air condition system, general machinery,power room in petroleum and gas system,heavy duty vehicles, and equipment insulation cover lining

FLEXIBLE SOUND INSULATION





## CONSTRUCTION CASES

Kingflex rubber insulation products application: ventilation pipe, large pipe facilities, tubing, HVAC, solar water heaters, freezers, dual temperature low pressure steam pipeline, pipeline, offshore and coastal facilities and ship industry, ships, locomotives etc.

Kingflex elastomeric cryogenic insulation application: natural gas LNG cold energy utilization, nitrogen factory, COAL-TO-OLEFINS, coal chemical MOT, transport ship LNG carrier inside, no fiber and no CFC and HCFC and other harmful substances, drilling platform pipeline, PetroChina and SINOPEC ethylene project, etc.