

ROOM SOUNDPROOFING

STANDARD SOLUTIONS BOOK

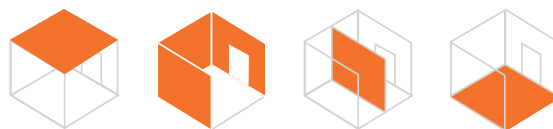
STANDARD SOLUTIONS BOOK FOR ROOM SOUNDPROOFING

The Acoustic Group company was founded in 1999, when a group of engineers came up with a product for additional soundproofing of walls and ceilings, unique in its acoustic characteristics, which came to be known as the "ZIPS panel system". The same year witnessed the decision regarding the start of business activities on development and promotion of innovative products in building acoustics, as well as solution for typical soundproofing issues in industrial and civil construction.

Presently, Acoustic Group company consists of:

- 14 offices and 4 production facilities,
- a set of small measurement chambers,
- patents for inventions and utility models.

This solutions catalogue presents typical soundproofing constructions with maximum acoustic efficiency. The proposed constructions have been successfully tested and have confirmed their high acoustic and performance characteristics with Acoustic Group's proprietary materials.



CHOOSING THE RIGHT SOUNDPROOFING

In our practice, most often, we face two different tasks. Accordingly, the action plan for the selection of soundproofing solutions in each of these cases will be different.

A

NO NOISE IN THE FINISHED ROOM

These are the cases where a potential client has a specific problem related to annoying noise. The main task is to determine what noise is bothering you, how it gets into the room and what solutions can be used to eliminate it. To find solutions yourself, use the hints below.

B

SOUNDPROOFING FOR THE FUTURE

No one is safe from noisy neighbors buying a new apartment, that's why it's worth taking care of future comfort. Therefore, at the refurbishment stage, "weak" zones are identified and soundproofing solutions are selected. To select solutions yourself, we recommend to get acquainted with real cases of soundproofing application, which are presented on page 87.

1 IDENTIFY THE NOISE TYPE

AIRBORNE NOISE

Noise that arises in the air. Barking dogs, switched on TV, speech, crying children and others.



IMPACT NOISE

Noise from stomping, falling objects, hitting the surface.



STRUCTURAL NOISE

Noise from a perforator, an elevator, and other engineering equipment, which is transmitted through the building's structural elements and utilities in the form of vibrations.



2 IDENTIFY THE NOISE INTENSITY

Two close in meaning words are often used in conversations: "sound" and "noise". Sound is a physical phenomenon caused by the oscillatory motion of the particles of the medium. Sound oscillations have a certain amplitude and frequency. So, a human is able to hear sounds

varying in amplitude by tens of millions of times. As for noise, it is a chaotic, discordant mixture of sounds that negatively affects the nervous system.

The frequencies perceived by our ear range from 16 to 20,000 Hz. Nature has granted us with the ability to hear both thunder and the slightest whisper of leaves. To evaluate such different sounds, the sound intensity level indicator L and special units of measurement - decibels (dB) are adopted.

Volume serves as a physiological characteristic of sound. Decrease in sound intensity level L by 10 dB is subjectively perceived as a volume reduction by a half, and a 5 dB decrease - as a volume reduction by a third.

The human body reacts to noise of different levels and frequency composition differently. In the range of 35-60 dBA, the reaction is individual (like "interferes - does not interfere").

Noise of 70-90 dBA levels leads to nervous disorder in case prolonged exposure, and with L of more than 100 dBA - to a decrement in hearing acuity of various degrees of severity, up to the development of complete deafness.

NOISE LEVELS

30 dB	Soft		Whisper, ticking of a table clock. Permissible maximum according to the standards for residential premises at night, from 11 p.m. to 7 a.m.
40 dB	Rather audible		Normal speech. Standard for residential premises during the day, from 7 a.m. to 11 p.m.
55 dB	Clearly audible		Conversation at a distance of 1 m. Upper standard for Class A office space
65 dB	Loudly		Loud conversation at a distance of 1 m
75 dB	Loudly		Scream, children's laughter at a distance of 1 m
90 dB	Very loudly		Loud scream, home cinema
105 dB	Extremely loudly		Orchestra, thunder, nightclub
130 dB	Pain threshold		Airplane at the start

*dBA - acoustic decibel. Noise measurement unit, taking into account human perception of sound.

3

IDENTIFY NOISE PATHS

DIRECT PATHS

Most often such ways are relevant to airborne noise that penetrates through adjacent surfaces (floor, ceiling, wall, partition).

INDIRECT PATHS

Most often such ways are relevant to impact and structural noise, which can penetrate from all sides, through ceilings and load-bearing structures.

4

IDENTIFY PRIORITY FACTORS

When dealing with noise, you need to remember that absolute soundproofing does not exist. Even after applying the most efficient and expensive soundproofing solutions, noise can remain.

Soundproofing should be considered as additional protection. The result will largely depend on the sound source volume level. The soundproofing construction can completely neutralize the sound at a certain volume, but the noise will reappear if the volume of the sound source is increased.

However, our experience shows that 50% of all applications for soundproofing services are caused by medium-intensity noise, so the problem can be completely eliminated.

The remaining 45% are problems with sounds of increased volume, and even in these cases, it is possible to significantly reduce annoying noises.

And only 5% of cases fail to find a solution to the problem.

Therefore, when choosing materials and solutions, we recommend relying on 3 factors:

① PRICE

② SPACE-WASTAGE

③ RESULTING EFFECT

There is a number of parameters for each construction in our catalogue designed to help you make the right choice:



thickness of construction



load on the wall

ΔR_w

ADDITIONAL* airborne noise insulation index

ΔL_{nw}

ADDITIONAL* impact noise insulation index



average material consumption per 1m2 and other

*Please note that, unlike many companies, we give exactly ΔR_w and ΔL_{nw} (ADDITIONAL sound insulation index), and not just R_w and L_w (sound insulation indices of a construction mounted on a reference brick wall). It is because we understand that in order to calculate the noise reduction and take the right decision, you will need to know exactly the improvement that our design provides.

5

ADDITIONAL BENEFITS

The main function of soundproofing materials and structures is to reduce the noise level in the room. But, at the same time, the use of certain materials can significantly reduce costs at other stages of refurbishment.

1 - LEVELING OF WALLS, FLOOR AND CEILING

The process of surfaces leveling is not only expensive, but also a time-consuming stage of refurbishment and construction work.

We have developed special solutions for uneven surfaces: ZIPS-Z4 for walls and ceilings, Shumoplast - for floors. Our materials allow to level small surface differences and perform installation without additional preparation, which significantly reduces the time of refurbishment work.

In the case when the wall or floor has large height differences, we recommend framed soundproofing structures. These are the structures with a distance from the existing wall, and the finish layer - AKU-Line board - is a good base for any decorative coatings.

2 - UTILITY LAYING

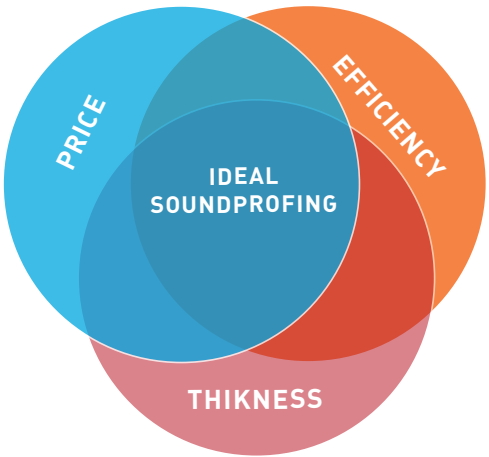
Soundproofing structures are ideal for laying utilities, but of course it is important to observe the main rule - utilities should not be rigidly fixed and touch elements of the structure.

3 - THERMAL INSULATION

Some materials that make up soundproofing structures have a heat-insulating effect, for example, by installing the "Soundproofing floor using Shumanet-Thermo" construction in your apartment, you provide yourself with floor thermal insulation, and your neighbors with silence.

4 - WATERPROOFING

The issue of waterproofing in the bathroom and WC is particularly relevant, but waterproofing in other rooms would also do well. Moreover, our range of soundproofing materials includes Shumanet-100Hydro. These are bitumen-based roll materials that work great against impact noise and provide reliable waterproofing, while observing simple installation rules.



On the next spread, you will find a summary table that will help you decide which soundproofing constructions are most suitable for you.

ROOM SOUNDPROOFING SOLUTIONS

WALL SOUNDPROOFING

	Thin Solutions	The highest soundproofing	Thickness/ effect	Leveling function	Possibility to hang shelves/ chandeliers without inserts	High-speed installation	Airborne noise insulation (speech, TV, radio, barking dogs, crying children)	Impact noise insulation (stomping, falling objects, impacts, steps)	Page no.
Frameless cladding with the use of ZIPS-III-Ultra sandwich-panels	+		+		+	+	ΔRw ≈ 18 dB		14
Frameless cladding with the use of sandwich-panels ZIPS-Vector	+				+	+	ΔRw ≈ 14 dB		16
Frameless cladding with the use of sandwich-panels ZIPS-Modul			+		+	+	ΔRw ≈ 18 dB		18
Frameless cladding with the use of sandwich-panels ZIPS-Cinema		+			+	+	ΔRw ≈ 21 dB		20
Frameless cladding with the use of sandwich-panels ZIPS-Z4	+		+	+	+	+	ΔRw ≈ 19 dB		22
Frameless cladding for thin walls and partitions with the use of ZIPS-Slim	+				+	+	ΔRw ≈ 10 dB		24
Frameless cladding for inner apartment walls made of AAC/GC with the use of Soundline-PGP Super	+				+	+	ΔRw ≈ 11 dB		26
Frame cladding with the use of hangs ULTRAKUSTIK			+	+	+	+	ΔRw ≈ 24 dB		30
Independent frame cladding on a 50 mm profile			+	+	+	+	ΔRw ≈ 25 dB		32

SOUNDPROOFING PARTITIONS

Soundproofing frame partition on a 50 mm profile				+	+	+	Rw ≈ 60 dB		36
Soundproofing frame partition on a 75 mm profile				+	+	+	Rw ≈ 62 dB		38

CEILING SOUNDPROOFING

Stretch ceiling filled with Shumanet-Thermo Eco sound-absorbing mat	+					+			42
Frameless cladding with the use of ZIPS-III-Ultra sandwich-panels	+				+	+	ΔRw ≈ 18 dB		44
Frameless cladding with the use of sandwich-panels ZIPS-Vector	+				+	+	ΔRw ≈ 14 dB		46
Frameless cladding with the use of sandwich-panels ZIPS-Modul					+	+	ΔRw ≈ 18 dB		48
Frameless cladding with the use of sandwich-panels ZIPS-Cinema		+			+	+	ΔRw ≈ 21 dB		50
Frameless cladding using ZIPS-Z4 sandwich-panels (for uneven ceilings)	+		+	+	+	+	ΔRw ≈ 19 dB		52
Frame soundproofing ceiling on ULTRAKUSTIK hangs (130 mm)		+	+	+	+	+	ΔRw ≈ 21 dB		54
Frame soundproofing ceiling on ULTRAKUSTIK hangs (200 mm)		+	+	+	+	+	ΔRw ≈ 23 dB		56

FLOOR SOUNDPROOFING

Water-Soundproofing floor using Shumanet-100Hydro	+							ΔLnw ≈ 24 dB	60
Soundproofing floor using Shumoplast			+	+			ΔRw ≈ 9 dB	ΔLnw ≈ 28 dB	62
Soundproofing floor using ZIPS-Floor Vector	+		+			+	ΔRw ≈ 8 dB	ΔLnw ≈ 31 dB	64
Soundproofing floor using ZIPS-Floor Modul			+			+	ΔRw ≈ 9 dB	ΔLnw ≈ 32 dB	66

TYPES OF SOUNDPROOFING CONSTRUCTIONS

FRAME CONSTRUCTIONS

- + Solve 2 tasks: soundproofing and leveling*
- + The cost of such structures is lower than that of frameless ones, but provided that independent cladding is arranged (without attaching the frame to the wall with vibration hangs)
- + There is a possibility to provide embedded parts (usually made from a sheet of plywood) and hang heavy cabinets, shelves, etc
- + No restrictions on wall requirements (strength, thickness, etc.)
- + Allow to hide a large amount of wiring and utilities

- Installation of the construction is more complicated and time-consuming
- The minimum possible thickness of the construction is greater than that of frameless systems
- In the case of independent cladding installation (without attaching with hangs to the wall), there are height restrictions

*There is already a ZIPS-Z4 panel among frameless structures, which is also capable of leveling surface differences up to 50 mm.



IN WHAT CASES SHOULD YOU CHOOSE FRAME SYSTEMS?

- 1 when it is planned to hang heavy cabinets or shelves
- 2 when you want to reduce the cost while maintaining the maximum efficiency of the solution (for the case of independent claddings) and are ready to sacrifice the usable area of the room
- 3 when you are not sure about the wall strength

FRAMELESS CONSTRUCTIONS

- + Install directly to the wall
- + Complete solution
- + Thinner than frame constructions, save usable room space
- + Can be quickly and easily installed, which significantly reduces the likelihood of critical soundproofing errors
- Relatively high price
- Surface leveling required prior to installation
- There are restrictions on the load on the wall



IN WHAT CASES SHOULD YOU CHOOSE A FRAMELESS SYSTEM?

- 1 when it is planned to hang heavy cabinets or shelves
- 2 when you want to save as much of usable space as possible
- 3 when you are considering self-installation



SOLUTIONS FOR **WALLS SOUNDPROOFING**



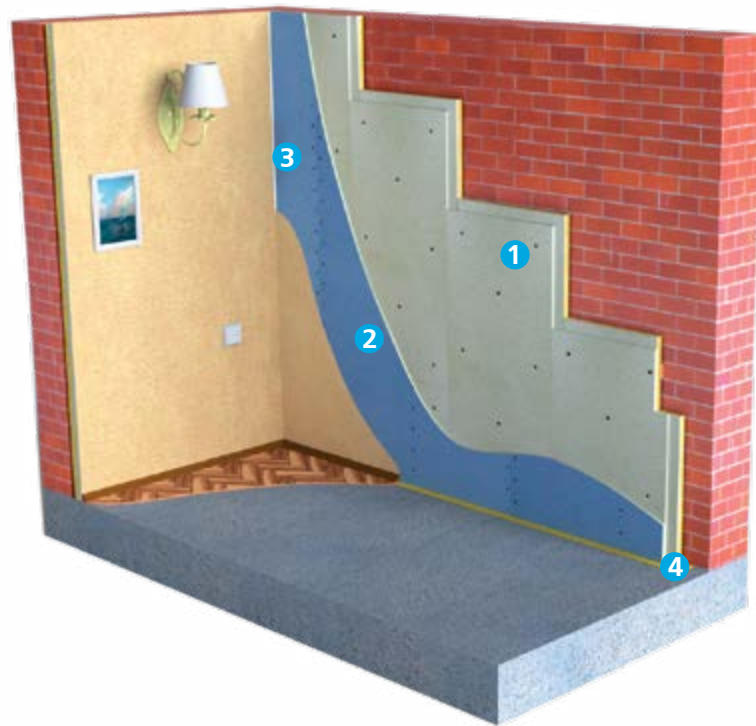


WALL SOUNDPROOFING

FRAMELESS CLADDING USING ZIPS SANDWICH-PANELS

ZIPS-III-ULTRA

MAX LOAD WITHOUT INSERTS 35 kg/r.m. CONSTRUCTION THICKNESS 55 mm



When applied?

- If you need maximum effect with the smallest thickness.
- Saves from noises of average volume - conversations, TV, barking dogs, crying children.
- The construction is recommended for AKU-Line, brick and concrete walls, partitions, as well as reinforced concrete floors.

ZIPS-III-ULTRA 3rd Generation Frameless Soundproofing System

- Fireproof material
- Certified
- Has a European certificate
- Passed acoustic tests

$\Delta R_w \approx 18$ dB additional airborne noise insulation

$R_w \approx 68$ dB airborne noise insulation index for the entire construction when mounted on a 120 mm thick sand-lime brick wall



- 1 ZIPS-III-Ultra sandwich-panel 1200x600x42 mm with a mounting kit
average consumption per 1 m² = 1.5 pcs.



- 2 AKU-Line plasterboard sheet 2000 x 1200 x 12,5 mm
average consumption per 1 m² = 0.42 pcs.



- 3 Vibrostack-M 100 Tape vibration damping spacer 290 ml cartridge
average consumption per 1 m² = 0.4 pcs.



- 4 Vibrostack-M 100 Tape vibration damping spacer roll 30m width 100mm thickness 4 mm (3 m²)
average consumption per 1 m² = 0.73 pcs.



Approximate cost of the construction, based on m²

€/m²

INSTALLATION MANUAL

ZIPS-III-Ultra panels are attached to the wall only through the existing vibration units using plastic dowels.

If the panel is installed as a whole (without cutting) on an insulated wall, then installation is carried out using only six attachment points, the central attachment points are not used.

The ends of the sandwich-panels must adjoin the side walls and the ceiling through two layers of Vibrostack-M 100 Tape vibration damping spacer. The tape is glued and fixed with Vibrostack.

The head of the screw should be screwed into the vibration unit no deeper than 1-2 mm from the level of the front side of the panel.

If the panel is cut, then all available attachment points are used for installation. Cuttings less than 250 mm are not used in the installation.

Upon completion of installation, the joints between the sandwich-panels are treated with Vibrostack. The finishing layer of AKU-Line plasterboard sheets 12.5 mm thick is fixed to the resulting surface. Sheets must adjoin to the adjacent surfaces through 2 layers of Vibrostack-M 100 Tape vibration damping spacer as well.

Excessively protruding Vibrostack-M 100 Tape is cut flush with the finishing layer of AKU-Line plasterboard sheets. Seams are filled with Vibrostack vibroacoustic silicone sealant.



WALL SOUNDPROOFING

FRAMELESS CLADDING USING ZIPS SANDWICH-PANELS

ZIPS-VECTOR

MAX LOAD WITHOUT INSERTS 35 kg/r.m. CONSTRUCTION THICKNESS 53 mm



When applied?

- When you need to get an acceptable result with a small thickness.
- Saves from noises of average volume - conversations, TV, barking dogs, crying children.
- The construction is recommended for AKU-Line, brick and concrete walls, partitions, as well as reinforced concrete floors.

ZIPS-VECTOR

initial level soundproofing frameless system



Fireproof material



Certified



Has a European certificate



Passed acoustic tests

$\Delta R_w \approx 14$ dB

additional airborne noise insulation

$R_w \approx 64$ dB

airborne noise insulation index for the entire construction when mounted on a 120 mm thick sand-lime brick wall



INSTALLATION MANUAL

ZIPS-Vector panels are attached to the wall only through the existing vibration units using plastic dowels.

If the panel is installed as a whole (without cutting) on an insulated wall, then installation is carried out using only six attachment points, the central attachment points are not used.

The ends of the sandwich-panels must adjoin the side walls and the ceiling through two layers of Vibrostak-M 100 Tape vibration damping spacer. The tape is glued and fixed with Vibroseal.

The head of the screw should be screwed into the vibration unit no deeper than 1-2 mm from the level of the front side of the panel.

If the panel is cut, then all available attachment points are used for installation. Cuttings less than 250 mm are not used in the installation.

Upon completion of installation, the joints between the sandwich-panels are treated with Vibroseal. The finishing layer of AKU-Line plasterboard sheets 12.5 mm thick is fixed to the resulting surface. Sheets must adjoin to the adjacent surfaces through 2 layers of Vibrostak-M 100 Tape vibration insulating spacer as well.

Excessively protruding Vibrostak-M 100 Tape is cut flush with the finishing layer of AKU-Line plasterboard sheets. Seams are filled with Vibroseal vibroacoustic silicone sealant.



- 1 ZIPS-Vector sandwich-panel 1200x600x40 mm with a mounting kit
average consumption per 1 m² = 1.5 pcs.



- 2 AKU-Line plasterboard sheet 2000 x 1200 x 12,5 mm
average consumption per 1 m² = 0.42 pcs.



- 3 Vibroseal silicone neutral sealant 290 ml cartridge
average consumption per 1 m² = 0.4 pcs.



- 4 Vibrostak-M 100 Tape vibration damping spacer roll 30m width 100mm thickness 4 mm (3 m²)
average consumption per 1 m² = 0.73 pcs.



Approximate cost of the construction, based on m²

€/m²



WALL SOUNDPROOFING

FRAMELESS CLADDING USING ZIPS SANDWICH-PANELS

ZIPS-MODUL

MAX LOAD WITHOUT INSERTS 35 kg/r.m. CONSTRUCTION THICKNESS 83 mm



When applied?

- If the noise of medium volume from conversations, TV, barking dogs and other household sources interferes.
- The construction is recommended for AKU-Line, brick and concrete walls, partitions, as well as reinforced concrete floors.

ZIPS-Modul

basic level soundproofing frameless system



Fireproof material



Certified



Has a European certificate



Passed acoustic tests

$\Delta R_w \approx 18$ dB additional airborne noise insulation

$R_w \approx 68$ dB airborne noise insulation index for the entire construction when mounted on a 120 mm thick sand-lime brick wall



- 1 ZIPS-Modul sandwich-panel 1200x600x70 mm with a mounting kit
average consumption per 1 m² = 1.5 pcs.



- 2 AKU-Line plasterboard sheet 2000 x 1200 x 12,5 mm
average consumption per 1 m² = 0.42 pcs.



- 3 Vibro seal silicone neutral sealant 290 ml cartridge
average consumption per 1 m² = 0.4 pcs.



- 4 Vibrostack-M 100 Tape vibration damping spacer roll 30m width 100mm thickness 4 mm (3 m²)
average consumption per 1 m² = 0.73 pcs.



Approximate cost of the construction, based on m²

€/m²



INSTALLATION MANUAL

ZIPS-Modul panels are attached to the wall only through the existing vibration units using plastic dowels.

If the panel is installed as a whole (without cutting) on an insulated wall, then installation is carried out using only six attachment points, the central attachment points are not used.

The ends of the sandwich-panels must adjoin the side walls and the ceiling through two layers of Vibrostak-M 100 Tape vibration damping spacer. The tape is glued and fixed with Vibro seal

The head of the screw should be screwed into the vibration unit no deeper than 1-2 mm from the level of the front side of the panel.

If the panel is cut, then all available attachment points are used for installation. Cuttings less than 250 mm are not used in the installation.

Upon completion of installation, the joints between the sandwich-panels are treated with Vibro seal sealant. The finishing layer of AKU-Line plasterboard sheets 12.5 mm thick is fixed to the resulting surface. Sheets must adjoin to the adjacent surfaces through 2 layers of Vibrostak-M 100 Tape vibration damping spacer as well.

Excessively protruding Vibrostak-M 100 Tape is cut flush with the finishing layer of AKU-Line plasterboard sheets. Seams are filled with Vibro seal vibroacoustic silicone sealant.



WALL SOUNDPROOFING

FRAMELESS CLADDING USING ZIPS SANDWICH-PANELS

ZIPS-CINEMA

MAX LOAD WITHOUT INSERTS 35 kg/r.m. CONSTRUCTION THICKNESS 133 mm



When applied?

- If the noise from conversations, TV, home theater or a barking dog is so strong that maximum efficiency is required.
- The construction is recommended for AKU-Line, brick and concrete walls, partitions, as well as reinforced concrete floors.

ZIPS-Cinema

high level soundproofing frameless system



Fireproof material



Certified



Has a European certificate



Passed acoustic tests

$\Delta R_w \approx 21$ dB additional airborne noise insulation

$R_w \approx 72$ dB airborne noise insulation index for the entire construction when mounted on a 120 mm thick sand-lime brick wall



INSTALLATION MANUAL



- 1 ZIPs-Cinema sandwich-panel 1200x600x120 mm with a mounting kit
average consumption per 1 m² = 1.5 pcs.



- 2 AKU-Line plasterboard sheet 2000 x 1200 x 12,5 mm
average consumption per 1 m² = 0.42 pcs.



- 3 Vibrostack-M 150 Tape silicone neutral sealant 290 ml cartridge
average consumption per 1 m² = 0.4 pcs.



- 4 Vibrostack-M 150 Tape vibration damping spacer roll 30m width 150mm thickness 4 mm (3 m²)
average consumption per 1 m² = 0.73 pcs.



Approximate cost of the construction, based on m²

€/m²

ZIPs-Cinema panels are attached to the wall only through the existing vibration units using plastic dowels.

If the panel is installed as a whole (without cutting) on an insulated wall, then installation is carried out using only six attachment points, the central attachment points are not used.

The ends of the sandwich-panels must adjoin the side walls and the ceiling through two layers of Vibrostak-M 150 Tape vibration damping spacer. The tape is glued and fixed with Vibrostack-M 150 Tape vibration damping spacer.

The head of the screw should be screwed into the vibration unit no deeper than 1-2 mm from the level of the front side of the panel.

If the panel is cut, then all available attachment points are used for installation. Cuttings less than 250 mm are not used in the installation.

Upon completion of installation, the joints between the sandwich-panels are treated with Vibrostack-M 150 Tape vibration damping spacer. The finishing layer AKU-Line plasterboard sheets 12.5 mm thick is fixed to the resulting surface. Sheets must adjoin to the adjacent surfaces through 2 layers of Vibrostak-M 150 Tape vibration damping spacer as well.

Excessively protruding Vibrostak-M 150 Tape is cut flush with the finishing layer of AKU-Line plasterboard sheets. Seams are filled with Vibrostack-M 150 Tape vibration damping spacer.



WALL SOUNDPROOFING

FRAMELESS CLADDING USING ZIPS SANDWICH-PANELS

ZIPS-Z4

FOR ROUGH WALLS!

MAX LOAD WITHOUT INSERTS  35 kg/r.m. CONSTRUCTION THICKNESS  55 mm



When applied?

- When the wall on which installation is to be performed is not leveled.
- Saves from noises of average volume - conversations, TV, barking dogs, crying children.

The maximum surface roughness available for leveling with ZIPS-Z4 system is 50 mm.

ZIPS-Z4

4rd generation soundproofing frameless system



Fireproof material



Certified



Has a European certificate



Passed acoustic tests

$\Delta R_w \approx 19$ dB
additional
airborne noise
insulation

$R_w \approx 69$ dB
airborne noise insulation
index for the entire
construction when
mounted on a 120 mm
thick sand-lime brick
wall



INSTALLATION MANUAL

ZIPS-Z4 panels are attached to the wall only through the existing vibration units using plastic dowels.

With the use of standard mounting kit, it is possible to level out differences and slopes of the surface up to 20 mm.

With the use of additional self-adhesive ST spacers, differences of up to 50 mm can be compensated. In this case it is also necessary to use universal self-tapping screws of greater length for fixing the panels.

To achieve the declared characteristics, the ZIPS-Z4 system must be mounted in strict accordance with the manual.



- 1 ZIPS-Z4 sandwich-panel 1200x600x120 mm with a mounting kit
average consumption per 1 m² = 1.5 pcs.



- 2 AKU-Line plasterboard sheet 2000 x 1200 x 12,5 mm
average consumption per 1 m² = 0.42 pcs.



- 3 Vibroseal silicone neutral sealant 290 ml cartridge
average consumption per 1 m² = 0.4 pcs.



- 4 Vibrostack-M 100 Tape vibration damping spacer roll 30m width 100mm thickness 4 mm (3 m²)
average consumption per 1 m² = 0.73 pcs.



Approximate cost of the construction, based on m²

€/m²



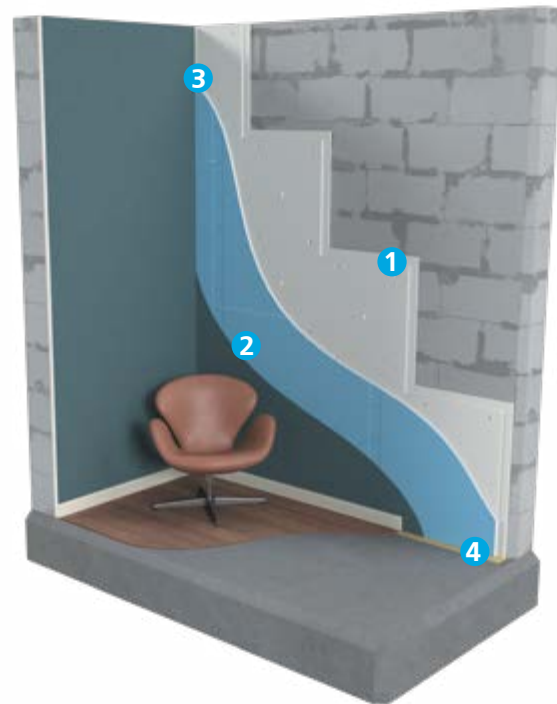
WALL SOUNDPROOFING

FRAMELESS CLADDING USING ZIPS SANDWICH-PANELS

ZIPS-SLIM

FOR INNER APARTMENT
WALLS MADE OF AAC/GC!

MAX LOAD WITHOUT INSERTS 35 kg/r.m. CONSTRUCTION THICKNESS 37,5 mm



When applied?

- When the wall on which installation is to be performed is made of 200 mm thick gas silicate blocks.
- Saves from noises of average volume - conversations, TV, barking dogs, crying children.

ZIPS-SLIM

ultra-thin frameless sound insulation for inner autoclaved aerated concrete apartment walls



Fireproof material



Certified



Has a European certificate



Passed acoustic tests

$\Delta R_w \approx 11$
dB

additional
airborne noise
insulation

$R_w \approx 55$
dB

airborne noise insulation
index for the entire
construction when
mounted on a partition
made of 200 mm (8 in)
thick D600 gas silicate
blocks



INSTALLATION MANUAL

ZIPS-SLIM panels are attached to the wall only through the existing vibration units using plastic dowels.

The ends of the sandwich-panels must adjoin the side walls and the ceiling through two layers of Vibrostak-M 100 Tape vibration damping spacer. The tape is glued and fixed with Vibroseal.

The head of the screw should be screwed into the vibration unit no deeper than 1-2 mm from the level of the front side of the panel.

If the panel is cut, then all available attachment points are used for installation. Cuttings less than 250 mm are not used in the installation.

Upon completion of installation, the joints between the sandwich-panels are treated with Vibroseal. The finishing layer of AKU-Line plasterboard sheets 12.5 mm thick is fixed to the resulting surface. Sheets must adjoin to the adjacent surfaces through 2 layers of Vibrostak-M 100 Tape vibration insulating spacer as well.

Excessively protruding Vibrostak-M 100 Tape is cut flush with the finishing layer of AKU-Line plasterboard sheets. Seams are filled with Vibroseal vibroacoustic silicone sealant.



- 1 ZIPS-SLIM sandwich-panel 1200x600x25 mm with a mounting kit
average consumption per 1 m² = 1.5 pcs.



- 2 AKU-Line plasterboard sheet 2000 x 1200 x 12,5 mm
average consumption per 1 m² = 0.42 pcs.



- 3 Vibroseal silicone neutral sealant 290 ml cartridge
average consumption per 1 m² = 0.4 pcs.



- 4 Vibrostak-M 100 Tape vibration damping spacer roll 30m width 100mm thickness 4 mm (3 m²)
average consumption per 1 m² = 0.73 pcs.



Approximate cost of the construction, based on m²

€/m²



WALL SOUNDPROOFING

FRAMELESS CLADDING FOR THIN WALLS AND PARTITIONS (< 100 MM)

Soundline-PGP Super

MAX LOAD WITHOUT INSERTS 35 kg/r.m. CONSTRUCTION THICKNESS 23 mm



When applied?

- To increase the sound insulation of interior partitions made of tongue-and-groove AKU-Line boards and aerated concrete with a thickness of not more than 100 mm.

Soundline-PGP Super

Soundproofing panel for thin walls and partitions



Fireproof material



Certified



Passed acoustic tests

$\Delta R_w \approx 10$ dB
additional
airborne noise
insulation

$R_w \approx 46$ dB
airborne noise insulation
index of the entire con-
struction



- Soundline-PGP Super panel 1200x600x23 mm
average consumption per 1 m² = 1.5 pcs.



Approximate
cost of the
construction,
based on m²

€/m²

IMPORTANT! The partition is sheathed with Soundline-PGP Super material on one side only.

Sheathing on both sides is devoid of practical meaning - the effect of additional soundproofing is significantly manifested after one side sheathing and does not increase when a layer is added on the back side of the partition!

INSTALLATION MANUAL

Soundline-PGP Super panels are mounted only on one side of a thin partition 80-100 mm thick.

Each panel has 8 attachment points to secure it to the surface. It's more convenient to install panels from the bottom-upwards, from left to right. For the first panel, the ridges are cut along the short and long sides, for the next panels of the first row - only along the long side.

Panels are joined together by means of a tongue-and-groove connection. Tongue-and-groove joints are additionally tightened together with self-tapping screws for AKU-Line plasterboards 3x25 mm with a pitch of 150 mm.

If the panel is completely placed on the wall surface, its installation is carried out using only six fasteners (central attachment points are not used). If the panel is to be cut, all available attachment points are used.



FREQUENTLY ASKED

FRAMELESS CLADDING USING ZIPS SANDWICH-PANELS

What are the constraints for the use of ZIPS panels?

The only significant constraint for the use of ZIPS panels is that the soundproofed surface must be flat. It means that, if necessary, the surface must be leveled before ZIPS installation. It is also important to take into account the bearing capacity of the wall/ceiling.

Is it possible to hang something on a wall sheathed with ZIPS?

Yes, it's possible. If it's about a picture or a small shelf - no problem at all. If you want to hang something really heavy, you will need to use embedded parts during installation. In this regard, it is better to consult with specialists in advance.

Will I be able to mount ZIPS myself in my apartment?

Sure. However, most likely you will need an assistant. It's quite hard to hold the panel and screw it on at the same time. This is especially critical when working on the soundproofing of the ceiling.

You say that ZIPS is the thinnest soundproofing, but I have seen advertisements with materials that are much thinner!

Unfortunately, many dishonest sellers mislead consumers. And no, most of the time they don't lie. They just keep something back :-)

Remember the fairy tale about stone soup? To the stone there, a very little more was needed, just a little bit of additional ingredients - cereals, salt and oil. So the situation is the same here. Those very thin materials are usually just a part of the soundproofing construction that you will need to construct to achieve a real result.

For example, weighted vinyl glued to the wall will not give any significant effect. It is used ONLY as part of a sandwich in frame soundproofing structures.

In some cases, it is possible to significantly increase the sound insulation of walls using triplex solutions with a thickness of about 25 mm. However, this is only possible for walls with extremely poor initial soundproofing. The total soundproofing index will not be very high. But you will get quite a tangible effect due to the poor base.

We can offer you such solutions as well. But the possibility of their applicability in your particular case should be discussed with acoustic engineers.



QUESTIONS ABOUT ZIPS

FRAMELESS CLADDING USING ZIPS SANDWICH-PANELS

What will be needed for the arrangement of soundproofing cladding besides ZIPS panels?

ZIPS panels are attached directly to the surface being insulated. All necessary fasteners are included in the kit. But you still will need to buy some things.

To improve soundproofing characteristics, as well as to increase the strength of the cladding, ZIPS-panels are sheathed with specialized weighted AKU-Line plasterboard. In order to prevent transmission of noise to the front surface of the panels along the junctions, it will be necessary to lay a Vibrostack-M 100 Tape M vibration damping spacer around the perimeter. Seams at the joints are filled with Vibroseal vibroacoustic insulating sealant.

Thus, in addition to ZIPS panels, you will need AKU-Line plasterboard and self-tapping screws for their attachment, as well as specialized accessories: Vibrostack-M 100 Tape M vibration damping spacer and Vibroseal vibroacoustic sealant. Our managers will help you calculate the required amount of materials and the budget.

Is it enough to insulate one wall or is it necessary to soundproof all the walls?

It happens that after soundproofing that very wall, the noise does not disappear completely, although it gets quieter. This is due to the fact that sound waves are transmitted to adjacent surfaces through the joints, and you hear noise that comes from other walls, from the ceiling, from the floor.

The best soundproofing is soundproofing according to the "room in a room" principle, when absolutely all surfaces (walls, floor, ceiling) are soundproofed. However, this does not mean that the soundproofing of a single wall will not have an effect. Usually the noise is reduced significantly.

At the same time, if it's really important for you to achieve an absolute result, we strongly recommend you consult with an acoustic engineer before starting work.



WALL SOUNDPROOFING

FRAME CLADDING USING VERSALITE VIBROINSULATING HANG

ULTRAKUSTIK

MAX LOAD WITHOUT INSERTS 35 kg/r.m. CONSTRUCTION THICKNESS 90 mm MAX ALLOWABLE HEIGHT 8 m



When applied?

- When you need a smooth wall with maximum rigidity, while big noise from conversations, TV, a roding dog or crying children interferes.
- Mounted on a soundproofing floor and suspended soundproofing ceiling.

ULTRAKUSTIK versalite vibroinsulation hang

- Sylodyn® vibration insulating element
- Anodized
- "Grower effect"
- Service life over 30 years
- Carrying capacity 25 kg
- Works well across the entire frequency range (domestic noise)

$\Delta R_w \approx 24$ dB additional airborne noise insulation

$R_w \approx 75$ dB airborne noise insulation index for the entire construction when mounted on a 120 mm thick sand-lime brick wall



INSTALLATION MANUAL

PP 60/27 metal profiles are fixed to the insulated wall with the help of special ULTRAKUSTIK vibration insulating hangs. Vibration insulating hangs are installed with a pitch of not more than every 1.5 running meters of the stud, but not less than 3 pieces with a profile length of up to 3 meters.

Mount the hangs at a distance of no more than 150 mm from the edge of the profile. PPN 28/27 metal profiles are fixed to the enclosing structures of the floor, ceiling and side walls through two layers of Vibrostack-M 100 Tape vibration damping spacer.

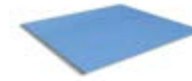
Soundline-dB and AKU-Line plasterboardsheet cladding materials are installed to the frame with a stagger between joints. Upon completion of soundproofing frame cladding installation, the excess of protruding Vibrostack-M 100 Tape tape is cut off and the resulting joint is filled with Vibroseal.



- 1 ULTRAKUSTIK, versalite vibroinsulation hang
average consumption per 1 m² = 2.2 pcs.



- 2 Soundline-dB, GFB sheet 1200x1200x16.5 mm
average consumption per 1 m² = 0.7 pcs.



- 3 AKU-Line plasterboard, sheet 2000 x 1200 x 12,5 mm
average consumption per 1 m² = 0.42 pcs.



- 4 Shumanet-ECO, glass-fiber slab plate 1200x600x50 mm
average consumption per 1 m² = 0.34 pack.



- 5 Gyproc-Standard Profile PP 60/27 length 3 r.m.
average consumption per 1 m² = 0.84 pcs.



- 6 Gyproc-Standard Profile PPN 28/27 length 3 r.m.
average consumption per 1 m² = 0.33 pcs.



- 7 Vibroseal, silicone neutral sealant 290 ml cartridge
average consumption per 1 m² = 0.4 pcs.



- 8 Vibrostack-M 100 Tape, vibration damping spacer roll 30m, width 100mm thickness 4 mm (3 m²)
average consumption per 1 m² = 0.73 pcs.



Approximate cost of the construction, based on m²

€/m²

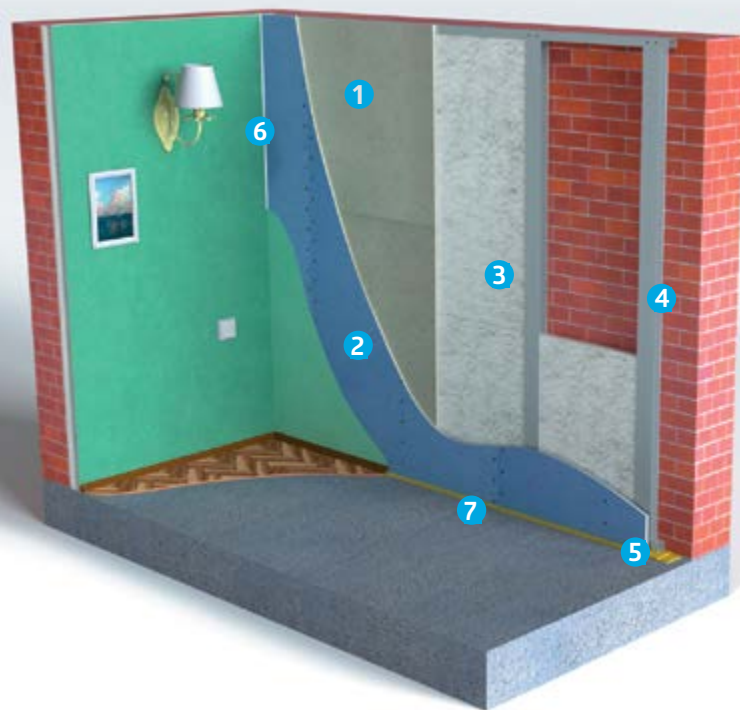


WALL SOUNDPROOFING

INDEPENDENT FRAME CLADDING

ON COUPLED PROFILE 50 MM

MAX LOAD WITHOUT INSERTS 35 kg/r.m. CONSTRUCTION THICKNESS 90 mm MAX ALLOWABLE HEIGHT 2.6 m



When applied?

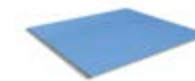
- When you need to level the wall and do not want to deal with wet processes, but when the noise of medium volume interferes: conversations, TV, barking dog.
- To achieve the maximum effect, it is mounted on soundproofing bases: "floating" floor, soundproofing ceiling.

$\Delta R_w \approx 25$ dB additional airborne noise insulation

$R_w \approx 76$ dB airborne noise insulation index for the entire construction when mounted on a 120 mm thick sand-lime brick wall



- 1 Soundline-dB, GFB sheet 1200x1200x16.5 mm
average consumption per 1 m² = 0.7 pcs.



- 2 AKU-Line plasterboard sheet 2000 x 1200 x 12,5 mm
average consumption per 1 m² = 0.42 pcs.



- 3 Shumanet-ECO, acoustic glasswool-fiber board
average consumption per 1 m² = 0.34 pack.



- 4 Gyproc-Standard Profile 50/40 length 3 r.m.
average consumption per 1 m² = 0.33 pcs.



- 5 Gyproc-Standard Profile 50/50 length 3 r.m.
average consumption per 1 m² = 1.34 pcs.



- 6 Vibroseal, silicone neutral sealant 290 ml cartridge
average consumption per 1 m² = 0.4 pcs.



- 7 Vibrostack-M 100 Tape, vibration damping spacer roll 30m, width 100mm thickness 4 mm [3 m²]
average consumption per 1 m² = 0.73 pcs.



Approximate cost of the construction, based on m²

€/m²



INSTALLATION MANUAL

The frame of the soundproofing cladding is mounted with a distance of 10 mm from the insulated wall. Elements of soundproofing cladding adjoin the enclosing structures exclusively through two layers of Vibrostack-M 100 Tape vibration-damping spacer.

Attention! Frame soundproofing cladding should not have rigid connections with the insulated wall. If the cladding is subject to a cantilever load (kitchen cabinets, heavy shelves), then the metal frame should be fixed to the insulated wall using vibration insulating hangs ULTRAKUSTIK.

Soundline-dB and AKU-Line plasterboard sheet cladding materials are installed to the frame with a stagger between joints. Upon completion of soundproofing framed cladding installation, the excess of protruding Vibrostack-M 100 Tape tape is cut off and the resulting joint is filled with Vibroseal.

SOLUTIONS FOR **SOUNDPROOFING PARTITIONS**



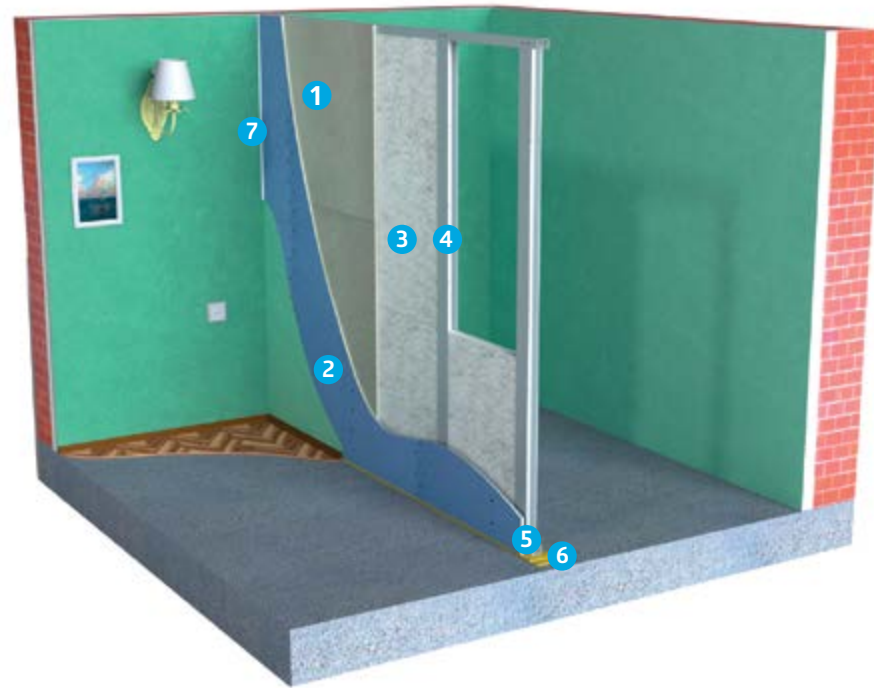


SOUNDPROOFING OF PARTITIONS

SOUNDPROOFING FRAME PARTITION

ON A 50 MM FRAME

MAX LOAD WITHOUT INSERTS 35 kg/r.m. CONSTRUCTION THICKNESS 108 mm MAX ALLOWABLE HEIGHT 4 m



$R_w \approx 60$
dB

airborne noise
insulation index of
the entire structure

When applied?

- Suitable as a reliable standard interior partition inside the apartment



1 Soundline-dB, GFB
sheet 1200x1200x16.5 mm
average consumption per 1 m² = 1.4 pcs.



2 AKU-Line plasterboard
sheet 2000 x 1200 x 12,5 mm
average consumption per 1 m² = 0.84 pcs.



3 Shumanet-ECO,
acoustic glasswool-fiber board
plate 1200x600x50 mm
average consumption per 1 m² = 0.34 pack.



4 Gyproc-Standard Profile 50/40
length 3 r.m.
average consumption per 1 m² = 1.24 pcs.



5 Gyproc-Standard Profile 50/50
length 3 r.m.
average consumption per 1 m² = 0.33 pcs.



6 Vibrostack-M 100 Tape,
vibration damping spacer
roll 30m, width 100mm
thickness 4 mm (3 m²)
average consumption per 1 m² = 0.73 pcs.



7 Vibroseal,
silicone neutral sealant
290 ml cartridge
average consumption per 1 m² = 0.8 pcs.



Approximate
cost of the
construction,
based on m²

€/m²



INSTALLATION MANUAL

The frame soundproofing partition should adjoin the enclosing structures exclusively through two layers of Vibroseal vibration-damping spacer. PS 50/40 metal profiles are installed with a pitch of 600 mm.

Soundline-dB and Gyproc AKU-Line plasterboard sheet cladding materials are attached to the frame with a distance between joints. Upon completion of soundproofing framed cladding installation, the excess of protruding Vibrostack-M 100 Tape tape is cut off and the resulting joint is filled with Vibroseal sealant.

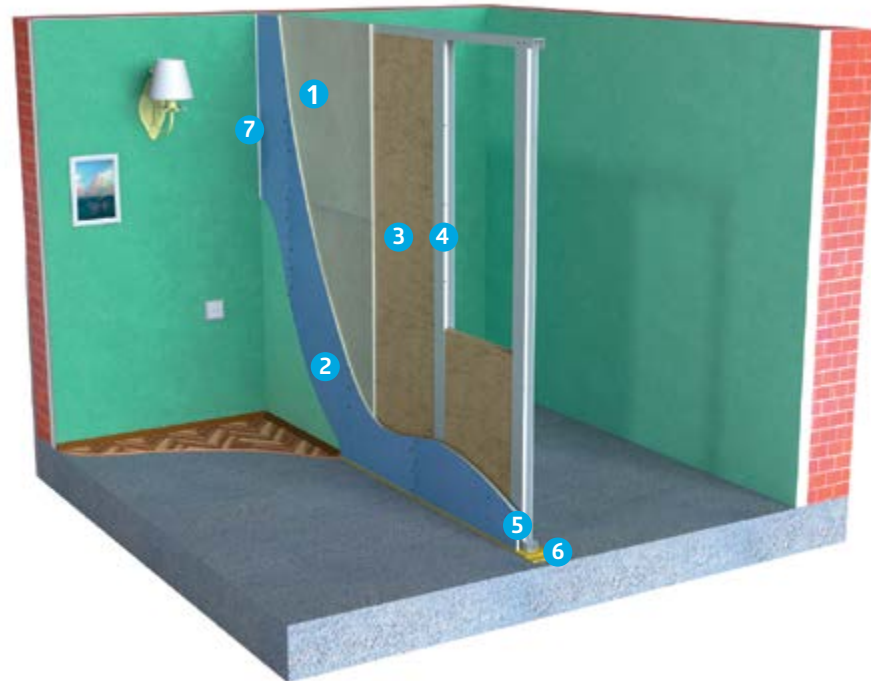


SOUNDPROOFING OF PARTITIONS

SOUNDPROOFING FRAME PARTITION

ON A 75 MM FRAME

MAX LOAD WITHOUT INSERTS 35 kg/r.m. CONSTRUCTION THICKNESS 133 mm MAX ALLOWABLE HEIGHT 5.5 m



$R_w \approx 62$
dB

airborne noise
insulation index of the
entire structure

When applied?

- Suitable as a reliable standard interior partition inside the apartment with the possibility of installing a large number of utilities within the partition.



- 1 Soundline-dB, GFB
sheet 1200x1200x16.5 mm
average consumption per 1 m² = 1.4 pcs.



- 2 AKU-Line plasterboard
sheet 2000 x 1200 x 12,5 mm
average consumption per 1 m² = 0.84 pcs.



- 3 Shumanet-ECO,
acoustic glasswool-fiber board
plate 1200x600x50 mm
average consumption per 1 m² = 0.34 pack.



- 4 Gyproc-Standard Profile 75/40
length 3 r.m.
average consumption per 1 m² = 1.34 pcs



- 5 Gyproc-Standard Profile 75/50
length 3 r.m.
average consumption per 1 m² = 0.33 pcs.



- 6 Vibrostack-M 100 Tape,
vibration damping spacer
roll 30m, width 100mm
thickness 4 mm (3 m²)
average consumption per 1 m² = 0.73 pcs.



- 7 Vibroseal,
silicone neutral sealant 290 ml cartridge
average consumption per 1 m² = 0.8 pcs.



Approximate
cost of the
construction,
based on m²

€/m²



INSTALLATION MANUAL

The frame soundproofing partition should adjoin the enclosing structures exclusively through two layers of Vibrostak-M 100 Tape M150 vibration-damping spacer.

PS 75/50 metal channels are installed with a pitch of 600 mm. The channels are connected to each other according to "back to back" principle.

Soundline-dB and AKU-Line plasterboard sheet cladding materials are attached to the frame with a distance between joints. Upon completion of soundproofing framed cladding installation, the excess of protruding Vibrostack-M 100 Tape tape is cut off and the resulting joint is filled with Vibroseal.

SOLUTIONS FOR **CEILING SOUNDPROOFING**



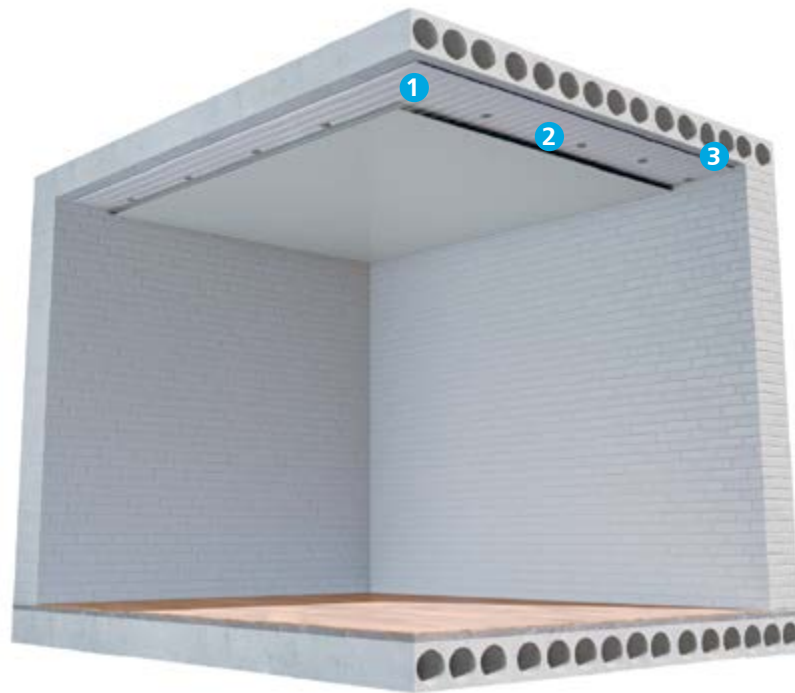


SOUNDPROOFING OF THE CEILINGS

STRETCH CEILING FILLED WITH SHUMANET-THERMO ECO

SHUMANET-THERMO ECO





CONSTRUCTION
THICKNESS  25 mm



When applied?

- For protection against the resonant effect that arises in the inter-ceiling space between the ceiling slab and the stretch ceiling canvas.

Shumanet-Thermo ECO Thermo-soundproofing mat

-  Soundproofing, sound-absorbing and heat-insulating properties
-  Fireproof material
-  Environmental friendliness
-  Easy installation



- 1 Shumanet-Thermo ECO, soundproofing mat sheet 7500x1200x25 mm
average consumption per 1 m² = 0.11,1 pcs.



- 2 Dowel with Rondelle washer, for thermal insulation
average consumption per 1 m² = 5 pcs.



- 3 Ultrakustik glue, 10 l canister
average consumption per 1 m² = 1.25 l.



Approximate cost of the construction, based on m²

€/m²



INSTALLATION MANUAL

Shumanet-Thermo ECO mats are fixed to the rough-ceiling. Shumanet-Thermo ECO is mounted to brick and concrete bases with dowels.

To wooden bases and bases made of AKU-Line blocks, Shumanet-Thermo ECO is attached using washers for thermal insulation of the Rondelle type and self-tapping screws. The sheet is fixed along the length with a pitch of 600 mm.

A least 3 attachment points should be made across the canvas in each row. Sheets are joined closely without gaps.

The cut ends are to be glued with construction adhesive tape. Sections of the shell without filler are tucked on the back side.



SOUNDPROOFING OF THE CEILINGS

FRAMELESS CLADDING USING ZIPS SANDWICH-PANELS

ZIPS-III-ULTRA

MAX LOAD WITHOUT INSERTS 6 kg/m² CONSTRUCTION THICKNESS 55 mm



When applied?

- If you need maximum effect with the smallest thickness.
- Saves from noises of average volume - conversations, TV, barking dogs, crying children.

ZIPS-III-ULTRA

3rd generation soundproofing frameless system

- Fireproof material
- Certified
- Has a European certificate
- Passed acoustic tests

$\Delta R_w \approx 18$ dB additional airborne noise insulation

$R_w \approx 67$ dB airborne noise insulation index of the entire structure



- 1 ZIPS-III-Ultra sandwich-panel 1200x600x42 mm with a mounting kit
average consumption per 1 m² = 1.5 pcs.



- 2 AKU-Line plasterboard sheet 2000 x 1200 x 12,5 mm
average consumption per 1 m² = 0.42 pcs.



- 3 Vibroseal, silicone neutral sealant 290 ml cartridge
average consumption per 1 m² = 0.4 pcs.



- 4 Vibrostak-M 100 Tape, vibration damping spacer roll 30m, width 100mm thickness 4 mm [3 m²]
average consumption per 1 m² = 0.73 pcs.



Approximate cost of the construction, based on m²

€/m²

Excessively protruding Vibrostak-M 100 Tape is cut flush with the finishing layer of AKU-Line plasterboard sheets. Seams are filled with Vibroseal vibroacoustic sealant.



INSTALLATION MANUAL

ZIPS-III-Ultra panels are fixed to the ceiling through 8 vibration units. Metal anchor screws from the mounting kit are inserted into the two central vibration units. Shortened anchor screws are used for mounting on hollow slabs.

The head of the screw should be screwed into the vibration unit no deeper than 1-2 mm from the level of the front side of the panel.

For the first panel, adjacent to the walls, the ridges are cut along the short and long sides, for the next panels of the first row - only along the long side.

The ends of the sandwich-panels must adjoin the side walls through two layers of Vibrostak-M 100 Tape vibration damping spacer. The tape is glued and fixed with Vibroseal sealant.

If the panel is cut, all available attachment points are used for installation. Cuttings less than 250 mm are not used in the installation.

The joints between the sandwich-panels are treated with Vibroseal. The finishing layer of AKU-Line plasterboard sheets 12.5 mm thick is fixed to the resulting surface. Sheets must adjoin to the walls through 2 layers of Vibrostak-M 100 Tape vibration damping spacer.



SOUNDPROOFING OF THE CEILINGS

FRAMELESS CLADDING USING ZIPS SANDWICH-PANELS

ZIPS-VECTOR

MAX LOAD WITHOUT INSERTS  6 kg/m² CONSTRUCTION THICKNESS  53 mm



When applied?

- When you need to get an acceptable result with a small thickness.
- If slight noise from conversations, TV, radio or other low domestic noise interferes.

ZIPS-VECTOR

Initial level soundproofing panel system



Fireproof material



Certified



Has a European certificate



Passed acoustic tests

$\Delta R_w \approx 14$ dB
additional
airborne
noise insulation

$R_w \approx 65$ dB
airborne noise
insulation index of the
entire structure



- 1 ZIPS-Vector sandwich-panel 1200x600x40 mm with a mounting kit
average consumption per 1 m² = 1.5 pcs.



- 2 AKU-Line plasterboard sheet 2000 x 1200 x 12,5 mm
average consumption per 1 m² = 0.42 pcs.



- 3 Vibroseal, silicone neutral sealant 290 ml cartridge
average consumption per 1 m² = 0.4 pcs.



- 4 Vibrostack-M 100 Tape, vibration damping spacer roll 30m, width 100mm thickness 4 mm [3 m²]
average consumption per 1 m² = 0.73 pcs.



Approximate cost of the construction, based on m²

€/m²

Excessively protruding Vibrostack-M 100 Tape is cut flush with the finishing layer of AKU-Line plasterboardsheets. Seams are filled with Vibroseal vibroacoustic sealant.



INSTALLATION MANUAL

ZIPS-Vector panels are fixed to the ceiling through 8 vibration units. Metal anchor screws from the mounting kit are inserted into the two central vibration units. Shortened anchor screws are used for mounting on hollow slabs.

The head of the screw should be screwed into the vibration unit no deeper than 1-2 mm from the level of the front side of the panel.

For the first panel, adjacent to the walls, the ridges are cut along the short and long sides, for the next panels of the first row - only along the long side.

The ends of the sandwich-panels must adjoin the side walls through two layers of Vibrostack-M 100 Tape vibration damping spacer. The tape is glued and fixed with Vibroseal sealant.

If the panel is cut, all available attachment points are used for installation. Cuttings less than 250 mm are not used in the installation.

The joints between the sandwich-panels are treated with Vibroseal sealant. The finishing layer of AKU-Line plasterboard sheets 12.5 mm thick is fixed to the resulting surface. Sheets must adjoin to the walls through 2 layers of Vibrostack-M 100 Tape vibration damping spacer.



SOUNDPROOFING OF THE CEILINGS

FRAMELESS CLADDING USING ZIPS SANDWICH-PANELS

ZIPS-MODUL

MAX LOAD
WITHOUT INSERTS



6 kg/m²

CONSTRUCTION
THICKNESS



83 mm



When applied?

- If noise of average volume - conversations, TV, barking dogs, crying children interferes.

ZIPS-MODUL

Basic level soundproofing panel system



Fireproof material



Certified



Has a European certificate



Passed acoustic tests

$\Delta R_w \approx 18$ dB
additional
airborne
noise insulation

$R_w \approx 68$ dB
airborne noise
insulation index of the
entire structure



- 1 ZIPS-Modul sandwich-panel 1200x600x42 mm with a mounting kit
average consumption per 1 m² = 1.5 pcs.



- 2 AKU-Line plasterboard sheet 2000 x 1200 x 12,5 mm
average consumption per 1 m² = 0.42 pcs.



- 3 Vibroseal, silicone neutral sealant 290 ml cartridge
average consumption per 1 m² = 0.4 pcs.



- 4 Vibrostack-M 100 Tape, vibration damping spacer roll 30m, width 100mm thickness 4 mm [3 m²]
average consumption per 1 m² = 0.73 pcs.



Approximate
cost of the
construction,
based on m²

€/m²

Excessively protruding Ultrakustik is cut flush with the finishing layer of AKU-Line plasterboard sheets. Seams are filled with Vibroseal vibroacoustic sealant.

INSTALLATION MANUAL

ZIPS-Modul panels are fixed to the ceiling through 8 vibration units. Metal anchor screws from the mounting kit are inserted into the two central vibration units. Shortened anchor screws are used for mounting on hollow slabs.

The head of the screw should be screwed into the vibration unit no deeper than 1-2 mm from the level of the front side of the panel.

For the first panel, adjacent to the walls, the ridges are cut along the short and long sides, for the next panels of the first row - only along the long side.

The ends of the sandwich-panels must adjoin the side walls through two layers of Vibrostak-M 100 Tape vibration damping spacer. The tape is glued and fixed with Vibroseal sealant.

If the panel is cut, all available attachment points are used for installation. Cuttings less than 250 mm are not used in the installation.


The joints between the sandwich-panels are treated with Vibroseal sealant. The finishing layer of AKU-Line plasterboard sheets 12.5 mm thick is fixed to the resulting surface. Sheets must adjoin to the walls through 2 layers of Vibrostak-M 100 Tape vibration damping spacer.



SOUNDPROOFING OF THE CEILINGS

FRAMELESS CLADDING USING ZIPS SANDWICH-PANELS

ZIPS-CINEMA

MAX LOAD WITHOUT INSERTS  6 kg/m² CONSTRUCTION THICKNESS  133 mm



When applied?

- If children stomp from above, objects fall or the noise from conversations, TV, home theater or a rodding dog is so strong that maximum efficiency is required.
- The effect of reducing impact noise is seen with complex soundproofing.

ZIPS-CINEMA

high level soundproofing frameless system



Fireproof material



Certified



Has a European certificate



Passed acoustic tests

$\Delta R_w \approx 21$ dB
additional
airborne
noise insulation

$R_w \approx 72$ dB
airborne noise
insulation index of the
entire structure



INSTALLATION MANUAL

ZIPS-Cinema panels are fixed to the ceiling through 8 vibration joints. Metal anchor screws from the mounting kit are inserted into the two central vibration units. Shortened anchor screws are used for mounting on hollow slabs.

The head of the screw should be screwed into the vibration unit no deeper than 1-2 mm from the level of the front side of the panel.

For the first panel, adjacent to the walls, the ridges are cut along the short and long sides, for the next panels of the first row - only along the long side.

The ends of the sandwich-panels must adjoin the side walls through two layers of Vibrostack-M 150 Tape vibration damping spacer. The tape is glued and fixed with Vibrosil sealant.

If the panel is cut, all available attachment points are used for installation. Cuttings less than 250 mm are not used in the installation.

The joints between the sandwich-panels are treated with Vibroseal. The finishing layer of AKU-Line plasterboard sheets 12.5 mm thick is fixed to the resulting surface. Sheets must adjoin to the walls through 2 layers of Vibrostack-M 150 Tape vibration damping spacer.



- 1 ZIPS-Cinema sandwich-panel 1200x600x42 mm with a mounting kit
average consumption per 1 m² = 1.5 pcs.



- 2 AKU-Line plasterboard sheet 2000 x 1200 x 12,5 mm
average consumption per 1 m² = 0.42 pcs.



- 3 Vibroseal, silicone neutral sealant 290 ml cartridge
average consumption per 1 m² = 0.4 pcs.



- 4 Vibrostack-M 150 Tape, vibration damping spacer roll 30m, width 100mm thickness 4 mm (3 m²)
average consumption per 1 m² = 0.73 pcs.



Approximate cost of the construction, based on m²

€/m²

Excessively protruding Vibrostack-M 150 Tape is cut flush with the finishing layer of AKU-Line plasterboard sheets. Seams are filled with Vibroseal vibroacoustic sealant.



SOUNDPROOFING OF THE CEILINGS

FRAMELESS CLADDING USING ZIPS SANDWICH-PANELS

ZIPS-Z4

FOR ROUGH CEILING!

MAX LOAD
WITHOUT INSERTS

6 kg/m²

CONSTRUCTION
THICKNESS

55 mm



When applied?

- When the wall on which installation is to be performed is not leveled.
- Saves from noises of average volume - conversations, TV, barking dogs, crying children.

ZIPS-Z4

Soundproofing panel system with surface leveling function



Fireproof material



Certified



Has a European certificate



Passed acoustic tests

$\Delta R_w \approx 19$ dB
additional
airborne
noise insulation

$R_w \approx 69$ dB
airborne noise
insulation index of the
entire structure



- 1 ZIPS-Z4 sandwich-panel 1200x600x42 mm with a mounting kit
average consumption per 1 m² = 1.5 pcs.



- 2 AKU-Line plasterboard sheet 2000 x 1200 x 12,5 mm
average consumption per 1 m² = 0.42 pcs.



- 3 Vibroseal, silicone neutral sealant 290 ml cartridge
average consumption per 1 m² = 0.4 pcs.



- 4 Vibrostack-M 100 Tape, vibration damping spacer roll 30m, width 100mm thickness 4 mm (3 m²)
average consumption per 1 m² = 0.73 pcs.



Approximate cost of the construction, based on m²

€/m²



INSTALLATION MANUAL

ZIPS-Z4 panels are attached to the wall only through the existing vibration units using plastic dowels.

With the use of standard mounting kit, it is possible to level out differences and slopes of the surface up to 20 mm.

With the use of additional self-adhesive ST spacers, differences of up to 50 mm can be compensated. In this case it is also necessary to use universal self-tapping screws of greater length to fix the panels.

To achieve the declared features, the ZIPS-Z4 system must be mounted in strict accordance with the manual.



SOUNDPROOFING OF THE CEILINGS

FRAME SOUNDPROOFING CEILING ON HANGS

ULTRAKUSTIK

MAX LOAD
WITHOUT INSERTS 6 kg/m²

CONSTRUCTION
THICKNESS 130 mm



When applied?

- When you need high efficiency with limited height.
- If children stomp from above, objects fall, loud music, noise from conversations, TV or a barking dog.

ULTRAKUSTIK universal ceiling hang

- Service life over 30 years
- Carrying capacity 15 kg
- Passed acoustic tests

$\Delta R_w \approx 21$ dB
additional
airborne
noise insulation

$R_w \approx 75$ dB
airborne noise
insulation index of the
entire structure



INSTALLATION MANUAL

The frame is fixed to the ceiling with the help of ULTRAKUSTIK vibration insulating hangs. Rigid structural elements must adhere to all walls through an elastic spacer made of Vibrostack-M 100 Tape M100 material in two layers. The sound-absorbing slab Shumanet-ECO is laid in the inner space of the frame in two layers.

After sound-absorbing slabs laying the frame is sheathed in one layer with Soundline-dB acoustic GFB triplex, and Gyproc AKU-line finish plasterboard sheets are directly attached to them.

Soundline-dB and AKU-Line plasterboard sheet facing materials are fixed with a spacing between joints. Upon completion of installation soundproofing framed cladding, the excess of protruding Vibrostak-M 100 Tape is cut off and the resulting joint is filled with Vibroseal.



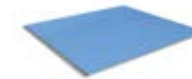
- 10 Vibrostack-M 100 Tape, vibration damping spacer roll 30m, width 100mm thickness 4 mm [3 m²] average consumption per 1 m² = 0.73 pcs.



- 1 ULTRAKUSTIK, ceiling hanger average consumption per 1 m² = 2.8 pcs.



- 2 Soundline-dB, acoustic GFB triplex sheet 1200x1200x16.5 mm average consumption per 1 m² = 0.7 pcs.



- 3 AKU-Line plasterboard sheet 2000 x 1200 x 12,5 mm average consumption per 1 m² = 0.42 pcs.



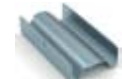
- 4 Shumanet-ECO acoustic glasswool-fiber board plate 1200x600x50 mm average consumption per 1 m² = 0.67 pack.



- 5 Gyproc-Standard Profile PP 60/27 length 3 r.m. average consumption per 1 m² = 1.3 pcs.



- 6 Gyproc-Standard Profile PPN 28/27 length 3 r.m. average consumption per 1 m² = 0.33 pcs.



- 7 Extension PP 27x60 average consumption per 1 m² = 1,1 pcs.



- 8 Connector PP 27x60, two-level average consumption per 1 m² = 5 pcs.



- 9 Vibroseal, silicone neutral sealant 290 ml cartridge average consumption per 1 m² = 0.4 pcs.

Approximate cost of the construction, based on m²

€/m²



SOUNDPROOFING OF THE CEILINGS

FRAME SOUNDPROOFING CEILING ON HANGS

ULTRAKUSTIK (2 LAYERS)

MAX LOAD WITHOUT INSERTS 6 kg/m² CONSTRUCTION THICKNESS 200 mm



When applied?

- When you need maximum effect.
- If there are stomping children, falling objects, loud music, vibration or noise from conversations, TV or a barking dog from above.

ULTRAKUSTIK universal ceiling hang

- Service life over 30 years
- Carrying capacity 15 kg
- Passed acoustic tests

$\Delta R_w \approx 21$ dB
additional
airborne
noise insulation

$R_w \approx 75$ dB
airborne noise
insulation index of the
entire structure



INSTALLATION MANUAL

The frame is fixed to the ceiling with the help of ULTRAKUSTIK or vibration insulating hangs. Rigid structural elements must adhere to all walls through an elastic spacer made of Vibrostack-M 100 Tape material in two layers. The sound-absorbing slab Shumanet-ECO is laid in the inner space of the frame in two layers.

After sound-absorbing slabs laying the frame is sheathed in one layer with Soundline-dB acoustic GFB triplex, and finish AKU-Line plasterboard plasterboard sheets are directly attached to them.

Soundline-dB and Gyproc Aku-line sheet facing materials are fixed with a stagger between joints. Upon completion of installation soundproofing framed cladding, the excess of protruding Vibrostack-M 100 Tape is cut off and the resulting joint is filled with Vibroseal.



- 1 ULTRAKUSTIK, ceiling hanger
average consumption per 1 m² = 2.8 pcs.



- 2 Soundline-dB, acoustic GFB triplex sheet 1200x1200x16.5 mm
average consumption per 1 m² = 0.7 pcs.



- 3 AKU-Line plasterboard sheet 2000 x 1200 x 12,5 mm
average consumption per 1 m² = 0.34 pcs.



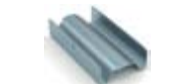
- 4 Shumanet-ECO acoustic glasswool-fiber board slab 1200x600x50 mm
average consumption per 1 m² = 1 pack.



- 5 Gyproc-Standard Profile PP 60/27 length 3 r.m.
average consumption per 1 m² = 1.4 pcs.



- 6 Gyproc-Standard Profile PPN 28/27 length 3 r.m.
average consumption per 1 m² = 0.24 pcs.



- 7 Extension PP 27x60
average consumption per 1 m² = 1 pcs.



- 8 Connector PP 27x60, two-level
average consumption per 1 m² = 3.1 pcs.



- 9 Vibroseal, silicone neutral sealant 290 ml cartridge
average consumption per 1 m² = 0.4 pcs.



Approximate cost of the construction, based on m²

€/m²

- 10 Vibrostack-M 100 Tape, vibration damping spacer roll 30m, width 100mm thickness 4 mm (3 m²)
average consumption per 1 m² = 0.73 pcs.

SOLUTIONS FOR **FLOOR SOUNDPROOFING**




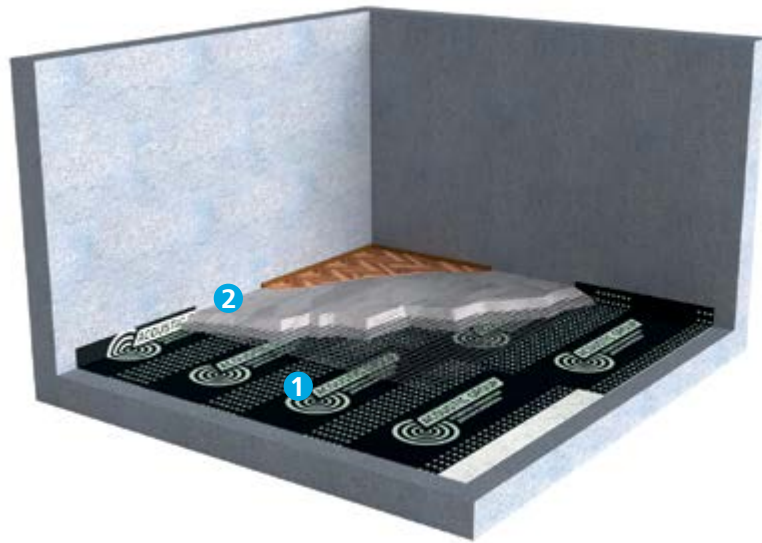


FLOOR SOUNDPROOFING

HYDRO- SOUNDPROOFING FLOOR WITH THE USE OF

Shumanet-100Hydro

MAX CONSTRUCTION LOAD  320 kg/m² CONSTRUCTION THICKNESS  65 mm



When applied?

- If there is a need to reduce noise from footsteps and attain a reliable waterproofing. Most often used in wet premises.

Shumanet-100Hydro Water-soundproofing roll material



Moisture resistant material



Certified



Passed acoustic tests

$\Delta L_{nw} \approx 24$ dB
additional impact noise insulation



INSTALLATION MANUAL

The air temperature in the room must be above + 5°C. Before installation carefully sweep the floor base to prevent construction debris ingress.

The material is rolled out and cut in such a way as to completely cover the floor area and provide placing of 100 mm on walls or columns above the level of the finished screed. The bituminous surface of the material must face upwards, and the edges must overlap one another.

The joints between the sheets of material are glued by softening the bitumen with a heat gun.

After laying the Shumanet-100Hydro material, pour a cement-sand screed 60 mm thick from grade M-300 sand concrete or ready-mixed concrete.

When arranging a screed, reinforce it with a metal mesh with a cell size of 50x50 mm and a rod with a diameter.

The mesh should be located in the screed layer not less than 20 mm from its lower level and not higher than the screed center line.



- 1 Shumanet-100 Hydro sound- waterproofing material 10x1m roll, thickness 5mm
average consumption per 1 m² = 0.1,1 pcs.



- 2 Vibroseal, silicone neutral sealant 290 ml cartridge
average consumption per 1 m² = 0.36 pcs.



Approximate cost of the construction, based on m²

€/m²

The mesh is laid with an overlap of joints of 100 mm, which are fastened with knitting wire every 200 mm.

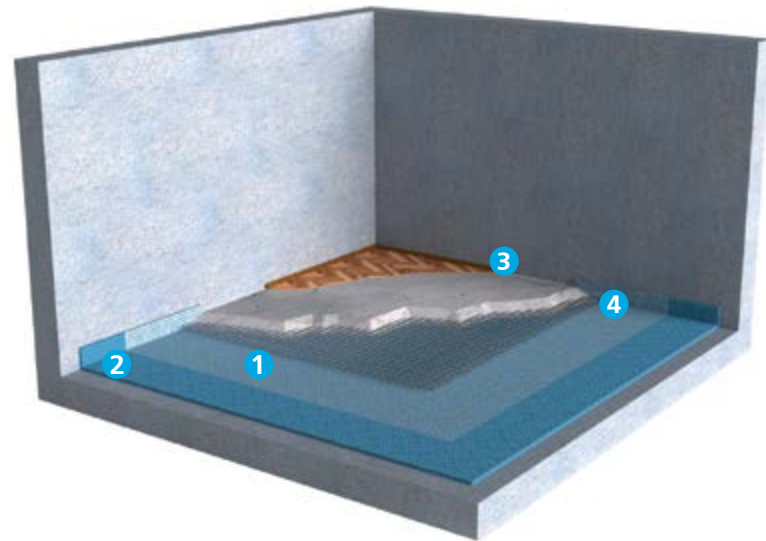


FLOOR SOUNDPROOFING

SOUNDPROOFING FLOOR WITH THE USE OF

Shumoplast

MAX CONSTRUCTION LOAD 320 kg/m² CONSTRUCTION THICKNESS 80 mm



When applied?

- If you need to make soundproofing and level the floors.
- When loud noise from the TV, radio and conversations, as well as footsteps interferes.

Shumoplast leveling multifunctional floating floor base

- Patented technology
- Certified
- Passed acoustic tests

$\Delta L_{nw} \approx 28$ dB additional impact noise insulation

$\Delta R_w \approx 9$ dB additional airborne noise insulation index



- 1 Shumoplast, granular compound (per 10 m² with a layer thickness of 2 cm) average consumption per 1 m² = 0.1 pack.



- 2 Shumoplast Primer 3 kg primer mass average consumption per 1 m² = 0.04 pack.



- 3 Vibroseal, silicone neutral sealant 290 ml cartridge average consumption per 1 m² = 0.36 pcs.



- 4 Reinforced film roll 2x25 m, PVC average consumption per 1 m² = 0.02 roll.



Approximate cost of the construction, based on m²

€/m²



INSTALLATION MANUAL

Before installation of a coating with a standard thickness of 20 mm, remove construction debris with a fraction size of more than 10 mm from the surface of the floor slab.

The material is compacted to the required thickness using a polyurethane "floater". Shumoplast coating is applied to the floor either manually or mechanically.

Shumoplast coating is placed on all adjacent walls and columns to a height slightly greater than the level of the leveling screed to prevent the formation of sound bridges during its arrangement.

To increase adhesion, the surfaces of walls and columns are pre-primed with Shumoplast before applying coating.

A leveling screed with a thickness of at least 60 mm is laid directly on the Shumoplast coating and must necessarily be reinforced with metal structures for increased mechanical strength.

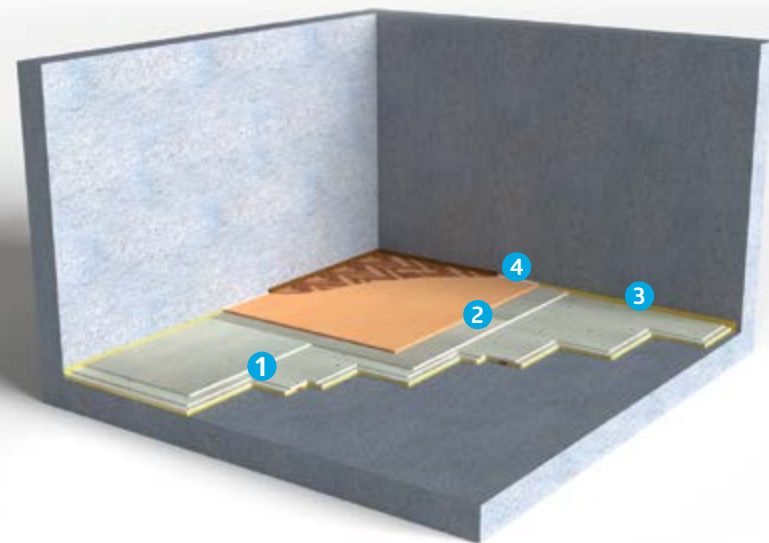


FLOOR SOUNDPROOFING

UNDER THE FINISH COATING WITH THE USE OF

ZIPS-FLOOR VECTOR

CONSTRUCTION THICKNESS  85 mm



When applied?

- To reduce medium intensity noise from neighbors below.
- To reduce impact noise when wet processes are unacceptable.

ZIPS-FLOOR VECTOR

Initial level prefabricated panel system for soundproofing floors



Patented technology



Certified



Has a European certificate



Passed acoustic tests

$\Delta L_{nw} \approx 28$ dB additional impact noise insulation

$\Delta R_w \approx 8$ dB additional airborne noise insulation index



- 1 ZIPS-FL00R Vector, sandwich-panel
1200x600x50 mm
average consumption per 1 m² = 1.5 pcs.



- 2 Soundline-dB, triplex weighted moisture-resistant AKU-Line plasterboard sheet 1200x1200x16.5 mm
average consumption per 1 m² = 0.7 pcs.



- 3 Vibrostack-M 100 Tape, vibration damping spacer roll 30m, width 100mm thickness 4 mm (3 m²)
average consumption per 1 m² = 0.73 pcs



- 4 Vibroseal, silicone neutral sealant 290 ml cartridge
average consumption per 1 m² = 0.6 pcs.



Approximate cost of the construction, based on m²

€/m²

At the final stage, the excess Vibrostak-M 100 Tape is cut flush with the finish layer of plywood. The resulting joints, as well as the gaps between the plywood sheets, are filled with Vibroseal. The finish floor is laid. The skirt-boards are attached only to the floor or wall.



Before installation, carefully sweep and clean the floor surface of construction debris. The floor must be flat and leveled. In case of irregularities and protrusions, a layer of sand concrete leveling screed is arranged.

Vibrostack-M 100 Tape tape is glued in 2 layers along the perimeter of the room using Vibroseal.

Panels are mounted from left to right. For the first panel, the ridges are cut along the short and long sides, for all next panels of the first row - only along the long side.

The panels are joined to each other by means of a tongue-and-groove connection, the tongue-and-groove joints are additionally fastened with self-tapping screws for AKU-Line plasterboards with 150 mm pitch.

When closing a row, the panel may be cut. Part of the panel less than 300 mm is not used. Panels are laid with joints offset.

After the installation of sandwich-panels, a layer of Soundline-dB triplex is laid over the entire area. The pitch of the screws is 400x200 mm, the attachment points are cleaned. Then a layer of rubber mastic is applied over the triplex, and sheets of moisture-resistant plywood 18 mm are mounted with a 3-5 mm gap between the sheets.

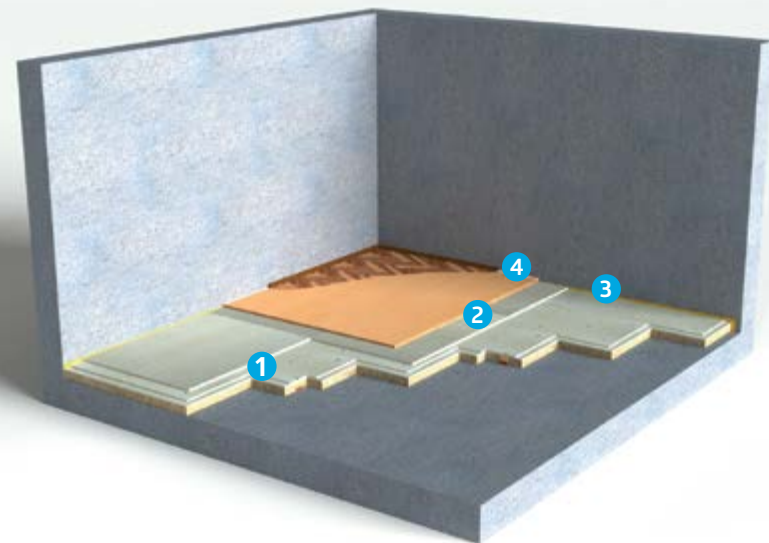


FLOOR SOUNDPROOFING

UNDER THE FINISH COATING WITH THE USE OF

ZIPS-FLOOR MODUL

CONSTRUCTION THICKNESS  110 mm



When applied?

- When loud noise from the TV, radio and conversations interferes.
- To reduce impact noise when wet processes are unacceptable.

ZIPS-FLOOR MODUL

Basic level prefabricated panel system for soundproofing floors

-  Patented technology
-  Certified
-  Has a European certificate
-  Passed acoustic tests

$\Delta L_{nw} \approx 32$ dB additional impact noise insulation

$\Delta R_w \approx 9$ dB additional airborne noise insulation index



- 1 ZIPS-FLOOR Modul, sandwich-panel
1200x600x50 mm
average consumption per 1 m² = 1.39 pcs.



- 2 Soundline-dB, acoustic GFB triplex sheet 1200x1200x16.5 mm
average consumption per 1 m² = 0.7 pcs.



- 3 Vibrostack-M 150 Tape, vibration damping spacer roll 30m, width 150mm thickness 4 mm (3 m²)
average consumption per 1 m² = 0.73 pcs.



- 4 Vibroseal, silicone neutral sealant 290 ml cartridge
average consumption per 1 m² = 0.6 pcs.



Approximate cost of the construction, based on m²

€/m²

At the final stage, the excess Vibrostack-M 100 Tape is cut flush with the finish layer of plywood. The resulting joints, as well as the gaps between the plywood sheets, are filled with Vibroseal. The finish floor is laid. The skirt-boards are attached only to the floor or wall.

Before installation, carefully sweep and clean the floor surface of construction debris. The floor must be flat and leveled. In case of irregularities and protrusions, a layer of sand concrete leveling screed is arranged.

Vibrostack-M 100 Tape is glued in 2 layers along the perimeter of the room using Vibroseal sealant.

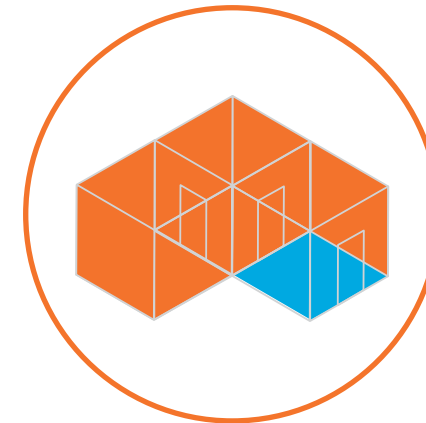
Panels are mounted from left to right. For the first panel, the ridges are cut along the short and long sides, for all next panels of the first row - only along the long side.

The panels are joined to each other by means of a tongue-and-groove connection, the tongue-and-groove joints are additionally fastened with self-tapping screws for AKU-Line plasterboards with 150 mm pitch.

When closing a row, the panel may be cut. Part of the panel less than 300 mm is not used. Panels are laid with joints offset.

After the installation of sandwich-panels, a layer of Soundline-dB triplex is laid over the entire area. The pitch of the screws is 400x200 mm, the attachment points are cleaned. Then a layer of rubber mastic is applied over the triplex, and sheets of moisture-resistant plywood 18 mm are mounted with a 3-5 mm gap between the sheets.

SOUNDPROOFING CASES



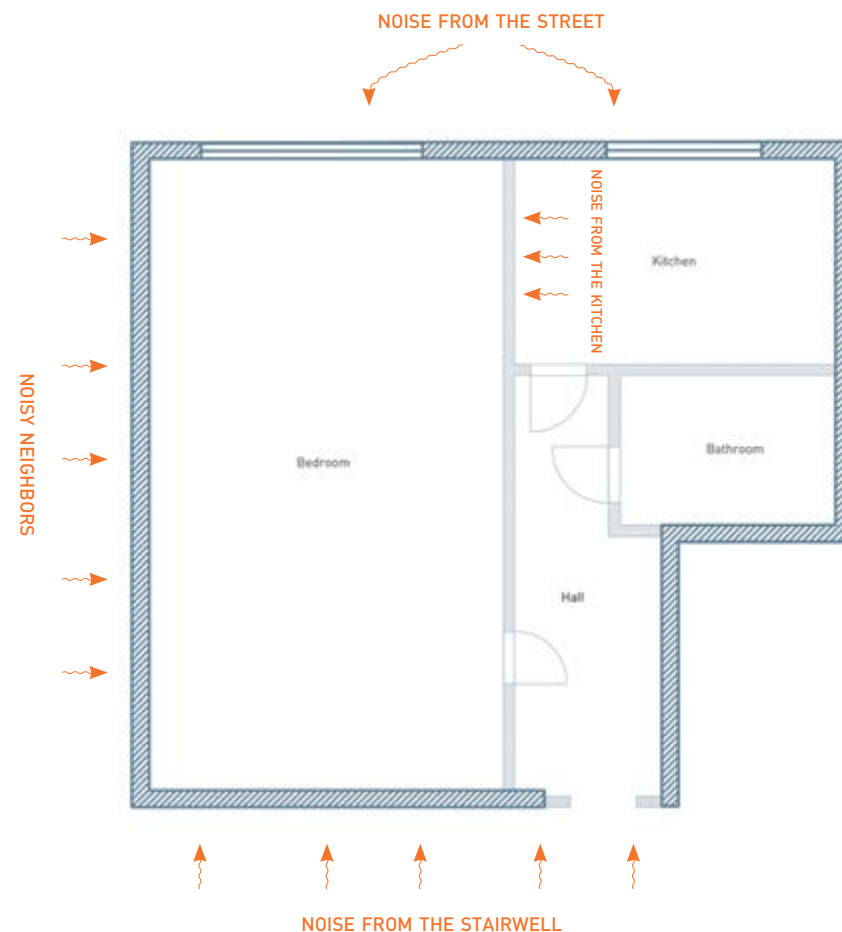
OPTION: «ULTRA-THIN»

GIVEN:

Small one-room apartment.

TASK:

→ Get maximum effect with minimum space loss.



1 STAGE FLOOR SOUNDPROOFING

RECOMMENDED CONSTRUCTION:

Hydro- soundproofing floor with the use of Shumanet-100Hydro throughout the entire area of the apartment

Shumanet-100Hydro is a roll material that solves two problems at once: hydro- and soundproofing. It is laid on a leveled base under the screed. The base needs to be leveled first.



2 STAGE CEILING SOUNDPROOFING

RECOMMENDED CONSTRUCTION:

Soundproofing frameless cladding ZIPS-Z4 (55 mm) for rough ceilings (ZIPS-III-Ultra can be used)

- 1 Due to its low thickness and high efficiency, the construction minimizes height loss.
- 2 No preliminary leveling of the ceiling is required, the construction allows leveling differences up to 50 mm.



3 STAGE WALLS SOUNDPROOFING

RECOMMENDED CONSTRUCTION:

Soundproofing frameless cladding ZIPS-III-Ultra

- 1 Construction with optimum thickness/efficiency ratio. We use in this variant, since we need the maximum effect with the smallest thickness.
- 2 Protects from noises of average volume - conversations, TV, barking dogs, crying children.



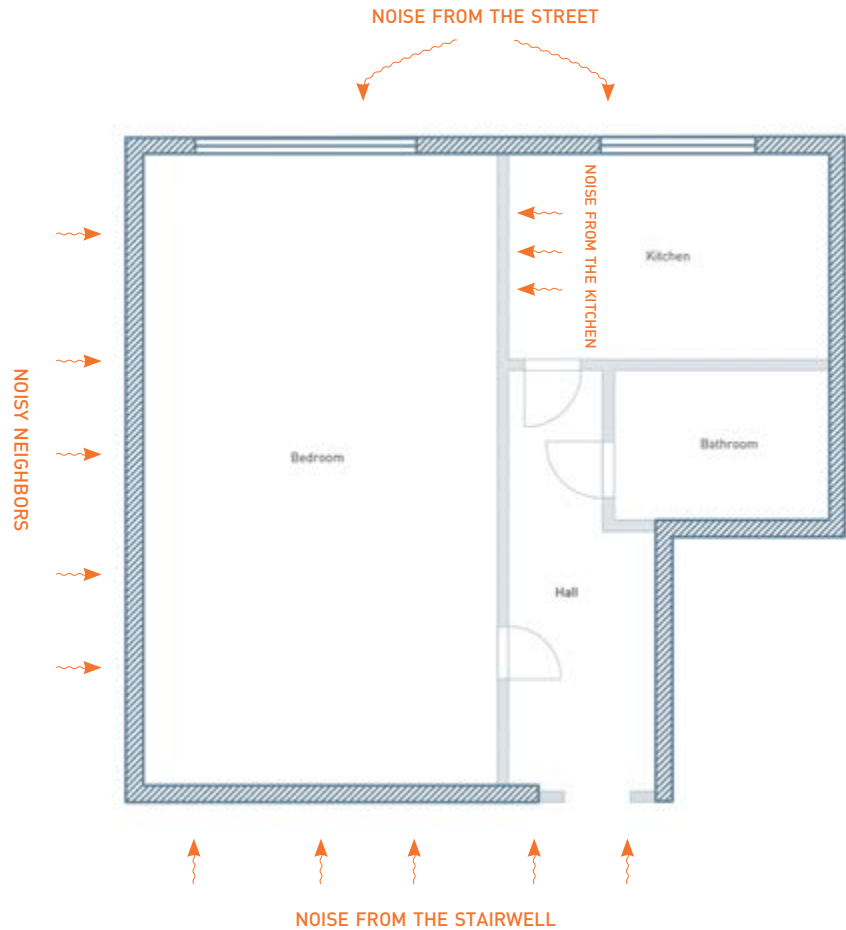
OPTION: «ECONOM»

GIVEN:

Small one-room apartment.

TASK:

→ Make it “the minimum”, meeting the regulatory requirements for apartment soundproofing, and prevent resonant effects from the stretch ceiling.



1 STAGE FLOOR SOUNDPROOFING

RECOMMENDED CONSTRUCTION:

Soundproofing floor with the use of Shumoplast in the bedroom

This is a construction with a high level of impact and airborne noise soundproofing.

Hydro-soundproofing floor with the use of Shumanet-100Hydro in wet areas and non-residential premises

Shumanet-100Hydro is a roll material that solves two problems at once: hydro- and soundproofing. It is laid on a leveled base under the screed. The base needs to be leveled first.



2 STAGE CEILING SOUNDPROOFING

RECOMMENDED CONSTRUCTION:

In places where a stretch ceiling is installed, we lay Shumanet-Thermo ECO sound-absorbing mats

Shumanet-Thermo ECO reduces the resonance effect that occurs in the inter-ceiling space between the sub ceiling and the stretch ceiling sheet.



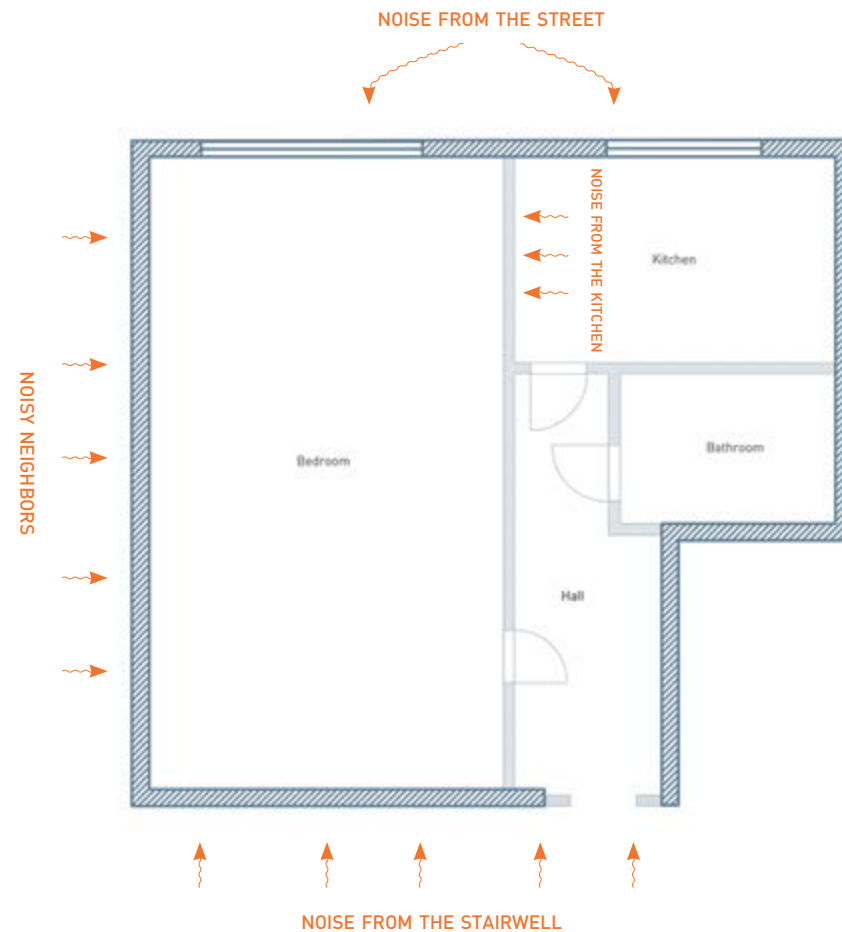
OPTION: «STANDARD»

GIVEN:

Small one-room apartment.

TASK:

- Perform partial sound-proofing, meet regulatory requirements and “close” weak points in the noise penetration routes.



STAGE 1

FLOOR SOUNDPROOFING

WC, BATHROOM, LAUNDRY

RECOMMENDED CONSTRUCTION:

Water-soundproofing floor with the use of Shumanet-100Hydro

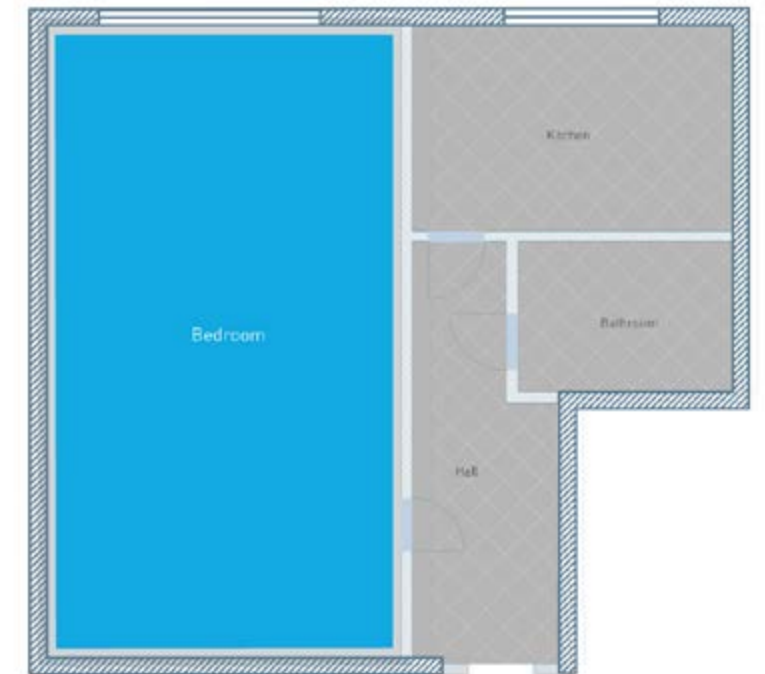
We solve two problems at once: hydro- and soundproofing of the room. The material is laid on a previously leveled base under the screed.

HABITABLE ROOMS

RECOMMENDED CONSTRUCTION:

Soundproofing floor with the use of Shumoplast

This is leveling multifunctional floating floor with a high level of impact and airborne noise soundproofing. Shumoplast make soundproofing and level the floors.



- Shumoplast
- Shumanet-100Hydro



STAGE 2

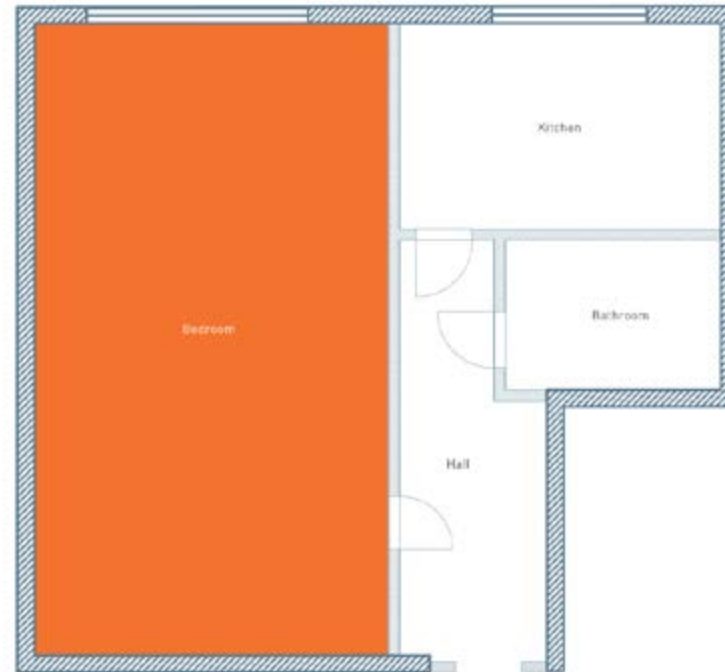
SOUNDPROOFING OF THE CEILING

HABITABLE ROOM

RECOMMENDED CONSTRUCTION:

Soundproofing frameless ceiling ZIPS-Z4 (55 mm) for rough ceilings

- 1 Due to its low thickness and high efficiency, the construction minimizes height loss.
- 2 No preliminary leveling of the ceiling is required, the construction allows leveling differences up to 50 mm.



Soundproofing frameless ceiling ZIPS-Z4/ZIPS-III-Ultra



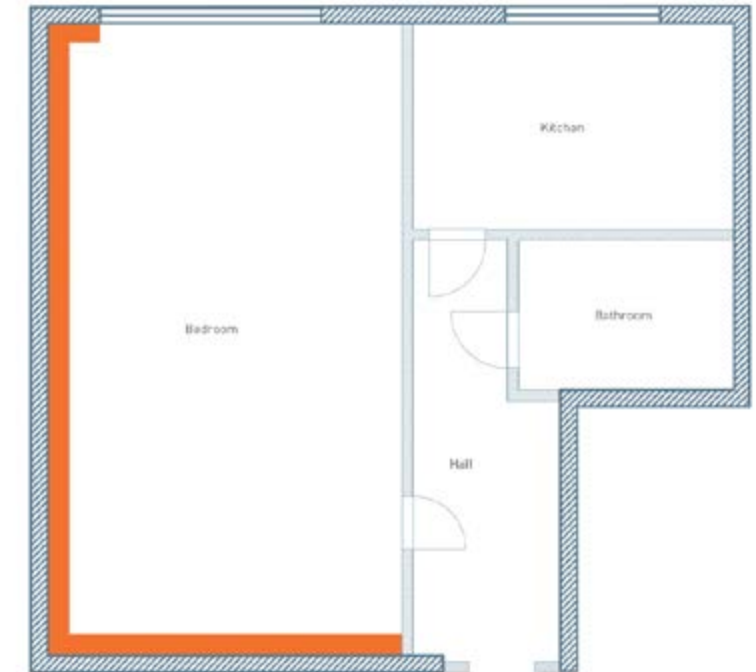
STAGE 3

WALL SOUNDPROOFING

HABITABLE ROOM

RECOMMENDED CONSTRUCTION:

- 1 **Soundproofing frameless ceiling ZIPS-Z4 (55 mm) for rough ceilings**
A design with an optimal thickness/efficiency ratio. We use it in this variant, since we need the maximum effect with the smallest thickness.
- 2 Protects against medium-volume noises - conversations, TV, barking dog or crying children.



*Inter-room soundproofing through partitions with a doorway is limited to the door as the weakest point of soundproofing. If it is necessary to achieve the maximum effect of soundproofing between rooms, it is recommended to use soundproofing doors with the following characteristics:

- Airborne noise insulation index not less than 40 dB,
- Presence of a stationary threshold,
- Presence of double/triple sealing circuit,
- Massive slab at least 70 kg.

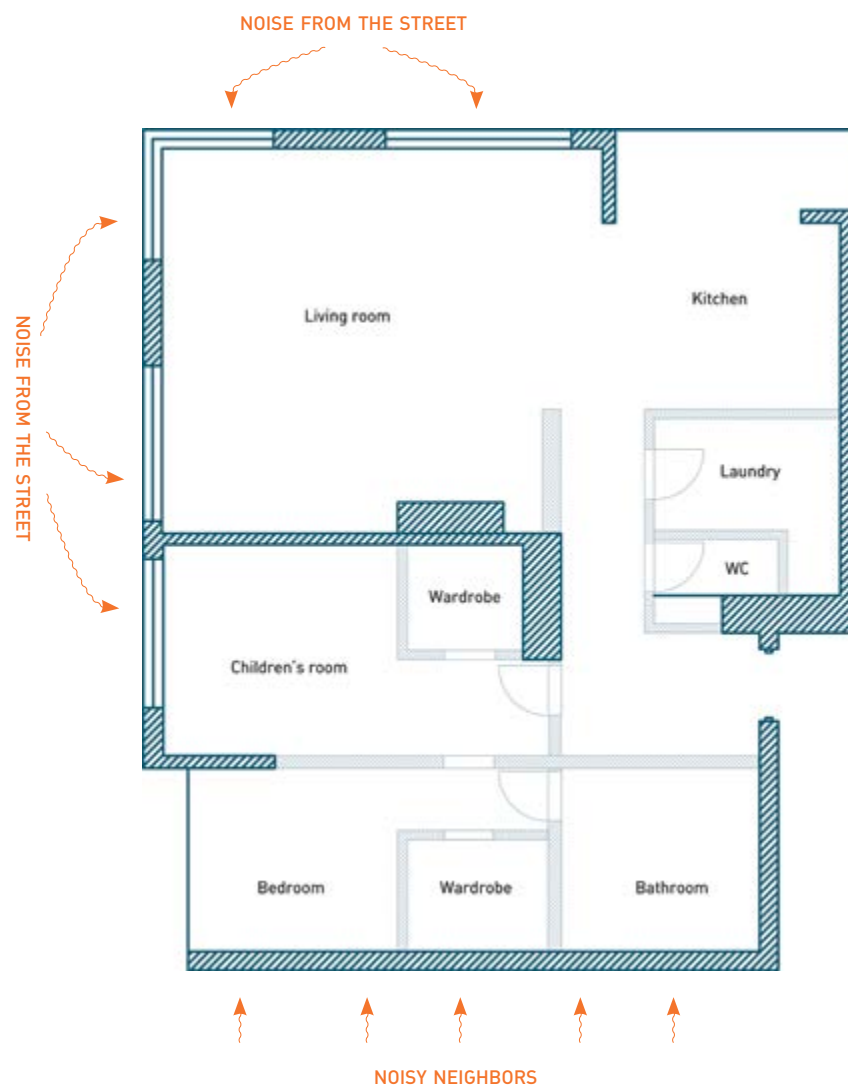
OPTION: «COMFORT»

GIVEN:

Three-room apartment with a complex layout, kitchen-living room, two bathrooms.

TASK:

- Rational approach to the soundproofing issue.
- Not only meet regulatory requirements, but also create an increased level of comfort in recreation areas.



STAGE 1

FLOOR SOUNDPROOFING

First of all, we soundproof the floor throughout the apartment. We recommend to arrange a floating floor screed, this way we get rid of the rigid connections between the floor and the walls, and sound transmission will be significantly reduced.

WC, BATHROOM, LAUNDRY

RECOMMENDED CONSTRUCTION:

Water-soundproofing floor with the use of Shumanet-100Hydro

We solve two problems at once: hydro- and soundproofing of the room. The material is laid on a previously leveled base under the screed.

HABITABLE ROOMS

RECOMMENDED CONSTRUCTION:

Soundproofing floor with the use of Shumoplast

This is leveling multifunctional floating floor with a high level of impact and airborne noise soundproofing. Shumoplast make soundproofing and level the floors.



- Shumoplast
- Shumanet-100Hydro



STAGE 2

SOUNDPROOFING OF THE CEILING

In this option, we will mount constructions with maximum efficiency only in the rooms with increased requirements for soundproofing (bedroom, children's room); for common and walk-through areas we will apply solutions that improve acoustic comfort.

BEDROOM, CHILDREN'S ROOM

RECOMMENDED CONSTRUCTION:

Frame soundproofing ceiling on ULTRAKUSTIK hang (130 mm)

With a relatively small thickness, the construction will effectively solve the problem of protection against various noise - crying children, speech, barking dogs, TV, radio.

COMMON ZONES

RECOMMENDED CONSTRUCTION:

Stretch ceiling filled with Shumanet-Thermo ECO sound-absorbing mats

Shumanet-Thermo ECO material is laid in the inter-ceiling space between the sub ceiling and stretch ceilings. Reduces the loudness of the room, removes the "drum effect" of the stretch ceiling.



Frame soundproofing ceiling on ULTRAKUSTIK hang (130 mm)

Stretch ceiling filled with Shumanet-Thermo ECO sound-absorbing mats



STAGE 3

WALL SOUNDPROOFING

We soundproof only walls adjacent to the neighbors (especially important for walls made of gas blocks, foam blocks, foam concrete and similar materials).

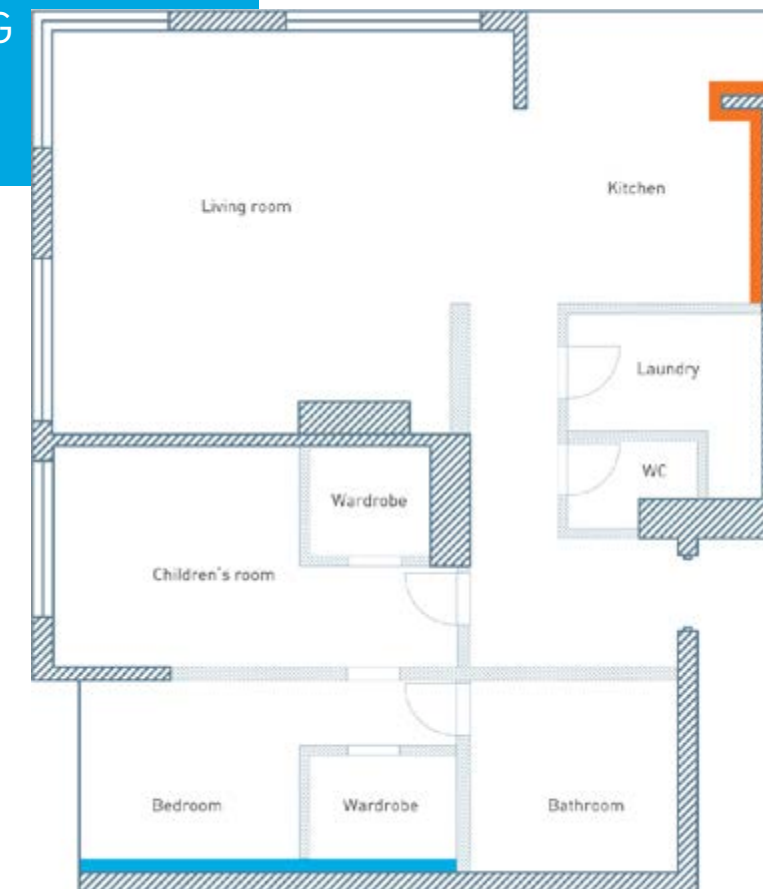
RECOMMENDED CONSTRUCTION:

Soundproofing framed cladding using ULTRAKUSTIK (90 mm)

Standard cladding on vibroinsulating hangs provides high soundproofing properties, protects against airborne and impact noise.

Soundproofing frameless cladding ZIPS-III-Ultra/ZIPS-Z4

The most effective ratio of thickness and result allows to save room space without compromising soundproofing.



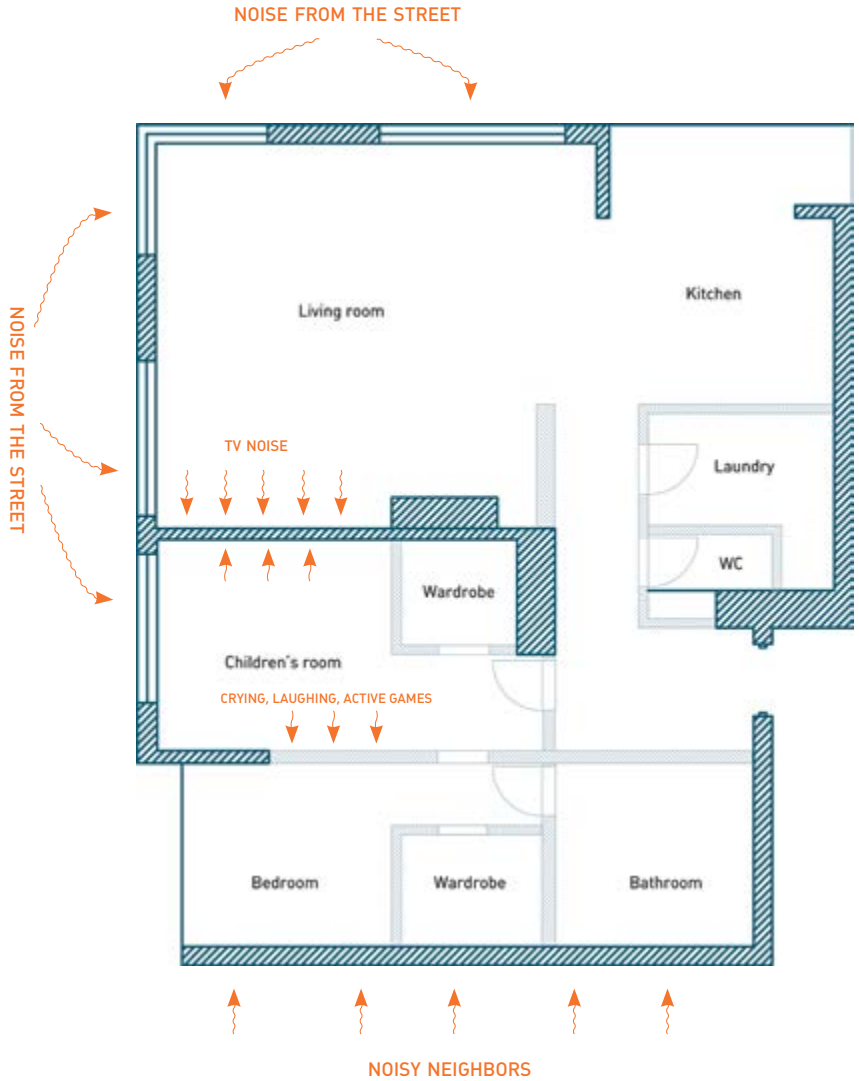
OPTION: «BUSINESS»

GIVEN:

Three-room apartment with a complex layout, kitchen-living room, two bathrooms.

TASK:

- Maximum soundproofing of all rooms.
- Pay special attention to the bedroom and the children's room - habitable areas for relaxation or concentrated work.



STAGE 1

FLOOR SOUNDPROOFING

WC, BATHROOM, LAUNDRY

RECOMMENDED CONSTRUCTION:

Water-soundproofing floor with the use of Shumanet-100Hydro

Shumanet-100Hydro is a roll material that solves two problems at once: hydro- and soundproofing. It is laid on a leveled base under the screed. The base needs to be leveled first.

HABITABLE ROOMS

RECOMMENDED CONSTRUCTION:

Soundproofing floor with the use of Shumoplast

This is leveling multifunctional floating floor with a high level of impact and airborne noise soundproofing. Shumoplast make soundproofing and level the floors.



- Shumanet-100Hydro
- Shumoplast



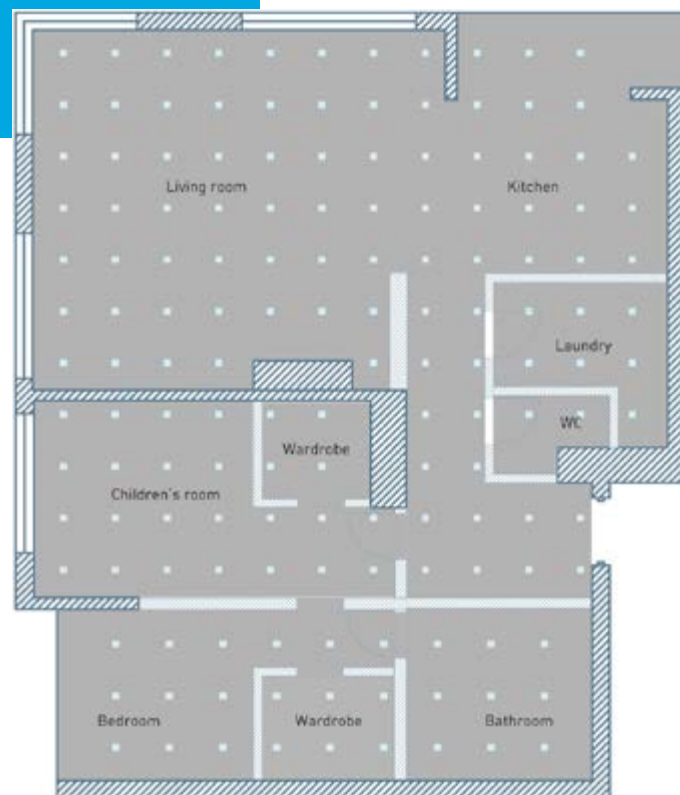
STAGE 2

SOUNDPROOFING OF THE CEILING

RECOMMENDED CONSTRUCTION:

Frame soundproofing ceiling on ULTRAKUSTIK hangs (130 mm) throughout the apartment.

- 1 This is a technological solution, since the use of a soundproofing frame construction allows wiring communications along the ceiling (wiring is hidden in the intra-frame space).
- 2 Preliminary ceiling leveling is not required.
- 3 Installation of built-in elements, such as lamps, is possible without loss of soundproofing (using an additional design).



■ Frame soundproofing ceiling on ULTRAKUSTIK hangs (130 mm)



STAGE 3

SOUNDPROOFING OF WALLS AND CONSTRUCTION OF PARTITIONS

RECOMMENDED CONSTRUCTION:

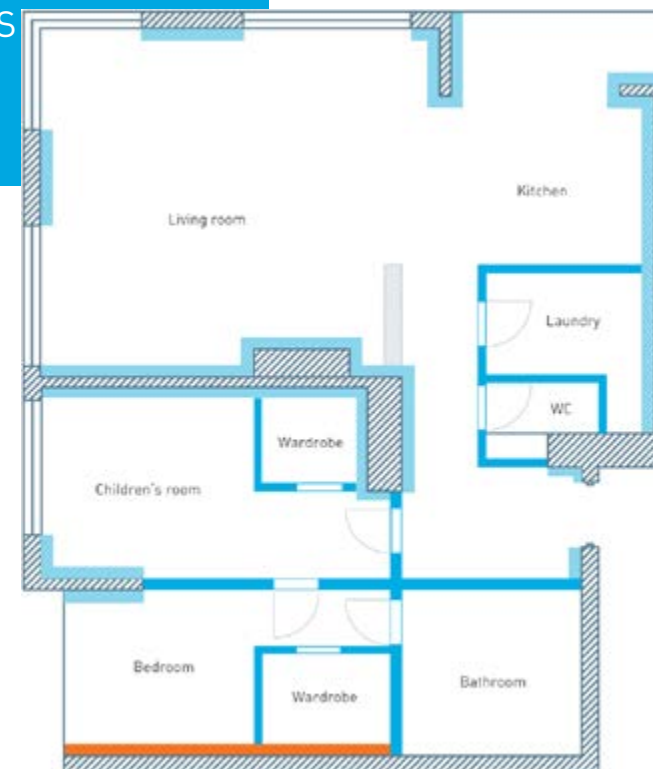
■ Soundproofing frameless cladding ZIPS-Z4/ZIPS-III-Ultra

■ Soundproofing independent framed cladding (90 mm)

Cladding with maximum soundproofing characteristics, allows to avoid walls leveling.

■ Soundproofing frame partition on a single 2x50 mm frame

The partition provides high levels of soundproofing* between noisy rooms and at the same time withstands heavy loads.



* Inter-room soundproofing through partitions with a doorway is limited to the door as the weakest point of soundproofing.

If it is necessary to achieve the maximum effect of soundproofing between rooms, it is recommended to use soundproofing doors with the following characteristics:

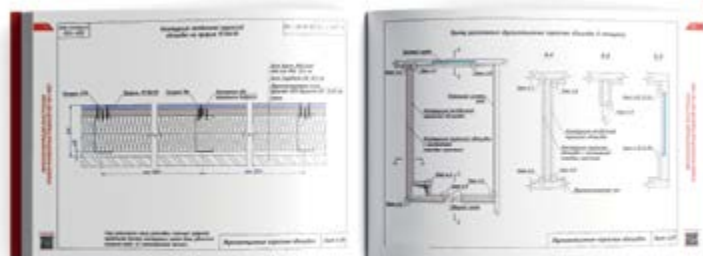
- Airborne noise insulation index not less than 40 dB,
- Presence of a stationary threshold,
- Presence of double/triple sealing circuit,
- Massive slab at least 70 kg.

ADDITIONALLY

Detailed installation diagrams and drawings of all structures listed in the catalogue can be found in the Engineering Solutions Album.

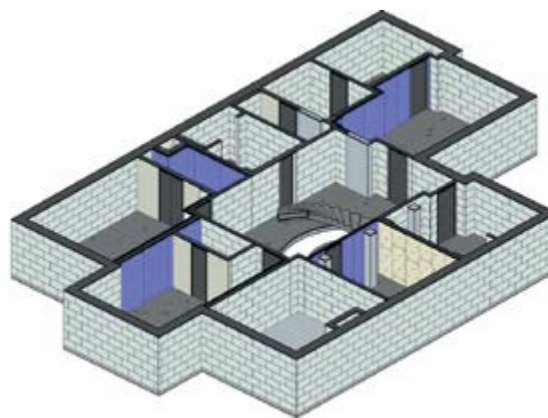


Download
Engineering Solutions
Album



BIM

A basic set of engineering constructions for floor, ceiling and wall soundproofing is also available in BIM format.



RUSSIA

📍 Novokuznetskayz st., 33/2, of.21 Moscow
📞 +7 (495) 134-98-98
✉ sales@acoustic.ru

BELARUS

📍 Gintovta st. 1, of.205, Minsk
📞 +375 (17) 265-61-89
✉ minsk@acoustic.ru

SERBIA

📍 Bore Stankovića Makiš, Belgrade
📞 +381 (11) 425 1059
✉ sales@Acoustic Group.org

KAZAHSTAN

📍 Zhandosova st. 98, Business office «Navoi» of.707, Almaty
📞 +7 (717) 269-61-60
✉ almaty@acoustic.ru

AUSTRIA

📍 Trautenauplatz 13, A-1190 Wien
📞 +4313202657
✉ sales@Acoustic Group.org



WWW.ACOUSTIC-GROUP.COM

CATALOGUE OF TYPICAL ROOM SOUNDPROOFING SOLUTIONS **ACOUSTIC GROUP**